

Hautapu Structure Plan: Update Newsletter 3

Background

In November 2003, Waipa District Council completed the Waipa Urban Growth Strategy. The Strategy identified an area at Hautapu as being potentially suitable for industrial development.

An open day was held in August 2005, to discuss the project with the public and to gather feedback to assist in identifying the opportunities and constraints of the site.

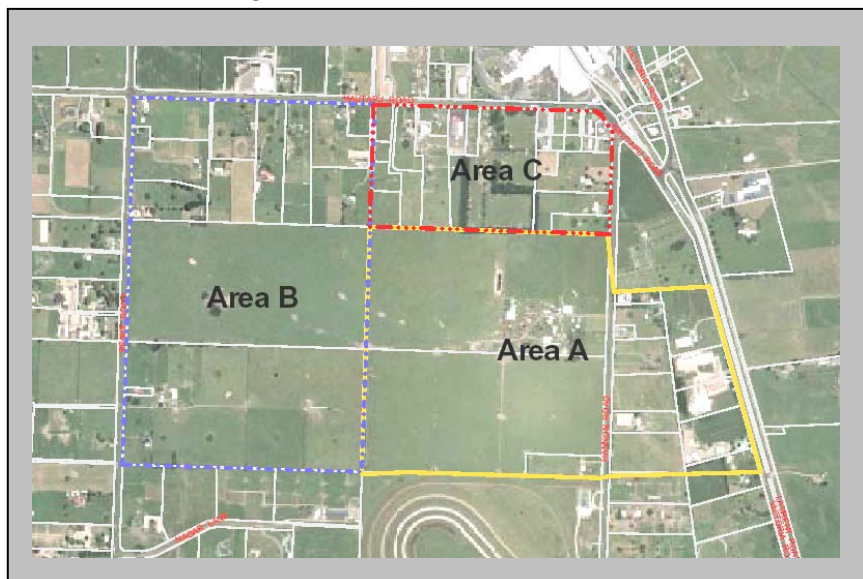
In November 2005, Council's Policy Committee resolved to extend the study area to incorporate an additional area of land to the west (Peake Road) and north (Hautapu Road). The plan below outlines the original and extended study

areas, with Area A being the original study area, and Areas B & C, the additional land. Area C is the existing Industrial Zone around the Hautapu Dairy Factory.

Completion of the Opportunities and Constraints Report in January 2006 determined that there were no major obstacles prohibiting development of the area. The report identified the objective of creating an industrial area that reflects the character of Cambridge.

Over the past six months, investigations have been undertaken to prepare a draft Structure Plan. This draft plan, its associated reports and recommendations for future stages of work, have been approved by Council's Policy Committee as a basis for further public consultation.

Figure 1: Study Area Boundaries



Open Day

A public open day is proposed to be held on Thursday November 9 2006, running from 3pm until 7pm at the Hautapu Hall on Hautapu Road, Cambridge. The purpose of the open day is to present the draft Structure Plan to the community and obtain feedback to base the next phase of works on. These works will include finalisation of the

Structure Plan and preparation of the formal Plan Change documents for public notification.

Key Contacts

If you require any further information please do not hesitate to contact either Wayne Allan (Waipa District Council) on 07 872 0031 or Richard Douch (Beca) on 07 838 1262.

