

REDUCE YOUR WATER USE... RETROFIT!

Smart Water Starts with You! aims to make long-term change to how we use water and is a joint venture between Hamilton City Council, Waikato District Council and Waipa District Council.



WWW.SMARTWATER.ORG.NZ

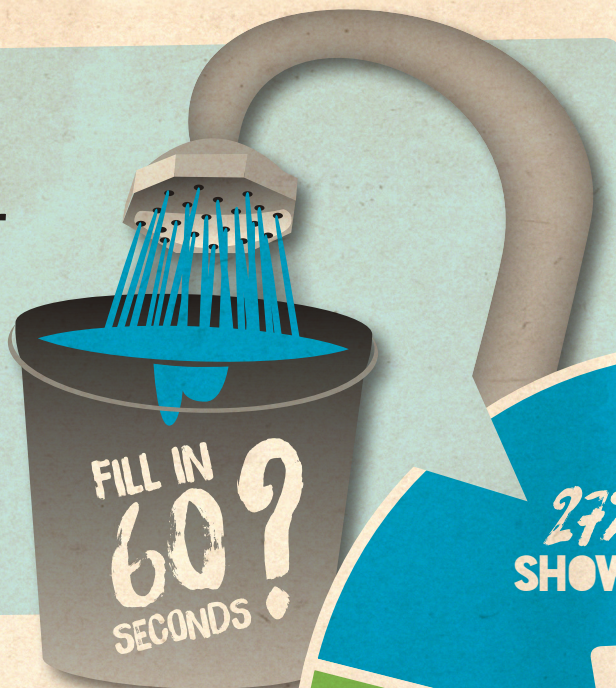
**SMART WATER
STARTS WITH YOU!**

RETROFIT YOUR SHOWER.

If your shower can fill a bucket in 60 seconds it is using more water than you need for a great shower.

Think about installing a low-flow shower head or a flow restrictor.

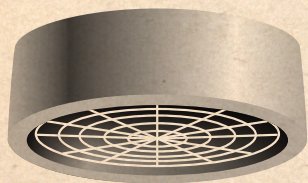
Get yours from a plumbing store – make sure you match it with your home's water pressure (check your cylinder or ask a plumber).



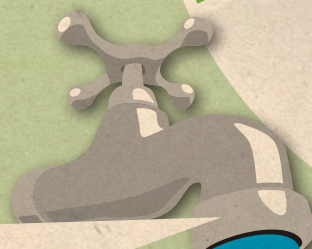
RETROFIT YOUR TAP.

If you have a mains pressure system you can add a tap aerator to limit your water flow while still getting good pressure. Aerators are great for hand basins and sinks that you don't often fill with water.

Get yours from a plumbing store – make sure you match it with your home's water pressure (check your cylinder or ask a plumber).



AN AERATOR IS A SMALL DISK THAT ALLOWS AIR TO MIX WITH THE WATER.



20%
OTHER

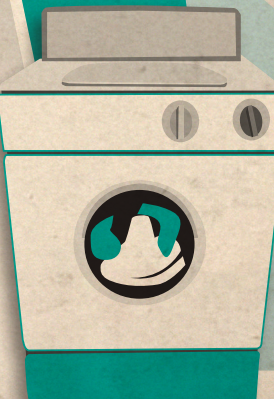
13%
TAPS

27%
SHOWER

18%
TOILET

22%
WASHING
MACHINE

THE BIG
FOUR
WATER USERS
IN YOUR HOME

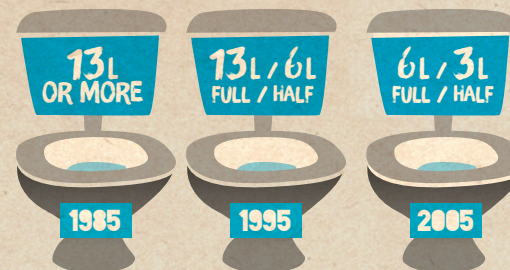


SMART WATER WASHING MACHINE USE.

Behaviour is the best retrofit option for saving water with your washing machine.

- Wait until you have a full load before washing.
- Use the eco cycle on your machine if it has one.
- Select a low water level for smaller washes.

These actions will save water and electricity.



LITRES PER FLUSH ESTIMATES BASED ON THE AGE OF YOUR TOILET

RETROFIT YOUR TOILET.

Modern toilets are more efficient than older toilets. Ceramic cisterns often have a date stamped on the inside of the back wall.

If you have an older toilet (pre 2005) you can install a weighted flush limiter ("Gizmo"), giving you control of how much water is used each flush.

Available FREE from your local council office. While stocks last.



Stand a plastic soft drink bottle in your cistern to save water every time you flush.

Install a ballcock that allows adjustment of the litres used per flush. A ballcock is a mechanism in the cistern made up of a valve and floating ball.

Available from your local plumbing store.