



**EXTRAORDINARY MEETING**

**Time:** 4.00pm  
**Date:** Wednesday 24 June 2020  
**Meeting:** Cambridge Committee Room  
Cambridge Service Centre  
23 Wilson Street  
Cambridge

| INDEX  |
|--|
| Agenda – 24 June2020   |
| Confirmation of Minutes of the Previous Meeting – 19 February 2020 |
| Maungatautari Ecological Island Trust Operational Report           |
| Maungatautari Reserve Management Plan Review Update                |
| Landowner Agreement Update   |
| Hicks Road Update  |

# MAUNGATAUTARI RESERVE COMMITTEE AGENDA



## AGENDA ITEMS

### 1 MEMBERS

---

#### **Chairperson**

Councillor Andree-Wiltens

#### **Members**

His Worship the Mayor JB Mylchreest,

Cr PTJ Coles

Cr RDB Gordon

Cr GRP Webber

Phil Lyons (CE Maungatautari Ecological Island Trust)

T Tauroa (Ngāti Koroki Kahukura – Pohara Marae and landowner representative)

P Davies (Ngāti Koroki Kahukura – MEIT and Maungatautari Marae)

A MacPherson (Waikato Regional Council)

Ray Scrimgeour (Department of Conservation)

Geoff Canham (Consultant)

Parawera Marae – representative to be appointed

Adjoining landowners – two representatives to be appointed

### 2 APOLOGIES

---

### 3 DISCLOSURE OF MEMBERS' INTERESTS

---

Members are reminded to declare and stand aside from decision making when a conflict arises between their role as an elected member and any private or other external interest they may have.



#### 4 LATE ITEMS

---

Items not on the agenda for the meeting require a resolution under section 46A of the Local Government Official Information and Meetings Act 1987 stating the reasons why the item was not on the agenda and why it cannot be dealt with at a subsequent meeting on the basis of a full agenda item. It is important to note that late items can only be dealt with when special circumstances exist and not as a means of avoiding or frustrating the requirements in the Act relating to notice, agendas, agenda format and content.

#### 5 CONFIRMATION OF ORDER OF MEETING

---

**Recommendation**

*That the order of the meeting be confirmed.*

# MAUNGATAUTARI RESERVE COMMITTEE REPORT



**To:** The Chairperson and Members of the Maungatautari Reserve Committee  
**From:** Governance  
**Subject:** **CONFIRMATION OF MINUTES**  
**Meeting Date:** 24 June 2020

---

## **1 EXECUTIVE SUMMARY**

---

To confirm the minutes of the Maungatautari Reserve Committee meeting held on 19 February 2020.

## **2 RECOMMENDATION**

---

*That the open minutes of the Maungatautari Reserve Committee meeting held on 19 February 2020, having been circulated, be taken as read and confirmed as a true and correct record of that meeting.*

## **3 ATTACHMENTS**

---

Maungatautari Reserve Committee Minutes – 19 February 2020

# MAUNGATAUTARI RESERVE COMMITTEE MINUTES



**Time:** 4:00pm  
**Date:** Wednesday 19 February 2020  
**Venue:** Committee Room, Waipa District Council, 23 Wilson Street, Cambridge

*Opening Karakia – Poto Davies*

## 1 MEMBERS

---

### **Chairperson**

Councillor Andree-Wiltens

### **Members**

His Worship the Mayor J Mylchreest

Cr PTJ Coles

Cr RDB Gordon

T Tauroa (Ngāti Koroki Kahukura (Pohara Marae and landowner) representative)  
[from 4.08pm]

P Davies (Ngāti Koroki Kahukura (MEIT and Maungatautari Marae)

Phil Lyons (CE Maungatautari Ecological Island Trust)

Geoff Canham (Consultant)

Andrew MacPherson (Waikato Regional Council) [from 4.12pm]

## 2 APOLOGIES

---

### **RESOLVED**

10/20/01

*That the apologies from Councillor Webber and Ray Scrimgeour for non-attendance and lateness from Ted Tauroa and Andrew MacPherson be received.*

Mayor Mylchreest/ Member Davies

## 3 DISCLOSURE OF MEMBERS' INTERESTS

---

Members are reminded to declare and stand aside from decision making when a conflict arises between their role as an elected member and any private or other external interest they may have.

There were no new disclosures.



#### 4 MINUTES OF PREVIOUS MEETING

---

The last meeting of the Maungatautari Reserve Committee before the Triennial Election meeting was held on 21 August 2019. The Chairperson and the Chief Executive were responsible for the correctness of the Minutes of the last meeting before a triennial election.

#### 5 LATE ITEMS

---

Items not on the agenda for the meeting require a resolution under section 46A of the Local Government Official Information and Meetings Act 1987 stating the reasons why the item was not on the agenda and why it cannot be dealt with at a subsequent meeting on the basis of a full agenda item. It is important to note that late items can only be dealt with when special circumstances exist and not as a means of avoiding or frustrating the requirements in the Act relating to notice, agendas, agenda format and content.

There were no late items.

#### 6 CONFIRMATION OF ORDER OF MEETING

---

**RESOLVED**

10/20/02

*That the order of the meeting be confirmed.*

Mayor Mylchreest/ Cr Coles

#### 7 MEETING SCHEDULE FOR 2020

---

No Papers

The Local Government Act 2002 requires Council and its committees to set the dates of meetings, or a schedule of meetings, for a period.

**RESOLVED**

10/20/03

*That in accordance with the Local Government Act 2002, Schedule 7 Clause 19(6)(a)(b), the Maungatautari Reserve Committee adopt the following schedule of meeting dates for 2020 (generally being the third Wednesday of every third month except January):*

*19 February; 20 May; 19 August; 18 November.*

Cr Coles/ Cr Gordon



## 8 MAUNGATAUTARI ECOLOGICAL ISLAND TRUST, SANCTUARY MANAGER'S REPORT

---

Chief Executive Maungatautari Ecological Island Trust Phil Lyons presented his report.

There were three pest incursions during the period July 2019 to January 2020. There were thirteen fence breaches during the same period. Several of these breaches were due to falling trees during storms over the winter period.

Mr Lyons advised that the MEIT Restoration Plan was adopted by the MEIT Board on 12 August 2019. The full Restoration 10-year plan has now been completed and will be implemented 1 July 2020.

Highlights included the increase in visitor numbers with January 2020 being a record month. Mr Lyons advised of a new venture encouraging retirement village residents to visit the Maunga with tours suitable for those with limited mobility. The Trust have also partnered with Mother Earth bars to receive a donation from every bar sold.

### RESOLVED

10/20/04

*That the report of the Maungatautari Ecological Island Trust be received.*

Chairperson Andree-Wiltens/ Mayor Mylchreest

## 9 MAUNGATAUTARI RESERVE COMMITTEE MEMBERSHIP

---

At the Council meeting held on 18 November 2019, it was resolved that the Maungatautari Reserve Committee would have the following membership and purpose:

**Membership:** Mayor Mylchreest, Councillor Andree – Wiltens, Councillor Coles, Councillor Gordon, Councillor Webber, Ted Tauroa (Pohara Marae), Poto Davies (Maungatautari Marae/MEIT), Fred Haimona (Ngati Haua), Geoff Canham (Consultant), one representative from the Maungatautari Ecological Island Trust, one representative from the Department of Conservation and one representative from the Waikato Regional Council.

[Landowners to be appointed once available]

**Chair:** Councillor Andree-Wiltens



**Purpose:** To facilitate Council's role in relation to the administration and management, including co-governance and management of the Maungatautari Reserve in accordance with the requirements of the Reserves Act 1977, reserve management issues as they relate to the reserve and to the ecological island project, and to oversee the services of MEIT for day-to-day management of the enclosures and to oversee the Reserve Management Plan for the reserve.

It is now appropriate for the Committee at the first meeting to discuss the Membership of the Committee regarding outstanding appointments.

A person who is not an elected member can be appointed to a Committee when the person has the skills, attributes or knowledge to assist the work of the Committee.

The Committee can make recommendations on the appointment of Committee Members to Council.

A letter was received on 19 February 2020 advising of the resignation of Fred Haimona as the Ngāti Hauā representative on the Maungatautari Reserve Committee.

An email was also received on 5 February 2020 advising of the resignation of Tu Clarke as a representative for Ngāti Korokī-Kahukura – Maungatautari Marae on the Maungatautari Reserve Committee.

**RESOLVED**

10/20/05

*That the Maungatautari Reserve Committee accept the resignations of Fred Haimona – Ngāti Hauā and Tu Clarke - Ngāti Korokī-Kahukura - Maungatautari Marae.*

Mayor Mylchreest/ Cr Coles

**RESOLVED**

10/20/06

*That Andrew MacPherson (Waikato Regional Council), Ray Scrimgeour (Department of Conservation) and Phil Lyons (Maungatautari Ecological Island Trust) be recommended as Members of the Maungatautari Reserve Committee.*

Member Davies/ Mayor Mylchreest





## 10 HICKS ROAD UPDATE

---

Manager Property Services John Miles, provided a verbal update on Hicks Road access and related property negotiations.

Mr Miles advised vehicle access for MEIT staff and emergency services only would be from Tane Road through the Dallinger property. There would be no vehicle access through Hicks Road, only pedestrian access. Negotiations to open the northern enclosure access is still ongoing.

Mr Miles advised that there is a meeting scheduled for Monday 24 February 2020 with the Landowners to discuss granting easements through the Maori Land courts.

### **RESOLVED**

10/20/07

*That the information from Manager Property Services John Miles be received.*

Cr Coles/ Mayor Mylchreest

## 11 LANDOWNER AGREEMENT UPDATE

---

Manager Community Services Sally Sheedy provided an update on the Landowner agreement process currently being undertaken by Greg Martin.

Ms Sheedy advised that eleven negotiations had been concluded, four were still underway with five still to commence. There were fifteen Maori land agreements which had not yet begun.

Ms Sheedy advised that she would be developing a business case for the Long Term Plan to complete the outstanding cases. It was noted that showing a map of the affected properties at a subsequent meeting would be helpful for new members.

Ms Sheedy commended the work that Greg Martin had undertaken to date. It was stressed the importance of maintaining access to the perimeter fence.

Mr Lyons commented that MEIT has had good support from the adjoining landowners and they have been able to carry out day to day maintenance.



Mayor Mylchreest provided the Committee with a detailed account of how the Trust was formed. Mayor Mylchreest emphasised that the project has been reliant on a lot of goodwill by landowners and it was important not to pressure resistant landowners.

**RESOLVED**

10/20/08

*That the information from Manager Community Services Sally Sheedy be received.*

Member Canham/ Cr Coles

## **12 MAUNGATAUTARI MANAGEMENT PLAN REVIEW**

The purpose of the report by Emily Auton – Reserve Planner Beca was to obtain the Maungatautari Reserve Committee’s support for the Draft Maungatautari Reserve Management Plan (RMP) which would be presented to Council for approval to seek community feedback. The community would have the opportunity to present their submissions to a hearings panel.

The RMP has been under review since 2016, in accordance with both the Reserves Act 1977 and the Ngaati Koroki Kahukura Claims Settlement Act 2014 (NKKCSA).

An update on the RMP was last presented to the Maungatautari Reserve Committee on 21 August 2019 which outlined: the process to date; an overview of submissions received in the first round of consultation with the public; gave an overview of the look and feel of the draft Reserve Management Plan, and the key policy direction in the draft RMP.

The report set out:

- consultation undertaken since the last Committee meeting in August 2019;
- the draft RMP for your consideration;
- an overview of the next steps; and
- request for your support of the draft RMP which will be presented to Council for approval to go to public notification.

Discussion was held around the inability for MEIT to charge for access to the reserve. Ms Auton advised that any charging has to be in accordance with the Reserves Act 1977. Any charging for ‘valued added’ experiences would need to be addressed through a concession.



While Waipa District Council and Waikato Regional Council contribute financially towards the running of the Maunga, the Trust relies on obtaining funding from other sources to operate. Mr Lyons advised that the financials for MEIT are freely available for the public to view.

Suggestions were made for the opportunity to apply for funding through the IVL – International Visitor Levy. Mr Canham advised that the fund is shared equally between MBIE and DOC. The IVL investment priorities are split between conservation and tourism.

Community Services Manager Sally Sheedy outlined the key statutory and planning documents that influence and are influenced by the RMP.

**RESOLVED**

10/20/09

That

- a) *The report of Emily Auton, Consultant Planner (Beca) titled Maungatautari Reserve Management Plan review update (document number 10361266) be received;*
- b) *The Maungatautari Reserve Committee endorses the Draft Maungatautari Reserve Management Plan attached in Appendix 1 of this report, which will be presented to Council for approval for community consultation.*

Member Canham/Mayor Mylchreest

**13 NEXT MEETING**

The next meeting will be held on Wednesday 20 May 2020.

*Closing Karakia – Ted Tauroa*

There being no further business the meeting closed at 5.30pm.

**CONFIRMED AS A TRUE AND CORRECT RECORD**

**CHAIRPERSON:** .....

**DATE:** .....

# Operational Report Maungatautari Reserve Committee Meeting June 2020



## 1. Operational update

### Incursions and Breaches

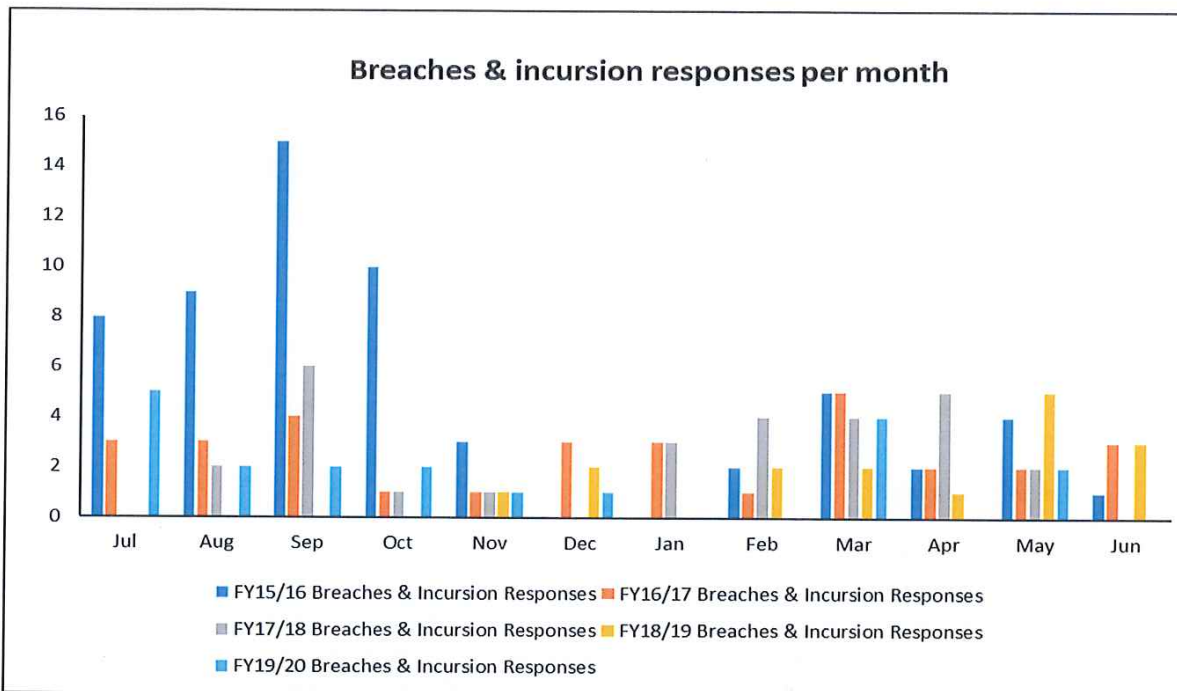
There has been a total of 12 pest incursions in the 2019-2020 financial year. In July 2019, a mouse was trapped in the Tautari Wetland, and, beginning in late February 2020 mouse tracking has occurred across the Northern and Southern enclosures, QE2 Block, and Tautari Wetland. Mouse incursion responses continue across all these enclosures except the Tautari Wetland which is once again mouse free.

Four weasels have been trapped on the maunga in the 2019-2020 financial year. On July 15<sup>th</sup> and August 30<sup>th</sup>, 2019 weasels were found in DOC traps at Rahiri 14 and Te Akatarere 24, respectively. On May 14<sup>th</sup> and May 20<sup>th</sup>, 2020 weasels were found in DOC traps at Quad 54 and Brooks 12, respectively. The natural heritage team incursion response to weasels is to set up and monitor tracking cards within a 2km radius of the capture. Additional DOC 200 and 250 traps are set up and traps are rebaited with rabbit meat in the same radius. No additional weasel tracking or captures occurred in the 2019 incursion response period and monitoring of the 2020 incursion response is ongoing.

With the assistance of Waikato Regional Council staff, samples were taken from all weasels captured and supplied to Eco Gene to undergo relatedness analysis. The conclusion of analysis conducted in 2019 was that there was insufficient evidence to indicate whether there is a breeding population of weasels on the maunga. Analysis conducted in 2020 is currently under review with results expected soon.

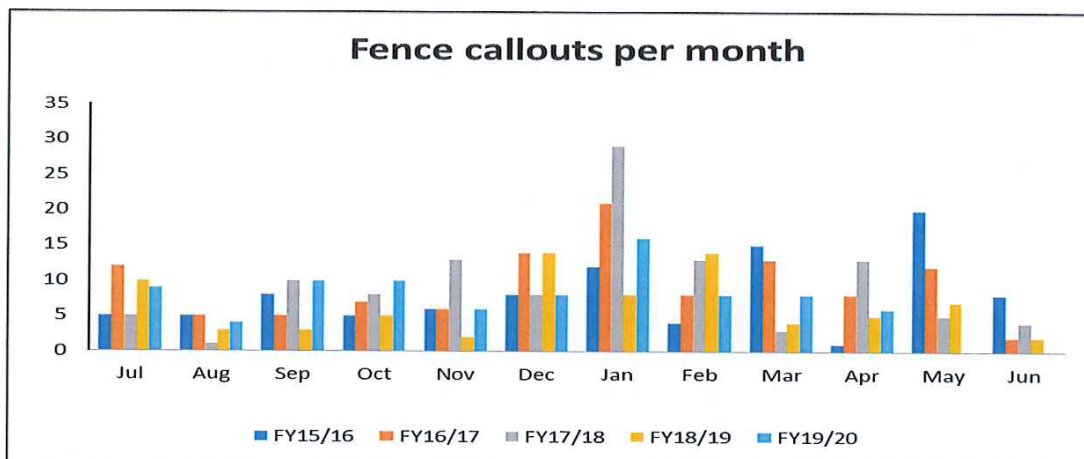
Following the 2019 weasel captures, three mustelid detection dogs and their handlers were brought to the maunga. One dog, Maia, indicated for mustelids on the quad track, and her handler Greg reported a chance that another mustelid was present on the mountain. Two other dogs and their handlers, Miriam Ritchie, and Richard Johnson reported no mustelid detections during their period of work.

Four rat incursions occurred in the 2019-2020 financial year. Rat tracking occurred in the QE2 block in April 2020 and a ship rat tracked at Waterfall 23 in May 2020. Two Norway rats were trapped in the Gorsenet area, Fence 244a and 251a, in May. Rat incursion responses for all these incursions are ongoing. In June 2020 rodent dog handler Hannah Johnston, from the Department of Conservation, was brought in to carry out surveys in the Waterfall track and Gorsenet areas. Hannah's dog Indie detected no rats.



#### Fence management

There were 13 fence breaches in the July 2019 to May 2020 period. Breaches of significance include, hood damage twice in one night during a storm on July 4<sup>th</sup> at posts 355 & 364. The hood was damaged at post 320 on July 12<sup>th</sup>. The hood was damaged by a falling Tawa at post 221 on July 18<sup>th</sup>. A Rewarewa tree breached the fence at post 136a on August 28<sup>th</sup> and a Tawa breached the fence at Post 331a on September 9<sup>th</sup>. A culvert was found jammed open at 343a on September 11<sup>th</sup> and similarly a culvert was found open at 267a on September 25<sup>th</sup>. A fence breach occurred at the back of the Northern enclosure (North Cell 15) on October 14<sup>th</sup> and a Pukatea tree breached the fence at 209a on October 22<sup>nd</sup>. To date no significant fence breaches have occurred in 2020.



## Species Update

### Takahe

All nine takahe are doing well, with the additional grass growth of Autumn boosting feed quality. Over the lockdown, the takahe continued to be fed and checked twice weekly by operations staff. All chicks are now self-feeding from the hoppers which is a milestone. The vaccination schedule was interrupted by lockdown, so will start again in early June with two vaccinations, three weeks apart. The schedule for departure of this season's chicks is likely in August, with the possibility of adult pair exchanges to higher value genetic pairs also being discussed with the takahe recovery group.

### Wetland Restoration

A visit from PGG Wrightsons to assess the grass and donation of a small amount of grass seed has helped with options to increase feed quality in the Wetland. This was completed in May, with spreading of some clover and Lucerne seed at the end of the grass sowing season. Some great advice was received that will help to create a pasture management plan to sit alongside the Wetland restoration plan. The spraying in the lower stream area (previously overrun with gypsy wort and couch grass) prior to lockdown has been effective and now requires planting, with plants on standby in the nursery.

### Kiwi

The kohanga project has seen 4 more kiwi chicks released to the main mountain in May. We also had Kiwi conservation dogs with handlers Tash Coad and James Fraser for 3 days in the Southern Enclosure and wetland at the end of May. They found 5 kiwi including 4 unknowns and 1 known male (Pipiriki) that was a founding bird from Waimarino. They were all released to the main mountain, bringing our total known count to 197 kiwi.

### Hihi

A male hihi was found dead on a track by one of the conservation dog teams. He was a banded male and known to staff, this bird was frequently at Feeder 2 in the Southern Enclosure and when observed in late summer appeared to have some mild respiratory issues. The body was fresh and therefore sent for post-mortem examination at Massey Wildbase Pathology. Given the history of being a dominant and stressy bird with respiratory issues, the prime suspect is Aspergillosis which is an opportunistic pathogen and unlikely to be of threat to other birds. The hihi survey contractor will arrive in July of this year. The funding for her annual survey work for 3 years has been supplied by the Hihi Conservation Trust via a successful bid to the DOC Community Fund last year, with SMM and other hihi sanctuaries as recipients, which is a great saving for SMM.

### Insects

The giant stick insect *Argosarchus horridus*, one of 5 insects targeted for survey and possible translocation in the SMM Restoration Plan was found on the fenceline during tree trimming operations in May. Due to insect researcher Chrissie Paintings work on Giraffe weevils, this is also confirmed as present at Maungatautari. Recently, a person sent in photos of a *Peripatus* worm found at the maunga, meaning 3 of the 5 insects are confirmed as present at Maungatautari. We do not yet have further information on their distribution or abundance.

### Fungi

On discussions with fungal experts from Manaaki Whenua Landcare Research it has been ascertained the best way to monitor and record fungi at SMM is to utilise iNaturalist. This is because fungal experts frequent the site and are often able to identify many species from good photographs. This is also a great way for citizen science to be employed and engage visitors to explore the maunga and share photos on iNaturalist. Data from this site can be pulled into a global biodiversity database <https://www.gbif.org/> which also helps to implement the restoration plan goal of accessible data.

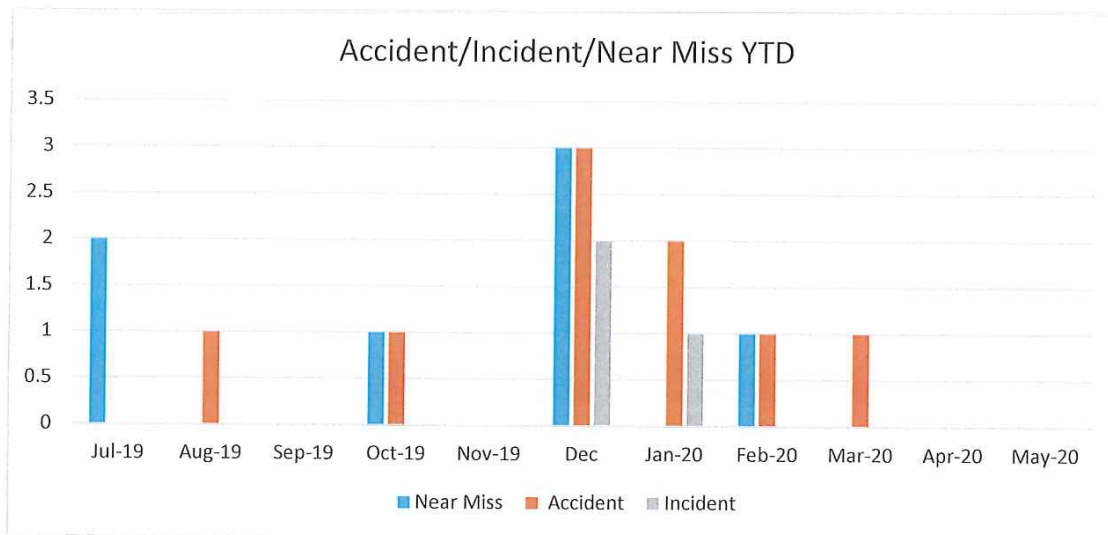
**Postponements**

Due to the Covid19 lockdown several survey and transfer projects have been put on hold. Rifleman translocation will now occur in April/ May 2021. Lizard survey set up in the Southern Enclosure will take place in Spring and the Tuatara survey will occur in late Spring/ early summer.

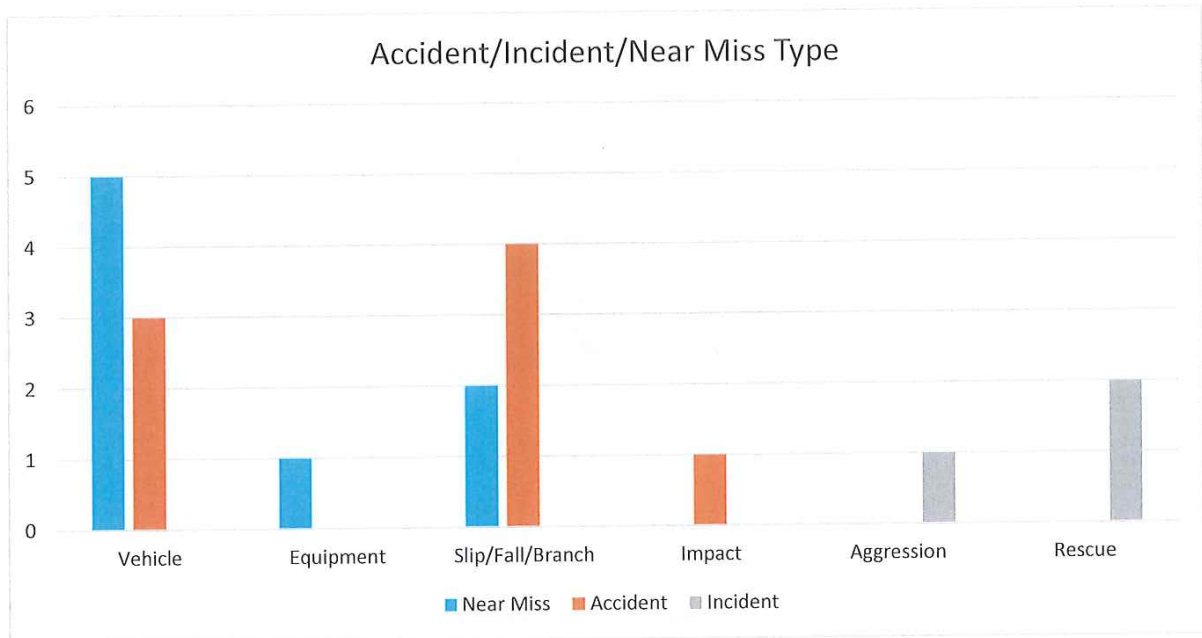
**Biosecurity Plan**

The next plan to be reviewed will be the 2015-2020 MEIT Biosecurity Plan. This process is being guided by the MEIT Scientific & Technical Advisory Panel. (STAP). A request for service has been sent to preferred contractors. The scope of review is detailed in appendix 1 of this report.

**2. Health and Safety**



One minor accident in the last quarter, (March to May) with a staff member slipping whilst crossing the fence to attend to an incursion response.



| Vehicle | Equipment | Slip/Fall/Branch | Impact | Aggression | Rescue | Total     |
|---------|-----------|------------------|--------|------------|--------|-----------|
| 5       | 1         | 2                |        |            |        | Near Miss |
| 3       |           | 4                | 1      |            |        | Accident  |
|         |           |                  |        | 1          | 2      | Incident  |
|         |           |                  |        |            |        |           |
| 8       | 1         | 6                | 1      | 1          | 2      | 19        |

Vehicle incidents represent the highest level of risk at present. 4WD Refresher course for volunteers and staff will be held on the 25<sup>th</sup> and 26<sup>th</sup> June.

### 3. Visitors

The SMM Visitor Centre closed on Sat 21<sup>st</sup> March and reopened Wed 20 May. Since re-opening, there were 289 visitors for the 10 days open in May, 60% were from the greater Waikato area, 11 overseas visitors (lockdown refugees). There were 147 visitors for the Saturday & Sunday of Queens Birthday weekend.

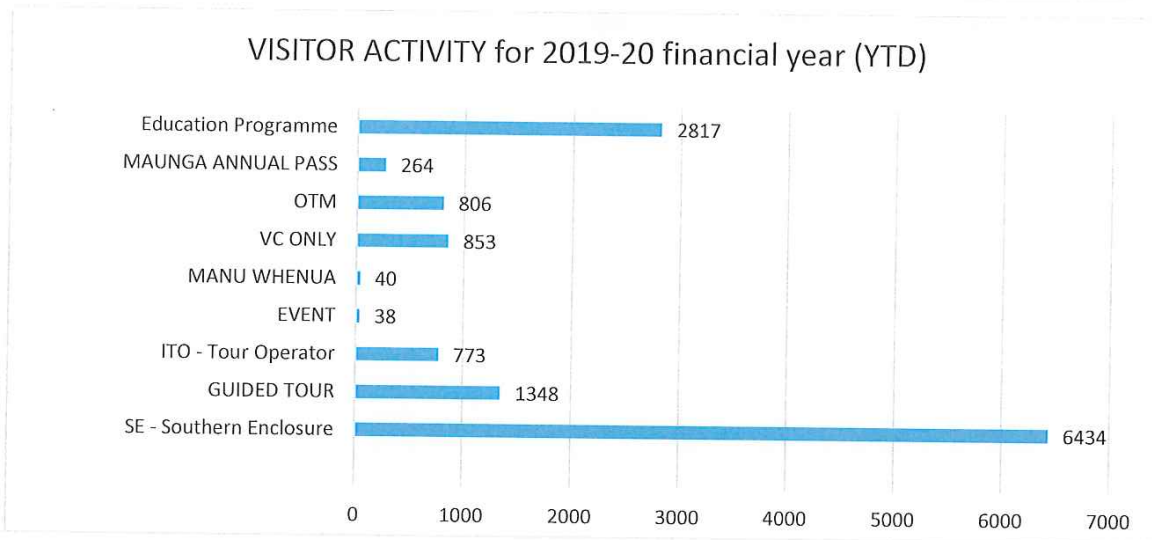
Guided tours recommenced 23<sup>rd</sup> May -weekends only, 22 people on tours over 4 days.

#### Covid impact:

A comparison with visitor numbers over the two previous years would suggest we lost approximately 3200 visitors due to Covid:

|        |  |               |
|--------|--|---------------|
| March: | 10 days closed, reduced overseas pre-lockdown: | 700 visitors  |
| April: | Full month, including Easter.                  | 1900 visitors |
| May:   | 19 days closed.                                | 600 visitors  |





**4. Capital Projects**

Funding has been secured for the Education Centre. Appendix 2.

The final piece of the funding jigsaw puzzle was put into place with a \$327,000 plus GST grant received in June from the lotteries Environment and Heritage fund. Overall project funding is as follows:

The total project costs is estimated at \$1,019,228

The project has been split into three components, Toilets, Carpark and Centre as follows:

| Components   | Description            | Total Cost<br>Ex GST | Project status    |
|--|------------------------|----------------------|-------------------|
| Support Infrastructure   | 5 x composting toilets | \$140,365            | Completed         |
| Community Education Centre Access.   | Centre Car Park        | \$215,000            | Completed         |
| Resource Consent   | Education Centre       | \$10,163             | Approved          |
| Landscape Impact Assessment  | Education Centre       | \$11,200             | Completed         |
| Traffic Impact Assessment  | Education Centre       | \$3,000              | Completed         |
| Community Education Centre Build Stage One (Quantity Survey report figure Duffield Murray Consultants) | Education Centre       | 639,500.00           | Funding in place. |
| Total Cost   |                        | \$1,019,228          |                   |

In addition to fit for purpose Community Education Centre, the overall success of the project relies upon the successful construction of suitable support and access facilities. Specifically, this includes adequate toilets and carparking. Toilet facilities have been designed, funded, and constructed. The carpark facility has been designed, consented, funded, and completed.

The project is funded as follows:

| Funding Source/purpose                        | Status                                    | \$ Ex GST                    |
|---|---|------------------------------|
| Trust Waikato/Education Centre                | Foundation partner/<br>Confirmed          | \$300,000                    |
| MBIE. Compost Toilets x 5                     |   | \$75,615                     |
| Waipa District Council<br>Compost Toilets x 5 | Received<br>Received                      | \$64,750                     |
| Other smaller community funders               | Received                                  | \$7699                       |
| Resource Consent and associated Reports.      | Paid/being paid through operating revenue | 24,363                       |
| Student supporters appeal                     | Received                                  | \$4290                       |
| MBIE-Facility Carpark                         | Approved: Tourism infrastructure form.    | \$190,000                    |
| Transpower-Facility Carpark                   | Approved March 2019/Received              | \$25,000                     |
| <b>Subtotal</b>                               | <b>Total Received/Confirmed</b>           | <b>\$691,717</b>             |
| Lotteries Community Facility fund             | Received June 2020.                       | <b>\$327,511</b>             |
| <b>Total</b>                                  |   | <b><u>\$1,019,228.00</u></b> |

## 5. Recommendations

That the Maungatautari Reserve Committee receives this report.

Phil Lyons  
CEO.

## Appendix 1



### Background

The Maungatautari Ecological Island Trust (MEIT, or the Trust) initiated development of an updated, comprehensive Biosecurity Plan in 2015 to help safeguard translocated indigenous species and protect the overall integrity of the Sanctuary against introduced invasive organisms. The Plan has a term of 2015 - 2020 and the Trust wishes to review the plan and update it for the next 5-year period, 2021 - 2026.

The key driver for a Biosecurity Plan is to provide assurance and integrity to the MEIT Restoration Plan. Maungatautari is unique to New Zealand, offering a large, forested, pest-fenced, 'mainland island' sanctuary for many of New Zealand's threatened and vulnerable species (including birds, reptiles, invertebrates and fish) and is managed by a community trust. Iconic species flourish behind a 47kilometre pest-proof fence which excludes all mammalian pests, except mice. However, a variety of ongoing threats to the fence provide opportunities for pests to invade and spread.

The Plan presents an initial five-year Biosecurity Plan with three overall objectives - prevention, detection and response. By necessity it focuses on the highest risk threats to the project. For the Plan to be effective the Trust, staff and volunteers and funding partners (DOC, Waipa District Council and Waikato Regional Council) will need to be actively engaged with each other to implement proposed measures and to change some current practices.

The current Plan is pathway-based. A pathways approach aims to reduce the risks from a range of potential invasive species and modes of access ~~into or~~ onto Maungatautari. The focus is on reducing risks from activities such as: the nursery operation, fence maintenance and inspection work, operating vehicles across the pest proof fence and the threat of invasive pest plants invading from neighbouring land. The success of Sanctuary Mountain Maungatautari has seen visitor numbers grow, which in turn has created greater expectations and a different set of potential pest pathways.

Purpose and outcomes sought from this project

The review project was instigated by Phil Lyons, CEO of MEIT. The scope concerns a review of the current Plan, identification and risk analysis of pathways both present and potential, consultation with all stakeholders, assessment of current best practise and emerging technologies for improved biosecurity, and preparation of a draft Biosecurity Plan and accompanying Operational plan incorporating prioritised recommendations appropriate for operational delivery from 2021 to 2026.

The outcome sought from this project is an up to date Biosecurity Plan and supporting Operational plan fit for purpose, with prioritised recommendations for the Trust to implement.

**1.1 Review of existing Biosecurity procedures and identification of key issues:**

What is in scope.

1. Perusal of the MEIT Restoration Plan to familiarise key objectives and risk factors.
2. Identification of risk factors outside the 2015-2020 Biosecurity plan that are newly developed, such as myrtle rust, *M. Bovis* and woolly nightshade.
3. Provision of scientifically supported recommendations on how mice are to be managed.
4. Revision of the recommended actions from the current MEIT Biosecurity Plan (2015-2020), including principles, policies and recommended actions. Are they still relevant? What has the MEIT response been? What are the outcomes of those actions? How do they compare to current best practise industry standards?
5. Review of current operating biosecurity practices. What is the capability of current systems to monitor, record and manage all biosecurity risks? Are there ongoing improvement/learning processes in place? How do current practices compare to best practise industry standards?"
6. Identification of current Biosecurity knowledge/intelligence - what is it telling MEIT? What is missing?
7. Developing a table of potential improvements as talking points for review.
8. Consultation with CEO, key staff and contractors to undertake a stocktake of current Biosecurity Plan to ascertain what is working and what needs to be altered/ updated/ added to meet the anticipated needs for the Trust over 2021 – 2026.  
Important anticipated needs are likely to cover; the effects of climate change, management of disease (such as *M. bovis* and myrtle rust), integration of iwi perspectives, maintaining biosecurity in the face of increased tourism and an aging fence, developing a stronger social media presence, and introducing new technologies (e.g. GIS, detection methods, sniffer dogs, remote sensing, new traps, lures and toxins).
9. Consultation with key staff from Manaaki Whenua-Landcare Research, MPI, DOC, WRC and WDC to ascertain their views on efficacy of current Plan and suggestions for improvements.
10. Revision of what and how SMM derived biosecurity data is reported and how technical advice is integrated by SMM.
11. Engagement with iwi representatives facilitated by Mana whenua Trustees to collate Maori views of biosecurity needs for the Sanctuary.
12. Establishing a schedule of policy changes and actions needed to improve the current Plan.
13. Preparing a draft Biosecurity Plan 2021-2026 and submit for CEO, STAP and Trust Board to consider.

**1.2 Develop a practical Operational Plan that Prioritises Key actions to addresses key issues Identified above:**

1. Where are the gaps? Expand current biosecurity system to a full suite of prioritised potential risks/threats – e.g.: mammal pests; weeds; avian diseases; fungus/bacteria/pathogens (like Kauri

die-back and other *Phytophthora*); insects (e.g., Argentine Ants); pesticide issues (e.g. residues/secondary & non-target contamination/ pesticide resistance); agricultural biosecurity issues that might restrict access across adjoining properties (e.g. *Mycoplasma bovis*).

2. What are the priorities and sequence for recommended actions?
3. What is needed on and around the mountain to keep a **proactive** eye on future risks?
4. What do staff want/need to make effective biosecurity happen?
5. Develop a calendar/action Plan to guide biosecurity action.

**Sources of information and key people**

- Trust personnel, iwi and key stakeholders
- Desktop review of technologies appropriate to Plan
- Review of technologies currently being adopted by SMM.

**Sources of information/Knowledge to be explored as part of Review:**

- **Trust personnel** - Staff / Contractors are the Trusts eyes and ears. There is many decades of historical experience and knowledge among existing staff. Forward-thinking, informed, motivated and vigilant (staff who notice things that are different or that are not right), is mission critical.
- **Volunteers** - As staff above.
- **Iwi** (Matauranga) - the long term (intergenerational) knowledge of people deeply connected as Mana Whenua, who can see things that are different or that are not right is hugely valuable.
- **Industry Best Practise.**
- **Key Partners** WRC/WDC/DOC. What role can they play through direct support or through statutory mechanisms such as Regional Pest Management Strategy Rules or Biosecurity support funding.
- **Technical Experts** - Manaaki Whenua-Landcare Research, MPI, DOC and others where relevant.

**Other info** - review of other or developing technologies appropriate to Sanctuary Mountain. (E.g. dogs, digital tools, detection devices, camera traps)

**What's out of scope.**

- In depth investigation of new technologies.
- Specific inclusions from any of the key stakeholders unless mandated by Trust.
- Community or landowner meetings (excepting up to 3 landowners may be involved to ascertain adjoining land management in relation to biosecurity issues).

**Key tasks and timeframes**

- ✓ Peruse Restoration Plan and review current Biosecurity Plan - August 2020
- ✓ Meet with CEO, key staff and Mana whenua- August 2020
- ✓ Interview key stakeholder staff and mana whenua - September 2020
- ✓ Tabulate key issues (1.1.7 above) and test with CEO/ key staff/ STAP - October 2020
- ✓ Submit draft Biosecurity and Operational Plans 2021-2026 to CEO by 30 November 2020
- ✓ Present both drafts to MEIT Board December 2020

Appendix 2



# Landscape Impact Assessment

**New Education Centre**

for the

**Maungatautari Ecological Island Trust**



5 August 2019

16-001



**Pua Architects Ltd**





## CONTENTS

|           |  |           |
|-----------|--|-----------|
| <b>1.</b> | <b>Introduction</b>  | <b>4</b>  |
| <b>2.</b> | <b>Site location</b>   | <b>4</b>  |
| <b>3.</b> | <b>Project Description</b>                                     | <b>5</b>  |
| 3.1.      | Overview   | 5         |
| 3.2.      | Purpose and Design   | 5         |
| 3.3.      | Site Context   | 5         |
| 3.4.      | Architectural Form and Materials                               | 6         |
| <br>      |  |           |
| <b>4.</b> | <b>Relevant Rules of the Waipa District plan</b>               | <b>7</b>  |
| 4.1.      | Rule 21.1.25.1 - Earthworks                                    | 7         |
| 4.2.      | Rule 25.4.1.1 (d) – Assessment Criteria                        | 8         |
| 4.3.      | Rule 25.4.2.2 – Colour of Buildings                            | 10        |
| 4.4.      | Rule 25.4.2.3 – Colour of Roof                                 | 11        |
| 4.5.      | Rule 25.4.2.4 – Glazing of Structures and Buildings            | 11        |
| <br>      |  |           |
| <b>5.</b> | <b>Photographs of the Site</b>                                 | <b>12</b> |
| <b>6.</b> | <b>Conclusion – Assessment of Landscape and Visual Effects</b> | <b>15</b> |
| <b>7.</b> | <b>Appendix A – Precedent images</b>                           | <b>16</b> |
| <b>8.</b> | <b>Appendix B – Education Centre Plans &amp; Elevations</b>    |           |
| <b>9.</b> | <b>Appendix C – Cladding Colour Evidence</b>                   |           |

Antanas Procuta

**Antanas Procuta** FNZIA B Arch B B Sc  
 Registered Architect NZRAB 2211  
**Paua Architects Ltd**

*PAUA Architects Ltd has been commissioned by the Maungatautari Ecological Island Trust as client to prepare this Landscape Impact Assessment. It is solely for their use for the agreed purpose. Paua does not accept liability or responsibility for any use of the report outside of the agreed scope, or to those other than the client. Where the information has supplied by others for the preparation of this report, it is assumed to be accurate and suitable for the purpose, unless otherwise indicated. Paua accepts no liability or responsibility for any errors or omissions arising from material supplied by others.*



1. Part site plan, indicating location of proposed Education Centre in relation to the Manu Tioriori Visitor Information Centre at Sanctuary Mountain.



## 1. INTRODUCTION

Manu Tioriori is the Visitor Information Centre for Sanctuary Mountain; a mainland ecological island, wildlife sanctuary, and conservation project, managed under the Maungatautari Ecological Island Trust (MEIT).

The aims of the trust - working in partnership with iwi, landowners, the community and non-government entities, and local and central government - includes inspiring and educating people at a national and international level to become involved in environmental conservation. Since its inception in 2001, the Trust has endeavoured to grow its reach and effectiveness in its aims, and this has included educating classes of school-age children, making use of the nearby Pukeatua school for off-site classroom facilities.

As part of enhancing the educational and conservation work, the trust is to build an on-site three-classroom facility to accommodate teaching and educational purposes, for up to 90 students on regular basis, from time to time 120 people, and including occasional overnight stays for up to 40 people (limited by fire regulations).

The Manu Tioriori property is in a Rural Zone of Waipa District Council, and within an "Outstanding Natural Feature and Landscape Policy Area", and also within a 'Cultural Landscape Policy Area".

The purpose of this landscape impact assessment is to consider the visual effects that the proposed development of the new education centre at the Manu Tioriori Visitor Centre may have within the surrounding environment in relation to the relevant rules of the Waipa District Plan.

A separate Resource Consent (LU/0234/13.01) has previously been granted for the Visitor Centre, Car Parking and Wetland Guided Tours.

## 2. SITE LOCATION

Address: 99 Tari Road, Pukeatua  
 Legal: Lot 3 DP451181, Lot 4 DP 451181  
 Zoning: RURAL  
 Policy Areas: Outstanding Natural Feature and Landscape Policy Area  
 and Cultural Landscape Policy Area

The site is located on the foothills of Maungatautari Mountain. Together with the 4GIV Trust at the head of the road, the Manu Tioriori Visitor Centre are the last properties on Tari Road before the Sanctuary Mountain fence line.

The proposed Educational Centre is not visible from a public place other than from the Maungatautari Ecological Island reserve itself, and – at a distance of around half a kilometre – from Arapuni Road, at which scale the Education Centre would be barely visible.

### 3. PROJECT DESCRIPTION

#### 3.1 Overview

The proposed Education Centre is a single-storey, three-classroom facility set in the landscape below the staff carpark of the MEIT Manu Tioriori Visitor Information Centre.

The Education Centre is envisaged as a separate destination specifically for groups coming to Sanctuary Mountain for educational purposes, and hence – once on the property - has an entrance and identity distinct to those of Manu Tioriori.

In addition to accommodating school groups, the education centre is to be a venue suitable for visitor experience, community, volunteer, corporate and VIP events, including workshopping, multi-media and conference presentations.

#### 3.2 Purpose and Design

The purpose of the Education Centre is to improve the offering of Sanctuary Mountain Maungatautari by enabling larger groups of visitors of all ages to engage with the conservation and restoration project in a variety of ways.

The facility is to accommodate 90 students, accompanying teachers and parents, and overnight camps accommodating up to 40 people sleeping over. It is envisaged that there may be very occasional events when there will be up to 120 people there at one time.

The southern single classroom accommodates around 35 people, and has a small kitchenette and a demonstration facility. It is a place where visitors are welcomed and provided an orientation introduction to Sanctuary Mountain, its purpose and work.

The northern building component is a double classroom space able to accommodate 60-80 people in a classroom configuration, the number depending on whether they're children or adults. The double classroom also has the ability and purpose to sleep up to 40 people for Sanctuary Mountain classes and visitors for overnight courses and experiences.

A storeroom for classroom chairs and tables is situated on the southern 'front' porch, and – on the north porch, is a single Accessible Toilet and shower facility, plumbed into the on-site wastewater treatment system. This toilet is supplemented by six composting toilets very close by.

#### 3.3 Site Context

The Education Centre design specifically builds on the nature of the marae ātea and manākitanga; and the intent for the architecture to welcome visitors to the Education facility, Manu Tioriori and Maungatautari. This philosophy is expressed in the nature of the generous veranda space and mahau at both the south end (the main entry from the carpark), and the north end (facing the mountain and north sun).



The classrooms are linked by verandas and, together, this provides a cohesive singular building form, with allusions in both architectural form and colour to farm buildings, tramping huts, and wharenuī typical of the New Zealand landscape. (refere illustrations appended). There is prospect for whakairo-carving around both the southern porch (facing manuhiri-visitors) and the northern porch facing the maunga.

The siting of the proposed Education Centre means that the Entry faces south to the carpark, that the sun rises over the roof of Manu Tioriori to the east; that the northern, more private, porch faces to the Maungatautari slopes and the lunchtime sun, and that the western aspect faces over farmland to the setting sun. The predominant winds come from the west and south-west, and these are the most exposed faces of the building.

New native tree planting on both the eastern side of the bank up to Manu Tioriori, and on the western flank, is intended to anchor the building into the forest and bush context of the Maungatautari landscape.

#### 3.4 Architectural Form and Materials

The Education Centre is configured as a single building with verandas linking the classroom elements. The roof slope matches that of the Manu Tioriori building alongside and also the slope of hillside on which the building is set.

The floor height is set close to level with the top end of the public carpark, so as to provide an Accessible entrance with a linking timber terrace from the carpark to the Education Centre. A slight cutting into the hillside along the eastern/upper edge of the building is required to effect this.

A large Entry Porch symbolises the welcoming paepae, but also is a pragmatic shelter from rain and sun where people can take off shoes, boots and school backpacks before going into the classroom. Exterior-grade seating and cubbyhole storage facilities are provided in all the porch areas for this.

The Education Centre is built on piled foundations with a suspended timber floor mostly above natural ground level (as opposed to a concrete slab floor cut into the landscape), and the floor plate is kinked to follow the contour of the existing landform.

The wall and roof cladding is to be corrugated coloursteel, windows and doors are to be aluminium joinery, and timber batten suncreening and balustrading. Photovoltaic and solar hot-water panels are to be installed on the roof, facing northwards.

The three classrooms (251sqm), associated toilet and storeroom (13 sqm) total a building area of 264 square metres. The covered veranda and walkways total 229 square metres, giving a total coverage area of some 495 square metres. Along the lower (western) flank, the building is 5.2 metres high to the spouting level above ground level, and along the eastern flank (upper side) the building is some 4.3 metres above ground level.

#### 4. Relevant rules of the Waipa District Plan

##### **21.1.25.1 New farm access tracks and earthworks (including farm quarries) greater than 500m<sup>3</sup> per calendar year**

- (a) The extent to which the earthworks are visible from a public place.
- (b) The extent to which the planting plan will mitigate effects in landscape values.
- (c) The extent to which the farm access track and earthworks responds to the guidelines in Appendix DG7.

#### 4.1 Earthworks

The uphill side (ie; the eastern side) of the slope adjacent to the proposed Education Centre is to be excavated, and battered and/or retained approximately 1.0m high for the length of the building (some 35 metres), requiring some 70 cubic metres of earthworks. The battered / retained landform is to be re-planted with native trees indigenous to the area.

To the immediate northern side of the proposed Education Centre (ie; facing Maungatautari) the land will be levelled and terraced to create an outdoor assembly and teaching amphitheatre. This comprises a triangular area of approximately 13 by 15 metres, excavating and terracing incrementally up to 1.8 metres in height amounting to some 180 cubic metres. This area is to be replanted with grass.

Minor earthworks is required for the installation (and backfilling) of a wastewater treatment drainage field.

Therefore, the earthworks in total comes to approximately 250 cubic metres, all of which involves re-shaping of the land rather than earth removal from the property, and therefore complies with Rule 21.1.25.1, and the Earthworks component of Rule 21.1.25.2.

As noted above, planting around the Education Centre and adjacent outdoor area are a key component of the landform restoration. Native trees are planted in the area of the earthworks, and on the immediate lower / west aspect of the Education Centre in order to address the building's height and exposure on the western flank.

4.2

Assessment criteria:

**25.4.1.1 (d) for Buildings 3 – 8m in height and /or greater than 20 sqm in area**

- (a) The extent to which the location and scale of the building obstructs or detracts from the landscape or feature.
- (b) The extent to which the colour and materials integrate the building into the landscape.
- (c) The extent to which the building has used low reflecting glass and limited glazing to minimise reflectivity.
- (d) The protection of existing vegetation and/or proposed mitigation/enhancement planting to assist the visual integration of built form.
- (e) Retaining wall scale, materials and colour.
- (f) Fencing scale, materials and height.
- (g) Driveway location, integration with the landscape and colour/materiality.
- (h) The extent to which a building extends above a ridgeline.
- (i) In the River and Lake Environs Landscape Area, whether the whole of the building and structure including the roof is below the ridgeline when viewed from the Waikato River and its associated lakes.
- (j) Within the high amenity landscapes and the river and lake environs:
  - (i) The extent to which the building is set back from the river and does not dominate the river landscape; and
  - (ii) The extent to which the location of the building and accessway integrates into the surrounding natural environment; and
  - (iii) Whether the grouping of buildings obstructs or detracts from the landscape or feature; and
  - (iv) The extent to which the building does not compromise cultural values associated with the River.
- (k) On vacant sites, whether the building location is constrained by other topographical or geotechnical constraints; and
- (l) The extent to which the building responds to the guidelines in Appendix DG7.

Addressing the above.

- a) The proposed Education Centre – by the nature of its function (which is appropriate to the site) - is a large building. This is mitigated by a number of considerations:
  - ◆ The Education Centre is not viewed from public places,
  - ◆ The form is low-lying, with the roof slope matching that of the adjacent Manu Tiorori Visitor Centre, and the slope of the hillside on which the building is sited.
  - ◆ The building form is articulated, and follows the lie of the land.
  - ◆ Native planting will be reinstated and implemented immediately adjacent to the new building
- b) As below, the colours comply with Appendix N6, and the materials are appropriate to the function and the location.
- c) Noted below.
- d) As noted generally with this report, and refer to accompanying Landscape Plan SK04 dated 5 August 2019.

- 
- e) Retaining is generally battered and or terraced landform. Any fabricated retaining walls are low (of approximately 1.0 metre in height) and will be timber crib.
  - f) No fences, therefore not applicable.
  - g) Not required under this Resource Consent application.
  - h) The building is not sited in a situation where it would be seen against a ridgeline.
  - i) Not applicable.
  - j) Not applicable.
  - k) The building location has been selected as the most appropriate available in relation to functional requirements and site constraints (boundaries, landform, access, etc)
  - l) The Education Centre design complies with all the intents and recommendations within Appendix DG7; the Design Guidelines for buildings and works within an area of Outstanding Natural Features and landscapes.



4.3 Rules - Colour of buildings

25.4.2.2 For all buildings within natural landscapes and viewshafts identified on the Planning Maps, the whole of the walls and façade of the structure (including doors, window sills, and chimneys) shall be finished so that they are either of:

- (a) Unpainted natural timber board or batten; or
- (b) Uncoated brick, stone, or concrete block, or any surface coated with paint, stain or varnish but in each case, the colours must be in accordance with Appendix N6; or
- (c) A combination of the above.

The exterior of the Education Centre is clad and coloured as follows:

| Element:                         | Material:                    | Colour:                                     |
|----------------------------------|------------------------------|---|
| Roof & spouting                  | Corrugated coloursteel       | Colorsteel SCORIA (equiv RED OCHRE 04 C 49) |
| Photovoltaic panels              | Glass-faced (dark-receptors) | Unfinished                                  |
| Wall cladding                    | Corrugated coloursteel       | Colorsteel SCORIA (equiv RED OCHRE 04 C 49) |
| Downpipes                        | PVC or p.c. aluminium        | Colorsteel SCORIA (equiv RED OCHRE 04 C 49) |
| Exterior joinery                 | Powder-coated aluminium,     | Black powdercoat                            |
|                                  | & sheet glass                | Clear, non-tinted & non-reflective          |
| Posts, balusters & shade battens | Natural timber               | Black paint or stain                        |
| Decking                          | Natural timber               | Unfinished (natural)                        |
| Sub-floor framing                | Natural timber               | Unfinished (natural)                        |

Colorsteel SCORIA is not discernibly different by eye in the landscape context to BS 5252 RED OCHRE. Side by side, the colour SCORIA is less bright than RED OCHRE. Refer to the appendix in this LIA.

Similarly, BLACK is not discernibly different by eye in the landscape to BS 5252 CHARADE.

On the basis that Colorsteel SCORIA is an acceptable close match to RED OCHRE (Chart BS 5252 : 04 C 49), and BLACK is an acceptable close match to CHARADE (Chart BS 5252 : 18 B 27), both scheduled in Appendix N6 in the district plan, the exterior colours comply with all the requirements of Rule 25.4.2.2.




---

#### 4.4 Rule – Colour of roofs

- 25.4.2.3 The whole of the roof of the building in a natural landscape or viewshaft identified on the Planning Maps shall be finished in the colours set out in Appendix N6, provided that:
- (a) This rule does not apply to an extension of an existing dwelling or accessory building or a farm building that is not visible from a public place; and
  - (b) In the event that the extension is visible from a public place, the extension and existing building shall comply with the colours set out in Appendix N6; and
  - (c) Roofs, shall use a darker colour than the walls of the building.

---

As listed in the Exterior Materials schedule above, the roof colour is to be Colorsteel SCORIA, which complies with Rule 25.4.2.3.

The colour scheme DOES NOT provide for a darker roof than the wall colour. As noted further above, the proposed Education Centre is not visible from a public place other than from the Maungatautari Ecological Island reserve itself and – at a distance of around half a kilometre – from Arapuni Road.

Also as noted above (Site Context), the design intent of the colour scheme is in keeping with many rural, heritage and other buildings and structures found in the New Zealand countryside.

---

#### 4.5 Rule - Glazing of structures and buildings

- 25.4.2.4 In an outstanding landscape or viewshaft identified on the Planning Maps where more than 40% of any exterior wall that is visible from a public place is in glazing, buildings shall:
- (a) Have a minimum overhang or eave of 600mm; and/or
  - (b) Use glass with reflectivity of 2% or less; and/or
  - (c) Windows and doors shall be recessed at least 0.5m from the façade.

---

As all glazing on this building complies with one or more of:

- Having less than 40% of an exterior wall glazed,
- Is not visible from a public place,
- Is under an overhang or eave greater than 600mm deep,
- The doors and / or windows are recessed 500mm or more,

The proposed design, materials and fenestration comply with Rule 25.4.2.4.

Photovoltaic panels and solar hot water panels are likely to be affixed to the roof. The panels will face directly north (towards the Maunga), at approximately 35 degrees to the horizontal. The north-facing orientation of the panels means that reflectance of any light will be seen primarily from within the Sanctuary Mountain Reserve. As the panels face away from roads etc, no reflectance will be seen from public places. Likewise, it is unlikely that reflectance will affect neighbouring properties.



## 5. Photographs of Site



1. Site Entrance on left. End of Tari Road in view. No view of proposed Education Centre.



2. View from Tari Road. (Current Site Entrance to be upgraded under previous Resource Consent). Proposed Education Centre is to left of the Manu Tioriori Visitor Information Centre (visible), and is out of view.



3. Tari Road road-end. (Carparking for MEIT relocates on-site under previous Resource Consent).



4. On-site view looking north, with Manu Tioriori Centre at the right of the image. The proposed Education Centre is at the drive end before the rise, and to the immediate left of the planting on the bank.



5. On site, viewing north to the Manu Tioriori Visitor Information Centre, and the lower rises of the Maungatautari reserve beyond.



6. On site, viewing north-east from alongside Tuatara & Takahe enclosure. The proposed Education Centre is sited in the centre of the image against the planted bank. The Education Centre floor level is approximately 4.75 metres below the main floor level of Manu Tioriori (just visible).



7. North-end view of Manu Tioriori. Proposed Education Centre is located to the right of the ti kouka / cabbage tree.



8. Proposed Education Centre is sited between the planting on the left, and the path on the right.



9. Photomontage of the proposed Education Centre set against Manu Tioriori. To the right of the Education Centre is the battered bank of the carpark. Neither the carpark nor private vehicles are able to be seen, owing to the viewing angle from this position.

## 6. CONCLUSION - ASSESSMENT OF LANDSCAPE AND VISUAL EFFECTS

The proposed development of an Education Centre at the Maungatautari Sanctuary alongside the Manu Tioriori visitors centre, is a natural and intended progression for Sanctuary Mountain.

While this results in a built intervention in the 'Outstanding Natural feature and Landscape Policy Area', the nature of the design relates appropriately to both the surrounding rural landscape, the landform, and the environmental education purpose of the Sanctuary Mountain facility.

The Education Centre design complies with all the intents and recommendations within Appendix DG7 (the Design Guidelines for buildings and works within an area of Outstanding Natural Features and Landscapes), as the architecture is designed to be contextual with the rural environment. It complies with Appendix N6 for colours, excepting that the roof is not darker than the walls.

Potential adverse visual effects will be minimised with native planting to integrate the new works with the immediate environment.

The reshaping of the landscape is minimal, and - with the new native plantings planted throughout the development - will provide a visual integration with the surrounding landscape in keeping of the Maungatautari environment.



7. APPENDIX - PRECEDENT IMAGES

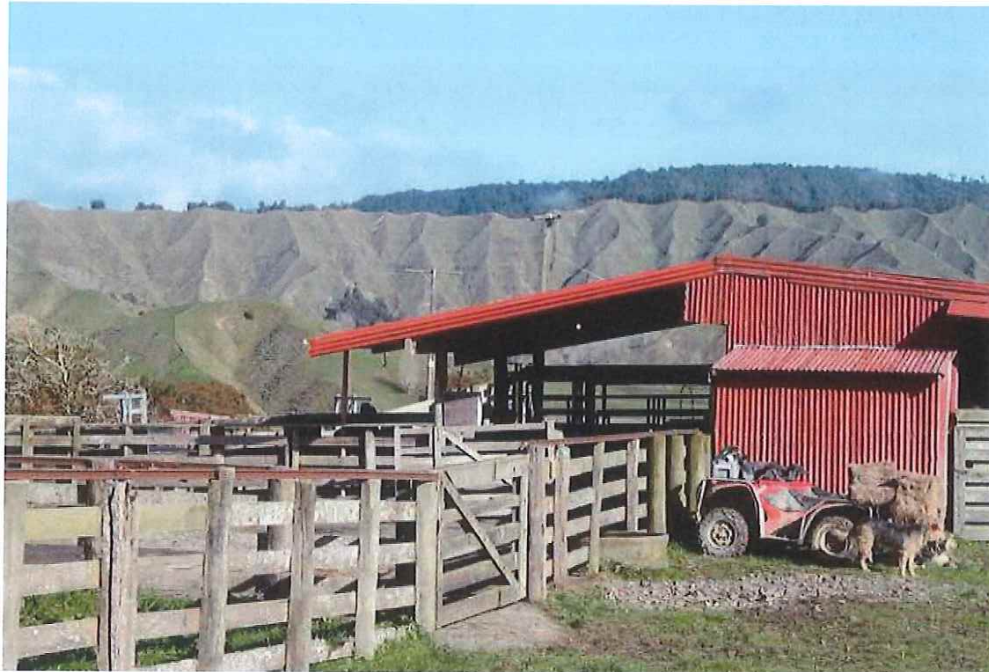


A1. Alpine DOC Hut



A2. Tongariro National Park – Historic Waihohonu Hut

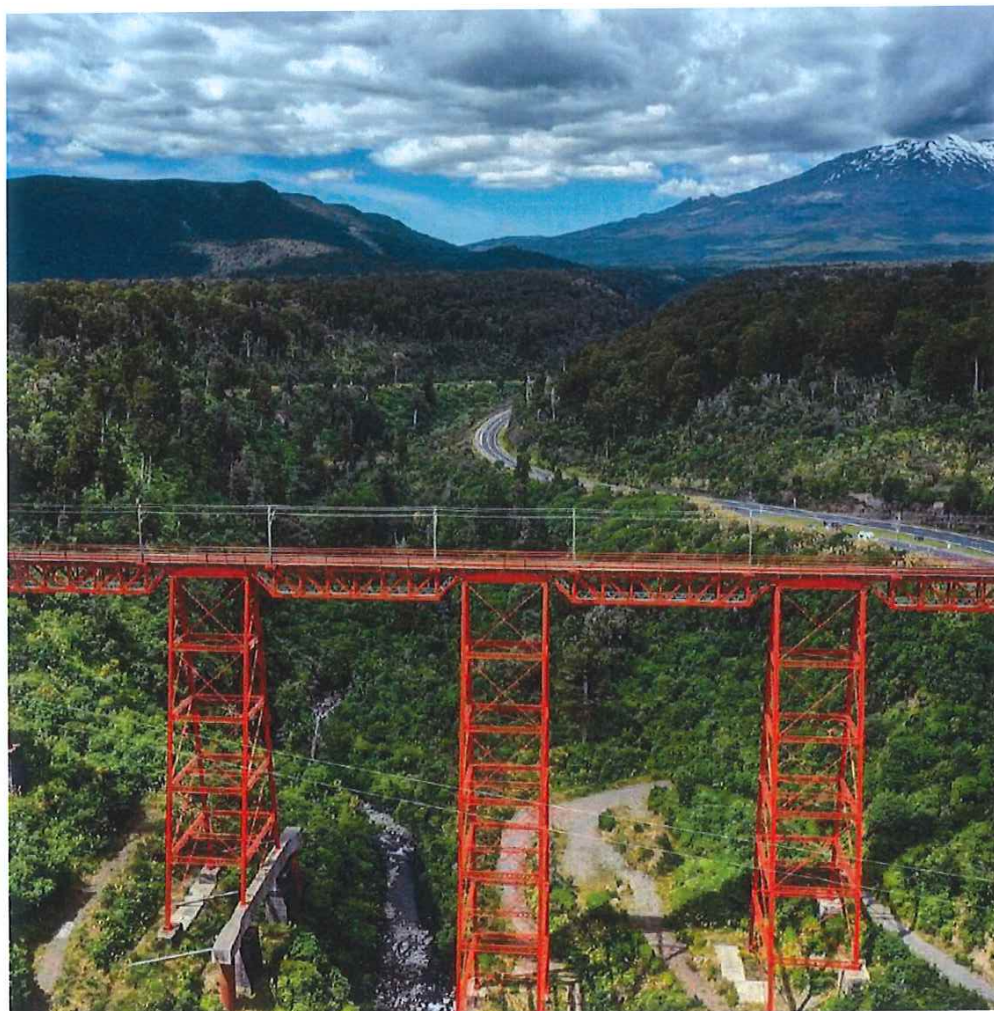




A3. King Country Farm Shed



A4. The Camphouse DOC Hut



A5. Makatote Shed



SK-01 - SITE  
EDUCATION CENTER @ 99 TARI ROAD, MAUNGATAUTARI for M.E.I.T

DATE: 22 JUL 2019  
SCALE: 1:250



pauaarchitects.co.nz

3 Anzac Parade, Hamilton  
office@pauaarchitects.co.nz

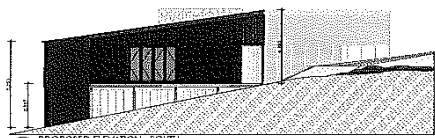
This drawing is copyright © PAUA Architects Ltd



PROPOSED ELEVATION - NORTH  
SCALE: 1:50



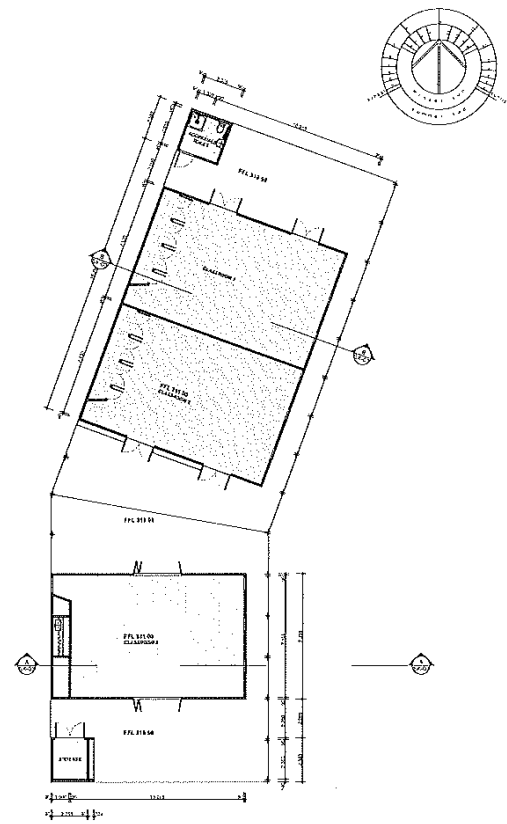
PROPOSED ELEVATION - EAST  
SCALE: 1:50



PROPOSED ELEVATION - SOUTH  
SCALE: 1:50



PROPOSED ELEVATION - WEST  
SCALE: 1:50

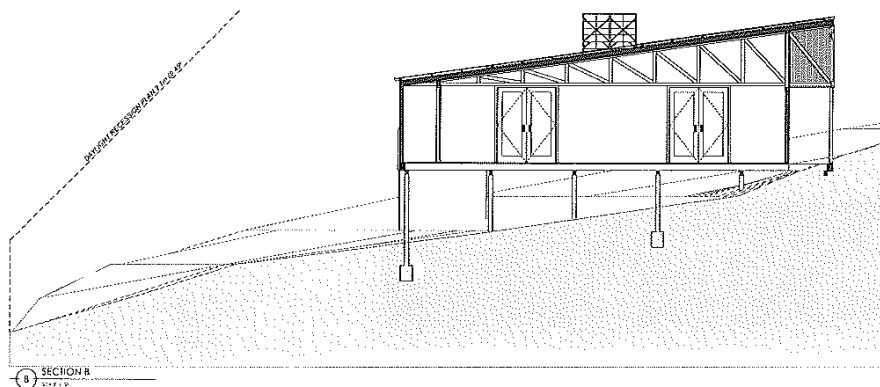
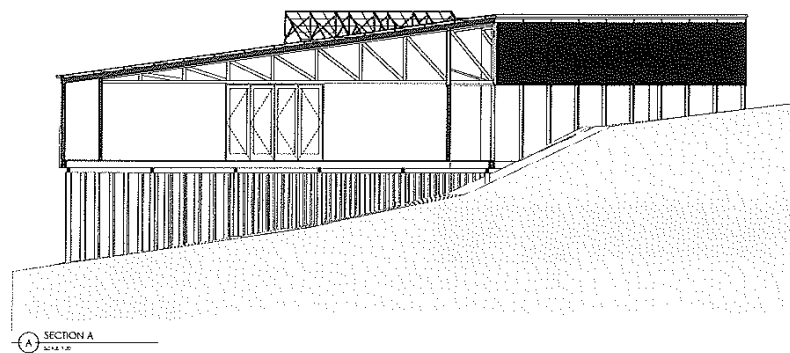


16-001

**SK-02 - CONCEPT PLAN & ELEVATIONS**  
**EDUCATION CENTER @ 99 TARI ROAD, MAUNGATAUTARI for M.E.I.T**

DATE: 22 JUL 2019  
 SCALE: 1:100

**PAUA**  
 pauaarchitects.co.nz  
 3 Arara Parade, Hamilton  
 office@pauaarchitects.co.nz  
15% Planning Fee (10% P&I & 5% P&A Architects Fee)



16-001

SK-03 - SECTION  
EDUCATION CENTER @ 99 TARI ROAD, MAUNGATAUTARI for M.E.I.T

DATE: 22 JUL 2019  
SCALE: 1:50

**PAUA** pauaarchitects.co.nz  
3 Anzac Parade, Hamilton  
office: 07 578 1111 / 07 578 1112  
7/15, Princes Street, Auckland  
PAUA ARCHITECTS LTD



the paint the professionals use

## Colour swatches online



Colour name: **Resene Red Ochre cc**

Total colour code: R37-059-029

Chart colour code: 04C39

Tone: Magenta

Colour palette: Red

RGB:

Hex values: #612D2D

LAB:

CMYK:

Approx. LRV:

Colour pencil recipe:

Colour chart/range: Resene BS5252 range (2008)

[- Download instructions -](#)

Colours are a representation only. Please refer to the actual paint or product example. [Resene](#)



the paint the professionals use

Get inspired

Colours

Paint/Stains

Wallcoverings

Curtains

Specifications

Painters

DIY

Artists

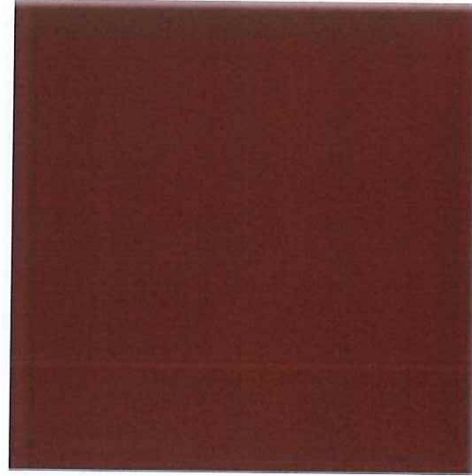
Schools

Order

Blog / News | E-news sign up | Stores



## Colour swatches online



Colour name: **COLORSTEEL® Scoria**

Total colour code: -

Chart colour code: -

Tone: -

Colour palette: -

RGB:

Hex values: -

LAB:

CMYK:

Approx. LRV:

### - Download instructions -

Colours are a representation only. Please refer to the actual paint or product sample. Resene colour charts, testpots and samples are available for ordering online. See [measurements / conversions](#) for more details on how electronic colour values are achieved.

Colour pencil recipe:

Colour chart/range: **COLORSTEEL®**

Complementary colours: -

Colour notes: -



**INFORMATION ONLY**

**To:** The Chairperson and Members of the Maungatautari Reserve Committee  
**From:** Senior Reserves Planner  
**Subject:** **MAUNGATAUTARI RESERVE MANAGEMENT PLAN REVIEW UPDATE**  
**Meeting Date:** 24 June 2020

---

## **1 EXECUTIVE SUMMARY**

The draft Maungatautari Reserve Management Plan consultation started on 25 May 2020 and will run through until 5pm 31 July 2020 (10 weeks). Public notices were placed in the following papers; NZ Herald, Waitomo News, Te Awamutu Courier, Cambridge Edition, South Waikato News and the Waikato Times. Letters have been sent to mana whenua, key stakeholders, previous submitters and adjoining landowners. Council has been promoting the consultation on their social media platforms. Hard copies of the plan are available at council offices, the districts libraries and Manu Tioriori. Sanctuary Mountain has also promoted the consultation period in its May Matters newsletter on 05/06/2020 and has put up signs encouraging visitors to provide feedback on the draft RMP.

As of 17/06/2020, 10 submissions had been received. A hearings panel consisting of two independent commissioners will consider submissions in early September. Their recommendations will then be reported to the Reserves Committee prior to being reported up to council's Strategy, Planning and Policy Committee.

---

## **2 RECOMMENDATION**

*That the information from Senior Reserves Planner Anna McElrea be received*



# MAUNGATAUTARI RESERVE COMMITTEE REPORT



**INFORMATION ONLY**

**To:** The Chairperson and Members of the Maungatautari Reserve Committee  
**From:** Manager Community Services  
**Subject:** **LANDOWNER AGREEMENT UPDATE**  
**Meeting Date:** 24 June 2020

---

## **1 EXECUTIVE SUMMARY**

---

Unfortunately due to the restrictions imposed by Covid19, Greg Martin has not been able to significantly progress Landowner agreements. A verbal update will be provided at the meeting by Community Services Manager, Sally Sheedy on the latest progress made.

## **2 RECOMMENDATION**

---

*That the information from Manager Community Services Sally Sheedy be received.*

# MAUNGATAUTARI RESERVE COMMITTEE REPORT



**INFORMATION ONLY**

**To:** The Chairperson and Members of the Maungatautari Reserve Committee  
**From:** Manager Community Services  
**Subject:** **HICKS ROAD ACCESS**  
**Meeting Date:** 24 June 2020

---

## **1 EXECUTIVE SUMMARY**

---

Community Services Manager, Sally Sheedy will provide a verbal update at the meeting.

## **2 RECOMMENDATION**

---

*That the information from Manager Community Services, Sally Sheedy be received.*