

Strategic Planning & Policy Committee Public Agenda 19 June 2023

Council Chambers
Waipā District Council
101 Bank Street
Te Awamutu



Chairperson
EM Stolwyk

Members

Her Worship the Mayor SC O'Regan, AW Brown, LE Brown, PTJ Coles, RDB Gordon, ML Gower, MG Montgomerie, MJ Pettit, CS St Pierre, BS Thomas, Vacancy

19 June 2023 09:00 AM

Agenda Topic	Presenter	Time	Page
1. Apologies	Chairperson	09:00 AM-09:01 AM	2
2. Disclosures of Members' Interests	Chairperson	09:01 AM-09:02 AM	3
3. Late Items	Chairperson	09:02 AM-09:03 AM	4
4. Confirmation of Order of Meeting	Chairperson	09:03 AM-09:04 AM	5
5. Hearing Report - Draft Sainsbury Road Reserve Management Plan	Aidan Kirby-McLeod	09:04 AM-10:34 AM	6
5.1 Appendix 1: Draft Sainsbury Road Reserve Management Plan 2023			13
5.2 Appendix 2: All Submissions and staff recommendations to draft Sainsbury Road Reserve Management Plan			28



APOLOGIES



DISCLOSURE OF MEMBERS' INTERESTS

Members are reminded to declare and stand aside from decision making when a conflict arises between their role as an elected member and any private or other external interest they may have.



LATE ITEMS

Items not on the agenda for the meeting require a resolution under section 46A of the Local Government Official Information and Meetings Act 1987 stating the reasons why the item was not on the agenda and why it cannot be dealt with at a subsequent meeting on the basis of a full agenda item. It is important to note that late items can only be dealt with when special circumstances exist and not as a means of avoiding or frustrating the requirements in the Act relating to notice, agendas, agenda format and content.



CONFIRMATION OF ORDER OF MEETING

Recommendation

That the order of the meeting be confirmed.

COMMITTEE REPORT



To: Chairperson and members of Strategic Policy and Planning Committee (hearing meeting)

From: Consultant – Lightning Rod Consultancy

Subject: **Hearing Report – Draft Sainsbury Road Reserve Management Plan**

Meeting Date: 19 June 2023

1 PURPOSE – TAKE

The purpose of this report is to enable the Strategic Policy and Planning Committee ('Committee') to receive, consider, and where requested, hear submissions on the draft Sainsbury Road Reserve Management Plan ('RMP'), and approve the final RMP in accordance with the Reserves Act 1977 ('the Act').

2 EXECUTIVE SUMMARY – WHAKARĀPOPOTOTANGA MATUA

On 7 March 2023, the Committee approved the draft RMP (Appendix 1) for consultation. The consultation period ran from 23 March to 23 May 2023 with a range of community engagement opportunities provided.

A total of 60 submissions were received on the draft RMP, with three submitters wishing to be heard. The majority of submitters were very supportive of the draft RMP. There was strong support for horse riding at the reserve to continue, and for the reserve to be planted out in native vegetation only. Based on the submissions received, analysis of the submissions and discussions with relevant Council staff, changes to the vegetation cover and recreation activities at the reserve are recommended.

The Committee is now asked to consider all the submissions and to approve the final RMP, following the outcome of that consideration.

3 RECOMMENDATION – TŪTOHU Ā-KAIMAHI

That the Strategic Planning and Policy Committee:

- a) *Receives the report of Amanda Banks, Consultant – Lightning Rod Consultancy titled Hearing Report – Draft Sainsbury Road Reserve Management Plan (document number 11011072);*
- b) ***Notes** that Waipā District Council, as administering body of the Sainsbury Road Reserve, consulted on the draft Sainsbury Road Reserve Management Plan in accordance with section 41 of the Reserves Act 1977;*
- c) ***Receives and considers** the written submissions attached as Appendix 2 (document number 11032536) to this report, and **receives, hears and considers** the verbal submissions, arising from the consultation on the draft Sainsbury Road Reserve Management Plan;*
- d) ***Approves** the staff recommendations for changes to the draft Sainsbury Road Reserve Management Plan arising as a result of the submissions referred to in recommendation c), as attached in Appendix 2 (document number 11032536);*
- e) ***Approves** the draft Sainsbury Road Reserve Management Plan attached as Appendix 1 (document number 10970936) pursuant to section 41 of the Reserves Act 1977 to take effect on 1 August 2023, as amended:*
 - i) *to incorporate the staff recommendations outlined in recommendation d)*
 - ii) *following deliberations of submissions by the Committee;*
- f) ***Delegates** to the Group Manager Customer and Community Services authority to amend the draft Sainsbury Road Reserve Management Plan to implement the approval under recommendation e), and make typographical, formatting and other minor amendments to the RMP prior to publication, and;*
- g) ***Delegates** to the Group Manager Customer and Community Services authority to remove reference to the Sainsbury Road Reserve from the Urban Reserves Management Plan Volume 2 (Pirongia, Kihikihi & Ohaupo) (document number 50932640), as a consequence of the approval in recommendation e).*

4 BACKGROUND – KŌRERO WHAIMĀRAMA

Process to date

Sainsbury Road Reserve (‘the reserve’) is a 41-hectare recreation reserve on the foothills of Mount Pirongia. The reserve is currently subject to a short-term grazing lease and is accessible to the public. The reserve is popular with horse riders and passive recreation users.

In 2015, Council resolved to develop a stand-alone reserve management plan for the reserve. An initial phase of community engagement was undertaken, but the project was paused due to staff resourcing. The project was re-initiated in June 2022.

In order to inform the draft RMP, a focus group was established, which comprised representation from mana whenua, the horse-riding community, the Pirongia Mountain Bike Club, the Taiea te Taiao Ecological Corridor Project, the current graziers, the Chair of the Pirongia Community Association and a Waipā District Council Councillor. The group met three times between September and December 2022 and their feedback helped shape the draft RMP.

The draft RMP was presented to the Strategic Planning and Policy Committee on 7 March 2023 and approved for public consultation. Consultation ran from 23 March to 23 May 2023. The project team undertook the following in-person engagements:

- Drop-in session at Five Stags Pirongia on Wednesday 29 March, 5.00pm-7.30pm
- Presentation to the Pirongia Ward Community Board on Wednesday 12 April
- Stall at the Pirongia Markets on Sunday 30 April, 9.00am-12.00 midday
- Visit to Pūrekireki Marae on Sunday 21 May 2023, 11.00am – 1.00pm.

Draft Sainsbury Reserve Management Plan

The draft RMP vision – ‘Nature and people flourish at Sainsbury Reserve’ – was borne from the desire to create a green ribbon of lush native forest where people’s connection deepens as they connect with the land, share stories of time past and create new memories for future generations.

Four goals support the vision:

- Goal 1 – Restore native forest to improve nature’s strength and resilience;
- Goal 2 – Enable people to care for and restore nature;
- Goal 3 – Maximise recreational opportunities for a range of users;
- Goal 4 – Enhance people’s connection with and experience of the reserve.

Submission results

A total of 60 submissions were received, with the majority of submitters being very supportive of the draft RMP. In summary:

- 52 out of 60 submitters supported the vision of the draft RMP;
- 55 out of 60 submitters supported Goal One of the draft RMP;
- 55 out of 60 submitters supported Goal Two of the draft RMP;
- 50 out of 60 submitters supported Goal Three of the draft RMP;
- 52 out of 60 submitters supported Goal Four of the draft RMP;
- 48 out of 60 submitters supported the landscape concept plan in the draft RMP.

A total of three submitters requested to be heard in support of their submission.

Submission themes

Recreation use on the reserve

The majority of submitters supported the reserve being available for walkers, runners and horse riders only.

There was strong support for horse riding at the reserve, with 43 out of 60 submitters making specific mention of their support for horse riding. A total of 16 submitters opposed cycling being on the reserve, and five submitters supported cycling being on the reserve.

Some submitters mentioned whether dogs should be allowed at the reserve; five submitters supported dogs being on the reserve, and two submitters were opposed to dogs being on the reserve.

Vegetation cover on the reserve

There was strong support for the reserve to be planted out in native vegetation only. Nineteen out of 60 submitters made specific mention of their support for native vegetation exclusively, with only two submitters supporting the planting of exotic and native vegetation.

Submitters speaking in support of their submission

Under s41(6)(d) of the Act, submitters must be provided with an opportunity to speak in support of their submission. The following three submitters have confirmed they want to make a verbal submission:

- Ange Carson (Pirongia Horse Riders Club);
- Bill Harris (Ngāti Apakura);
- Les McKenzie and Adrian Bathgate (Pirongia Mountain Bike Club).

Staff recommendations

Based on the submissions received, analysis of the submissions and discussions with relevant Council staff, there are some changes recommended to the draft RMP. These changes relate to the vegetation cover and recreation activities at the reserve, as follows:

- The concept plan in the draft RMP is amended to provide only for the planting of native species on the reserve, rather than the proposed area of exotic and natives that could be used for selective forestry harvesting in the future. The rationale for this recommendation is based on the strong community support for native vegetation only.

Additionally, planting solely native vegetation is aligned with aspirations of the Taiaea te Taiao Ecological Corridor Project, which aims to restore an ecological corridor between Maungatautari and Pirongia along the Mangapiko River and the Ngāparierua Stream. The proposed 2.8-hectare continuous cover forestry area will still be available for selective harvesting should Council decide harvesting is worthwhile to pursue in the future;

- The wording in the concept plan regarding the proposed two-way cycle track running alongside the reserve is amended to reflect that the ecological restoration of the reserve and the improvement of recreational access across the reserve for walkers, runners and horse riders are the top priorities for implementation of the RMP.

The rationale for this amendment is that there was opposition from some submitters to the reserve being used for cycling, as well as strong support for the reserve being used for the recreational activities of walking, running and horse riding and for ecological restoration to be undertaken. Additionally, while the RMP provides a proposed location for the cycle track, the project is subject to analysis of the road safety benefits and costs, detailed design and sourcing of funding. It is recommended that the wording in the landscape concept plan (outlined in section 4 of the draft RMP) be amended:

- **FROM:** “Proposed 2-way cycle track generally aligned near road side boundary. Enables cyclists to avoid using road for length of reserve. Potential to create mountain bike track linkages on reserve. Track approx. 1.8km long”;
 - **TO:** “Proposed 2-way cycle track generally aligned within road corridor alongside the reserve. Enables cyclists to avoid using road for length of reserve. Track approx. 1.8km long”.
- The reserve be available for people walking (including people walking dogs on lead), running and riding horses only. This recommendation is in line with the submissions on the draft RMP;

As a consequence of the development of the draft RMP, the Urban Reserves Management Plan Volume 2 (Pirongia, Kihikihi & Ohaupo) will need to be modified so that reference to Sainsbury Road Reserve is removed.

5 SIGNIFICANCE & ENGAGEMENT – KAUPAPA WHAI MANA ME NGĀ MATAPAKINGA

Staff have considered the key considerations under the Significance and Engagement Policy, in particular sections 7 and 8 and have assessed that the matter(s) in this report has a *medium* level of significance.

The draft RMP has had good community engagement through the project focus group, public events and public notification.

Mana whenua partners have been involved in the development via focus group participation and hui with Pūrekireki Marae.

All legal requirements of public consultation of the draft RMP were met, except due to an oversight, the Department of Conservation was technically formally notified of the draft RMP later than required under the Act. However, representatives of the Department attended a community engagement meeting on the draft RMP, and provided a submission on the draft RMP within the consultation timeframe.

Therefore, there was no detrimental impact on the Department of Conservation’s ability to contribute to the development of the draft RMP.

6 OTHER CONSIDERATIONS – HEI WHAIWHAKAARO

Legal and Policy Considerations – Whaiwhakaaro ā-Ture

The reserve is Crown-owned land with Waipā District Council appointed as the reserve’s administering body. Pursuant to section 41(13) of the Act, the Minister’s consent is not required for approval of any reserve management plan for this reserve.

Staff confirm that the recommendations provided are in line with the Act, of which this parcel of land is subject to, except for the minor discrepancy with the timing of the notice to Department of Conservation, as noted above.

Section 41(3) of the Act requires that a reserve management plan must provide for the use, enjoyment, maintenance, protection, and preservation, as the case may require, and (to the extent that the administering body’s resources permit), the development, as appropriate, of the reserve for the purposes for which it is classified. It must also incorporate and ensure compliance with the principles set out in section 17 of the Act. The draft RMP was developed in line with these requirements.

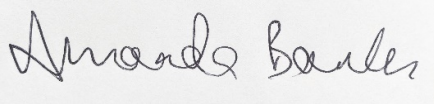
Section 41(6) of the Act sets out multiple requirements for public notice, access to the draft RMP and the opportunity to be heard in support of a submission. Council have provided public notice both in relevant newspapers and online and provided physical copies of the draft RMP at Te Awamutu Library and Council office. This hearing allows submitters to be heard in support of their submission, should they wish.

7 NEXT ACTIONS

Staff will amend the draft RMP as per the Strategic Planning and Policy Committee’s direction, and, if approved, will arrange for the final RMP to be published.

8 APPENDICES – ĀPITITANGA

No:	Appendix Title
1	Draft Sainsbury Road Reserve Management Plan 2023 (document number 10970936)
2	All Submissions and staff recommendations to draft Sainsbury Road Reserve Management Plan (document number 11032536)



Written by Amanda Banks
CONSULTANT – LIGHTNING ROD CONSULTANCY



Approved by Brad Ward
MANAGER COMMUNITY SERVICES



Approved by Sally Sheedy
GROUP MANAGER CUSTOMER & COMMUNITY SERVICES

Waipā District Council

Te Mahere Whakahaere o Sainsbury Road Reserve - Hukihuki

Sainsbury Road Reserve Management Plan - Draft



MIHI FOREWORD

Mihi or whakatauki to be gifted by mana whenua for the final document.

Foreword to be completed for final plan.

Photo not taken at the Sainsbury Road Reserve.

NGĀ IHIRANGI CONTENTS

SECTION ONE:
Introduction
PAGE 2

SECTION TWO:
Sainsbury Road
Reserve in context
PAGE 4

SECTION THREE:
Vision, goals and
policies for Sainsbury
Road Reserve
PAGE 13

SECTION FOUR:
Implementation
PAGE 22

Wāhanga Tuatahi: **Kupu Whakataki**

Section One: **Introduction**

Purpose of this plan

The purpose of this reserve management plan ('the plan') is to provide guidance and direction on the management of Sainsbury Road Reserve ('the reserve')¹ – located at 205 Sainsbury Road, Pirongia – to enable a range of recreational, environmental and cultural aspirations to be realised.

While it is primarily a plan to guide Council's planning, funding and management approach for the reserve, it is also useful to mana whenua, recreational and environmental organisations and the wider community as it outlines the community's recreational, cultural and ecological aspirations for the reserve.

One of the key purposes of the Reserves Act 1977² ('the Act') is to ensure there are areas across New Zealand where people can enjoy the outdoors. People enjoy the outdoors in a variety of ways: their recreational activities can be active (running, walking, cycling, horse riding, ecological restoration) or passive (quiet contemplation, sightseeing, picnicking) – or anything in between.

More specifically, the purpose of a recreation

reserve³ is to protect the natural environment and beauty of the countryside and retain wide open spaces and tracks which enable people to explore these special places. The features of historic, scenic and ecological significance are to be managed and protected. Managing these features often enhances people's experience of recreation reserves.

The Act outlines the requirements of reserve management plans⁴: how they are developed, the issues they need to address, how Council should engage with the community and how the community can shape the plan. This plan has been developed in accordance with these requirements.

¹ Part Section 336, Town of Pirongia West.

² Section 3 (General Purpose) of the Reserves Act 1977.

³ Section 17 (Recreation Reserves) of the Reserves Act 1977.

⁴ Section 41 (Management Plans) of the Reserves Act 1977.

Structure of this plan

Section One provides a brief outline of the purpose of the reserve management plan and the scope of the plan.

Section Two provides contextual information about the reserve. It discusses the location of the reserve, its history, some of the special places on or near the reserve and its current state. The challenges and opportunities of the reserve are also discussed.

Section Three outlines the vision for the reserve, and the goals and policies which will assist in delivering on the vision. Explanations for the goals and policies are provided in order to demonstrate the rationale for the approach taken.

Section Four covers the implementation of the plan, of which the landscape concept plan is the main component.

Scope of this plan

The reserve is one of five land parcels which collectively comprise the Pirongia West Recreation Reserves⁵. Following the termination of the perpetual grazing lease on the reserve in 2014, Council resolved to develop a standalone reserve management plan to better deliver on the principles relating to recreation reserves outlined in the Act.

While the four remaining land parcels in the Pirongia West Recreation Reserves are currently subject to perpetual leases, Council has a long-term vision to review the function and management of these parcels to ensure they are meeting their purpose as recreation reserves and the relationship between them is recognised.

⁵ As identified in the Urban Reserves Management Plan Volume 2 (Pirongia, Kihikihi and Ohaupo) 2006.

Photo to be inserted for final RMP

Wāhanga Tuarua: Sainsbury Road Reserve te horopaki

Section Two: Sainsbury Road Reserve in context

Sainsbury Road Reserve in context

Historical context

There is a long and varied history of human occupation in the Pirongia area within which the reserve sits.

Patupaiarehe (forest folk) pre-date Māori. They lived in the deep forest of Mount Pirongia long before the arrival of Māori in the Tainui waka in Kawhia around 800 years ago, and according to mana whenua are still present on the mountain.

Once settled in Kawhia, the Māori population expanded and journeys were made further inland in search of resources. Mount Pirongia was an

area rich in resources: plentiful water, food such as freshwater mussels and eels, forest birds, berries and plants and trees which could be used for buildings⁶.

Mount Pirongia is of great significance to Ngāti Apakura and Ngāti Hikairo, who are mana whenua of the area.

Acquisition history of the reserve and historical land management

In 1863, the Waikato region was invaded by European soldiers and approximately 1.2 million acres was confiscated from Māori. The raupatu

(confiscation of land) in the Waikato region had a devastating impact on Māori. Large tracts of land in the wider Pirongia area were confiscated, and the reserve is part of a package of reserves which came to be in Crown management under the Public Domains Act in 1881⁷.

The raupatu brought about a significant step change in land management. Within the flatter areas surrounding Mount Pirongia, much of the forest was cleared for agricultural purposes. It is likely that the reserve was farmed, and in recent years, it has been used for grazing cattle.

⁶ Crown land set apart as recreation ground by NZ Gazette 1888 p.677. Brought under The Public Domains Act 1881 by NZ Gazette 1888 p.707 and added to the Pirongia Domain by NZ Gazette 1905 p.1250. - under the control of the Pirongia Domain Board. The Pirongia Domain Board became the Pirongia Recreation Reserves Board on 1 April 1978 by operation of S.16(7)

of the Reserves Act 1977. Administration passed from the Board to the Waipa District Council by operation of Clause 77-79, the Local Government (Waikato Region) Reorganization Order 1989 (NZ Gazette 1989 p.2460).

Planning context

The reserve primarily sits within the Reserve Zone under the Waipā District Plan 2016 ('District Plan'). Two District Plan policy overlays also cover the reserve. The Indigenous Forest Biodiversity Corridor⁸ overlay seeks to retain the ecological values associated with the unprotected forested lower slopes of Mount Pirongia in order to increase native vegetation cover in the Waipā District. The Visually Sensitive Hill Country Zone⁹ overlay recognises that the area provides a rural visual backdrop to large parts of the Waipā District. In the wider context, the site is located on the foothills of Mount Pirongia which is identified as an Outstanding Natural Feature and Landscape.

There are also small areas of the reserve which fall outside of the Reserve Zone. Some of the reserve is within the road corridor (and therefore unzoned), while some of the land is within the Rural Zone. See Figure One for a spatial representation of the reserve's planning context.

⁸ Waipā District Plan Clause 24.2.4 and Objective 24.3.2: To maintain and enhance indigenous biodiversity, ecological processes and connectivity within the biodiversity corridors as identified on Planning Map 49.

⁹ Waipā District Plan Objective 25.3.4: To provide for lawfully established farming activities while ensuring the location of buildings, driveways and infrastructure does not compromise and where practicable enhances the landscape qualities of visually sensitive hill country and river and lake environs.



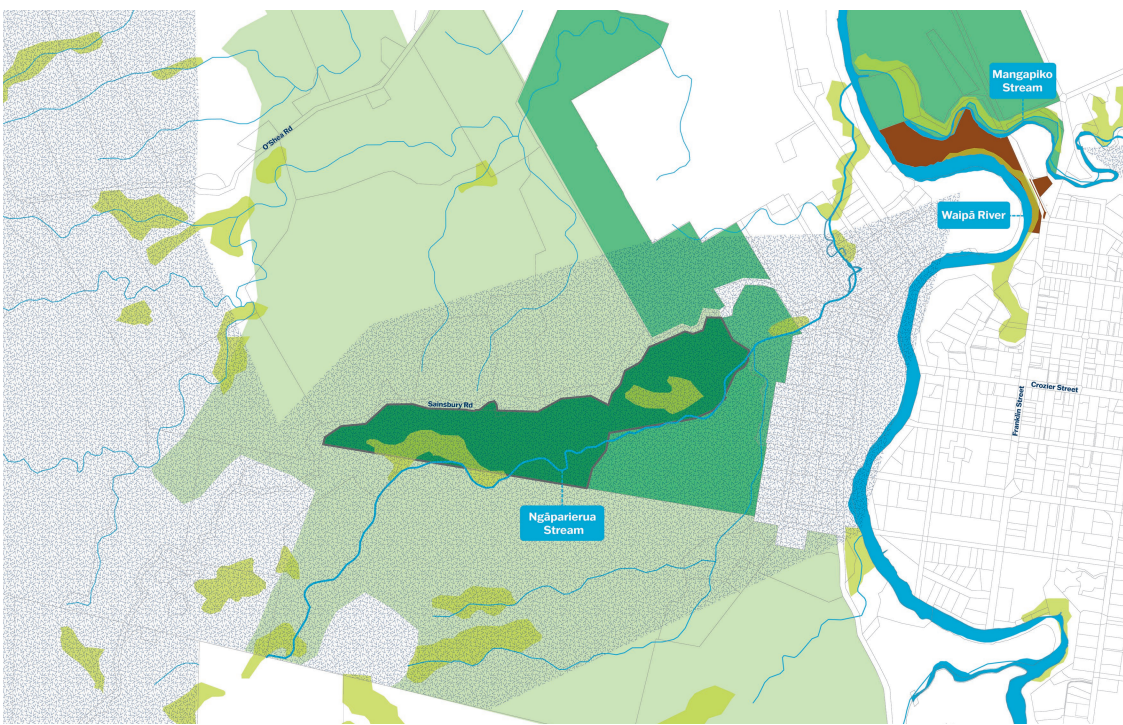


Figure One: Location of Sainsbury Road Reserve and spatial representation of the planning context
 Streams Visually sensitive hill country Parcels reserves areas Pirongia West Recreation Reserve
 Indigenous forest corridor Mātakitaki Pā site Sainsbury Road Reserve
 Version: 5, Version Date: 27/02/2023

Sainsbury Road Reserve – site specific context and current use

The reserve (see Figure Two) is located at 205 Sainsbury Road, Pirongia and is classified as a recreation reserve under the Act¹⁰. Recreation reserves are places where recreational opportunities are provided for and cultural and ecological features and systems are protected and enhanced.

The reserve is approximately 41 hectares in area and is mostly steep terrain. Given the hilly terrain, there are a number of vantage points on the reserve which provide clear sight lines to Mount Pirongia, Mount Kakepuku and Maungatautari and Pirongia township.

Ngāparierua Stream is a defining natural feature in the reserve. The stream starts in the foothills of Mount Pirongia and runs through the reserve for a distance of approximately 680 metres and joins the Waipā River opposite Mātakitaki Pā. There is also a small wetland (2.6 hectares in size) located at the north-eastern end of the reserve.

The reserve is mostly grassed in pasture, with small pockets of remnant native forest, gorse, old pine trees and a small selection of fruit trees. Aside from individual native trees on the reserve, there is a remnant of native vegetation (4.9 hectares in size) located near the Ngāparierua Stream corridor. The current lessees graze significant portions of the reserve, which greatly aids in pasture and pest weed management.



¹⁰ Section 17 of the Reserves Act 1977. The reserve was classified recreation reserve in the NZ Gazette in 1981 p.345 (Document H.330702).

Remains of the historic water supply infrastructure (including a hand-dug reservoir with internal ladder) are present on the reserve. At one stage, the Ngāparierua Stream supplied Pirongia township with all its water. The original water main is still in situ.

There are a number of recreation tracks (which are also used by grazing stock) across the reserve which provide access for horse riders and walkers, although some areas are degraded and unsafe for horse riding in the winter months. The reserve has minimal recreational infrastructure but does have horse washdown facilities near the entrance. Council does not currently hold any information on numbers of visitors to the site, but anecdotal evidence indicates that it is well used by the horse riding community.

The reserve sits within the context of a wider network known as the Pirongia West Recreation Reserves. This includes the two sites which immediately adjoin the eastern boundary of the reserve, as well as the land to the north of the reserve (across Sainsbury Road). These sites are owned by Council and have been classified as recreation reserve under the Act.

These adjoining land parcels are currently subject to lease arrangements which constrain the ability to plan for significant changes to their existing use. Notwithstanding that, these land parcels are considered to make up a connected network of reserves for which Council has aspirations to holistically manage as future lease arrangements allow.

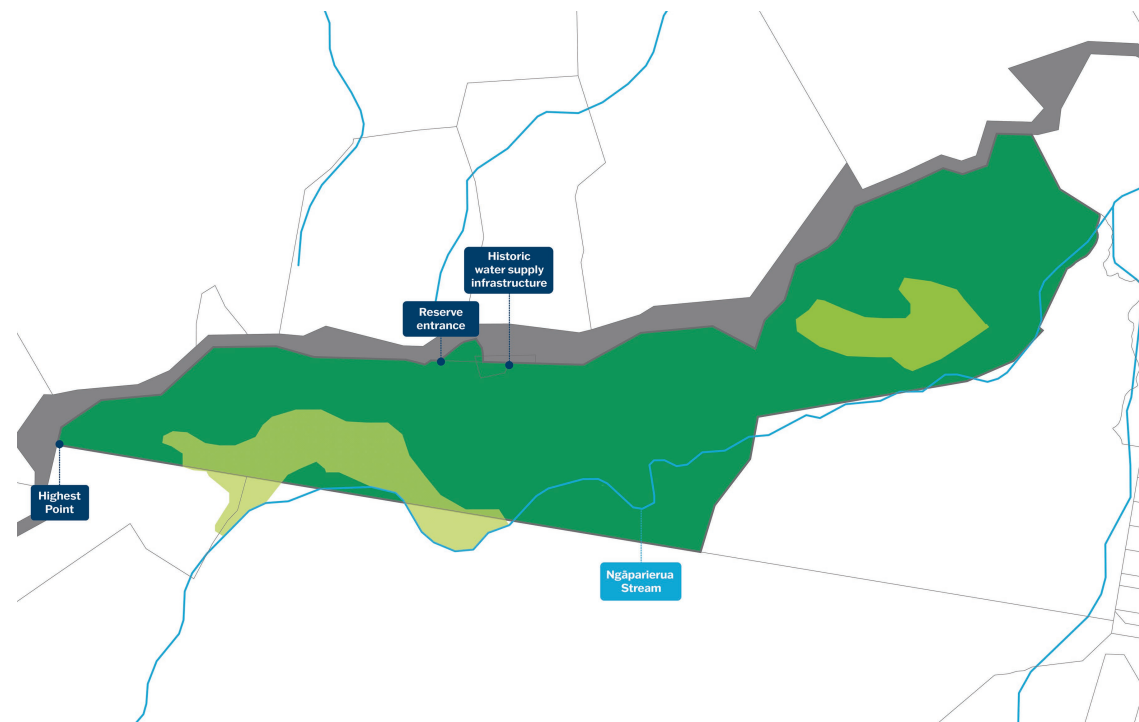


Figure Two: Sainsbury Road Reserve - 205 Sainsbury Road, Pirongia

Streams Native forest Sainsbury Road Reserve Road corridor



Challenges and opportunities at the reserve

There are a number of challenges to be addressed – and opportunities to be pursued – in planning for and managing the reserve. These challenges and opportunities have been identified through three primary sources:

- **Existing Council information about the reserve** (such as Council reports, current reserve management plans, the expertise of Council staff, environmental information (including soil stability and quality, water quality and ecological data) and research papers);
- **Community conversations** (such as community feedback on the initial landscape plan options developed in 2015, a survey of horse riders undertaken by the Pirongia Horse Riders Club in 2020, discussions with the current graziers, workshops held with the Sainsbury Road Reserve Focus Group in 2022/23 and submissions from the community on the draft plan);
- **Legislative guidance** (such as the requirements for recreation reserves outlined in the Reserves Act 1977, the Vision and Strategy for the Waikato River, iwi management plans^{11,12,13} and relevant Waipā District Plan objectives and policies).

¹¹ Waikato-Tainui Environmental Management Plan.

¹² Maniapoto Priorities for the Restoration of the Waipā Catchment NIWA Client report (waikatoregion.govt.nz).

¹³ Ngāti Hikairo Iwi Management Plan – Freshwater Ngāti-Hikairo.pdf (waikatoregion.govt.nz).

Ecological health and function at the reserve

Vegetation cover

While there are small pockets of remnant native vegetation, the majority of the reserve is in pasture cover. Due to minimal native forest cover, the overall ecological health of the reserve is poor¹⁴.

However, the proximity of Mount Pirongia (which has extensive native forest cover) presents an ideal opportunity to re-establish a strong ecological corridor through the reserve. Research indicates that long-tail bats are present on Mount Pirongia, and increasing native vegetation on the reserve would provide more bat habitat and food sources.

The connection of Ngāparierua Stream to the Waipā River is the logical priority for revegetation which would have multiple environmental, cultural and recreational benefits. The establishment of the Taiea te Taiao Ecological Corridor Project¹⁵ amplifies the collaborative opportunities to undertake ecological restoration on the reserve. Future ecological restoration opportunities with a similar focus are likely to assist in improving native vegetation cover on the reserve.

Additionally, conversations with the local community indicate that there is strong interest in being involved in projects which are focused

on restoration planting and pest control at the reserve.

Current land use

Grazing stock is the current land use across much of the reserve. While grazing is appropriate across the rolling terrain, it has resulted in localised soil stability issues on some of the steeply contoured areas of the reserve.

However, grazing stock play an important role in weed management and prevents pest plant species from becoming dominant across the reserve. There is an opportunity to adjust the grazing approach, which will contribute to improving soil stability. There is also the opportunity to retire the steeper areas of the reserve and undertake ecological restoration to assist with soil stability.

Additionally, there is the potential for future commercial activities to provide an income stream to assist in managing the reserve. These activities could include selective native and exotic forestry.

Stream health

Despite the lack of native vegetation cover along the majority of the Ngāparierua Stream corridor, the water clarity is high. This is likely to be a result of the close proximity of the Ngāparierua Stream

headwaters, which is approximately 1700 metres upstream from the reserve boundary.

While there is an absence of existing information on the aquatic species present in the stream, ecological information from nearby streams indicates the presence of longfin eel, inanga, short jaw kokopū and freshwater kōura species¹⁶.

There is an opportunity to improve the Ngāparierua Stream health through revegetating the stream corridor, reintroducing native aquatic species into the stream and re-establishing traditional food sources (including watercress).

¹⁴ Waipā District Council ECM Doc #10452647 Ecological Significance Assessment of Forest Remnants at 471 Sainsbury Road, Pirongia.

¹⁵ The aim of the Taiea te Taiao Ecological Corridor Project is to link two of the Waikato region's most spectacular maunga, Maungatautari and Pirongia, via an ecological corridor between the waterways which flow from the two maunga – the Mangapiko and Ngāparierua streams. The project is funded by the Ministry for the Environment's Freshwater Improvement Fund for a five-year period (June 2021 to June 2026).

¹⁶ Waikato Regional Council Technical Report 2013/16 Significant natural areas of the Waipa district: terrestrial and wetland ecosystems Waipa SNA Report final (waikatoregion.govt.nz). Sourced 9 December 2022.

Recreation use at the reserve

Fence and track infrastructure

Horse riders have identified the reserve as an ideal location for riding which has additional future potential if infrastructure is improved. This is particularly important given the lack of off-road areas in the Waipā District on which to ride. A survey conducted in 2020 of 70 horse riders in the Waipā District and beyond¹⁷ identified that 58% riders do not have other farmland available to ride on.

The existing fence and gate infrastructure and current standard of the riding tracks compromise the current safety and useability of the reserve for horse riding.

Additionally, the absence of 'loop tracks' (instead of the existing 'dead end' tracks) constrains capacity and limits the potential for more riders to use the reserve. The lack of educational and way-finding signage and information also creates confusion and limits current and future recreational use by horse riders and walkers.

User experience

The reserve's location in the foothills of Mount Pirongia offer impressive views to Pirongia township, Mount Kakepuku, Maungatautari and the wider landscape. Community feedback

indicates that installing look-out points and way-finding signage and increasing the visibility of historical information and stories about the land and its people would greatly enhance people's experience at the reserve and create a deeper connection to the area.

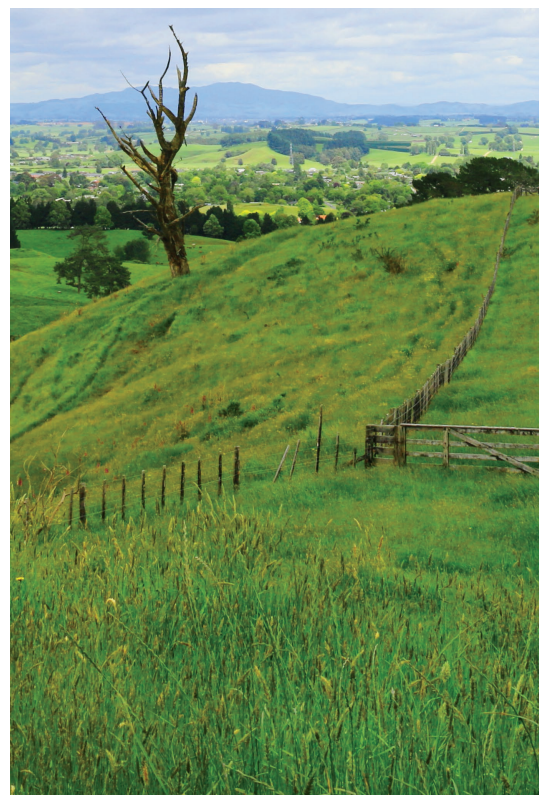
Finally, while not directly associated with the reserve, there are road safety issues in the localised area. Sainsbury Road (where the reserve is located) is a winding rural road with limited sight lines and has a wide range of road users – horse riders, pedestrians, tractor drivers, cyclists, horse float drivers, residents and people visiting the Pirongia Mountainbike Park. These users travel at variable speeds and use the road in very different ways.

While all road users will need to use the road safely, there is an opportunity to consider alternative access points to the reserve which may assist in addressing some of these road user conflicts and safety concerns.

The vision, goals and policies in Section Three have been designed to address these challenges and opportunities, make progress on achieving the community's aspirations for the reserve and fulfill Council's legislative obligations.



Photo not taken at the Sainsbury Road Reserve.



*Wāhanga Tuatoru:
Te Whakakitenga,
ngā whāinga, me ngā
kaupapa here*

Section Three:
**Vision, goals
and policies**

Introduction

The vision, goals and policies outlined in this section achieve the legislative requirements of a reserve management plan¹⁸ and deliver on the community's aspirations which were shared throughout this process.

The vision for the reserve is a short, sharp statement which provides a clear call to action. A description of the future state which Council and the community can set their sights on achieving is also provided.

The goals and associated policies outline the areas in which progress will be made. Each goal and set of policies includes an explanation, which provides a rationale for the decided course of action.



¹⁸ Section 41 (Management Plans) of the Reserves Act 1977.





Photo not taken at the Sainsbury Road Reserve.

WHAKAKITENGA:
***Matomato te
whenua, kapakapa
te tangata, e ko
Sainsbury Reserve***

VISION:
**Nature and people
flourish at Sainsbury
Reserve**

What the future looks like

A green ribbon of lush native forest winds its way through the reserve and nourishes all living beings who visit.

The forest – which has been lovingly restored by the community – is home to birds, bats and insects. Tui, kōkako, kererū and piwakawaka feast in the abundant forest.

The Ngāparierua Stream flows cool and clear through the reserve to the Waipā River. The stream is thriving, and children and adults alike spend time connecting with the life in it and gathering food to nourish themselves and their families.

The reserve is a place of challenge, strength, achievement and restoration for people. Horse riders, walkers, runners, sightseers and people involved in restoring the native forest enjoy being at the reserve together.

People's connection to the reserve deepens as they share stories from the past and create new memories for future generations.

Ngā whāinga me ngā kaupapa here

Goals and policies

Whāinga Tuatahi: He tāmata i te ngahere taketake kia kaha ake te pakari me te mārohirohi.

Goal One: **Restore native forest to improve nature’s strength and resilience.**

Policies

- Develop and implement an ecological monitoring programme for the reserve which incorporates Mātauranga Māori approaches, Western science and citizen science
- Develop and implement a restoration plan which prioritises the enhancement and expansion of existing forest remnants, the revegetation of the Ngāparierua Stream corridor and allows for future cultural harvest
- Undertake animal and plant pest management which protects existing forest remnants and future restoration planting.
- Construct stream crossings which protect and enhance bank stability and improve the ecological function of Ngāparierua Stream and assist in maximising recreational opportunities at the reserve.

Explanation

Developing an integrated monitoring programme from a range of disciplines will ensure that a holistic picture of the ecological health of the reserve is captured. The monitoring programme will establish an environmental baseline for the reserve in order to track improvements over time.

The restoration plan will implement various aspects of the landscape concept plan. The restoration plan will use Western science and indigenous restoration approaches to provide clear guidance on the priority areas, species to be planted (including species for rongoa/ medicine, future cultural harvest for carving, pou and waka and kai/food), areas to be fenced off and the required maintenance programme.

Restoring native forest on the reserve has two primary benefits: it will improve the ecological function of the reserve and enhance people’s experience of the reserve.

Prioritising restoration planting along the Ngāparierua Stream corridor will assist in improving stream health by providing shade and managing sediment. Shaded streams have more stable water temperatures which provide ideal habitat for aquatic species, while riparian planting decreases the sediment runoff into waterways. Improving the health and wellbeing of the Ngāparierua Stream also makes a tangible contribution towards achieving the Vision and Strategy for the Waikato River¹⁸.

Restoring the Ngāparierua Stream corridor would also extend the food source which Mount Pirongia currently provides for birds and insects, thus enabling them to expand their habitat range. In seeking out food from their expanded habitat, bird species will be able to fulfil their role as seed dispersers. This will further contribute to the health and resilience of the forest on the reserve.

Whāinga Tuarua: Goal Two:

Policies

- Support and enable community restoration initiatives which prioritise planting the Ngāparierua Stream corridor and enhancing and expanding existing forest remnants
- Support community pest control initiatives which improve the ecological health of existing forest remnants
- Collaborate with existing restoration initiatives which focus on improving the health and wellbeing of the Ngāparierua Stream
- Explore a range of funding opportunities – in partnership with the community – to implement the restoration plan
- Investigate income generation opportunities which assist in delivering on ecological and recreation outcomes.

Explanation

There is strong community interest in restoring native forest on the reserve, both to improve its ecological health and improve the experience for those using the reserve. Community restoration activities improve social cohesion as they build people’s connections to the land and to each other. At an individual level, restoration work builds physical strength, resilience and stamina. Prioritising the restoration of the Ngāparierua Stream corridor first will create opportunities for people to connect with the stream, while enabling the restoration work to be sustainable over time.

Pest control is a vital aspect of improving the ecological health of forest remnants. Supporting pest control initiatives which are focused on existing forest remnants will also ensure that additional planting will flourish and further improve the resilience of these special places.

Partnering with existing restoration initiatives (such as the Taiea te Taiao Ecological Corridor Project) will create opportunities to amplify improvements to the ecological health of the

Ngāparierua Stream. Working with others will also strengthen the ecological resilience of the broader landscape as forest corridors will increasingly become pathways for birds, bats and insects to extend their habitat range.

Exploring a range of funding opportunities from a range of organisations (including local, regional and central government, the commercial sector and philanthropic organisations) to undertake restoration work may enable some restoration plan implementation costs to be offset. Additionally, investigating income generation opportunities such as carbon credits and selective native and exotic tree harvest may create revenue streams which align well with the goals of the plan.

Taking a partnership approach – where Council and the community share the challenge of seeking funding and resourcing – enables them both to take responsibility for improving the reserve.

¹⁸ The Vision and Strategy for the Waikato River (Schedule 1 – Ngā Wai o Maniapoto (Waipā River) Act 2012) is the primary direction setting document for the Waikato River.

Whāinga Tuatoru: **Kia maha ngā āheinga whakamahi mō ngā kaiwhakamahi puta noa.**

Goal Three: **Maximise recreational opportunities for a range of users.**

Policies

- Work with the horse riding community to develop a track construction programme which maximises recreation and ensures the safety of all reserve users
- Support community initiatives which are focused on implementing the track construction programme
- Investigate the potential for a secondary vehicle entrance in the lower area of the reserve
- Develop infrastructure at the reserve to provide multiple spaces for passive recreation
- Implement a long-term, 'sinking lid' approach to grazing at the reserve.

Explanation

Working with the horse riding community to develop a track construction programme which includes identifying opportunities for loop tracks, appropriate grades for safe riding and easy to use gate infrastructure will maximise the useability of the reserve for horse riding.

The track construction programme will also contribute to improving the recreational experience for walkers and runners who use the reserve. Supporting community initiatives which will implement the track construction programme creates a sense of connection with the reserve.

Community feedback indicated that the most appropriate recreational uses of the reserve are horse riding, walking/running and passive recreation. However, an off-road cycle track on the roadside boundary of the reserve was deemed an appropriate balance of recreational activities which adequately address the safety of all reserve users.

A secondary vehicle entrance in the lower area of the reserve may assist in addressing local road safety concerns. It would also provide access to

the wetland area on the reserve, which provides a different recreation experience from the upper areas of the reserve. Furthermore, the additional vehicle entrance would provide an entry point to access an 'up and back' loop of the entire reserve which would be of great benefit to horse riders.

The reserve has impressive views of the local landscape, including Maungatautari, Mount Kakepuku and Mount Pirongia. Developing infrastructure which enables passive recreation – viewing platforms, picnic areas and places to sit by the stream – creates opportunities for people to meet a range of spiritual, cultural and recreational needs.

Implementing a long-term, 'sinking lid' grazing approach ensures that weed management is continued as forest restoration is expanded across the reserve. It also provides clarity of timeframes for the existing graziers. The first phase of this approach is to work with the leaseholder to review the grazing approach for optimal pasture management and to contribute to improved soil stability.

Whāinga Tuawhā: **He tūhonohono i te tangata ki te whenua rāhui me te whakapiki i ōna wheako.**

Goal Four: **Enhance people's connection with and experience of the reserve.**

Policies

- Partner with mana whenua to ensure Māori history is visible across the reserve
- Partner with mana whenua to develop a name for the reserve which reflects the local history and ecology
- Work with the local community to ensure local stories are represented across the reserve
- Develop and install way-finding and track sharing signage to improve the experience of people visiting and using the reserve.

Explanation

Stories about the landscape – from a range of perspectives – enable people to connect more deeply with places and appreciate the importance of their own stories. The reserve and the broader landscape it sits within has a rich Māori and European history. Ensuring these stories are told throughout the reserve in a range of ways (such as story boards and pou/special carvings) enable people to connect with the past and lead to a better understanding of the present.

Working with mana whenua to develop a name which better reflects the first inhabitants of the area, and the connection between people and place over time, will help to create a distinct identity for the reserve.

Infrastructure such as viewing platforms create powerful prompts to tell stories about place, while way-finding signage enables those using the reserve to create new stories and memories to share with others.

Photo to be inserted for final RMP

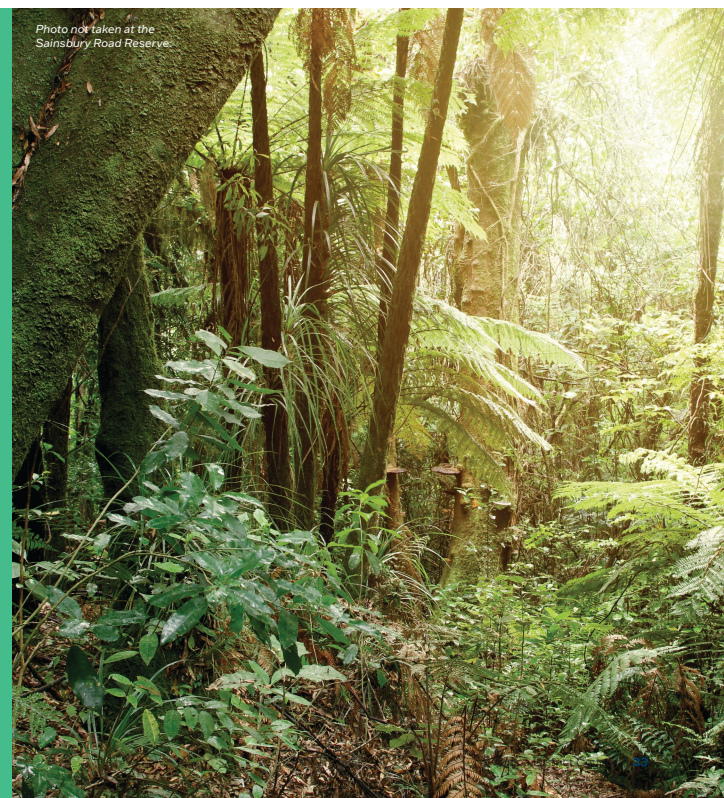


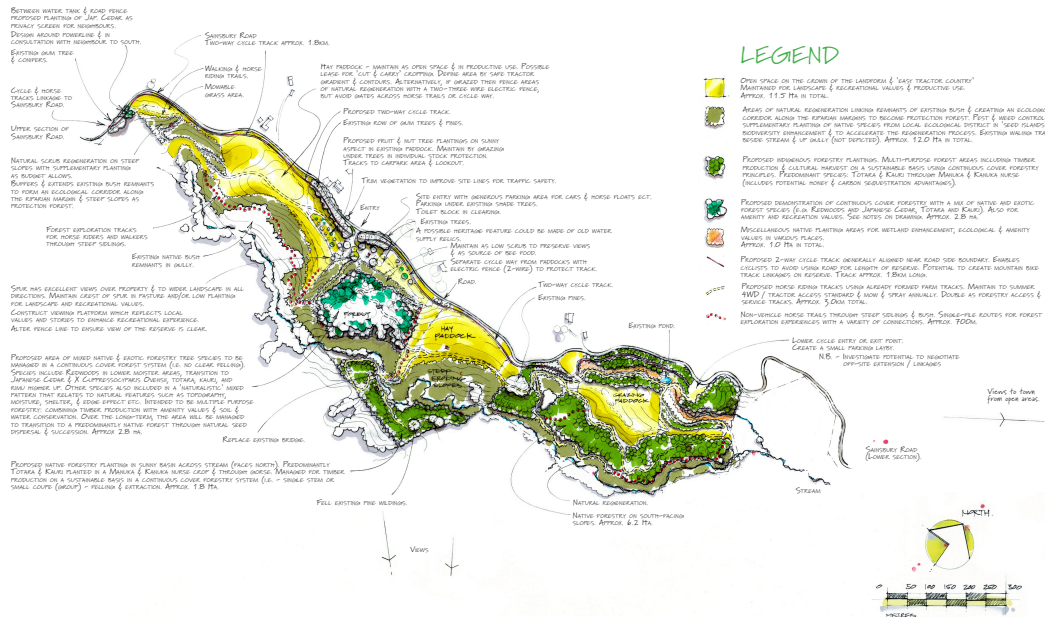
Landscape Concept Plan

The landscape concept plan provides a broad visual outline of what is required to make progress on the vision, goals and policies outlined in Section Three. The landscape concept plan is purposefully broad – detailed planning will be needed to implement its discrete components and ensure that there is a clear line of sight to the vision, goals and policies. Where directed in the policies, Council will work with the community to develop various implementation aspects.

Council's Long-Term Plan and Annual Plan processes (which includes both capital projects and operating and maintenance budgets) are the mechanisms for funding by local government.

For digital version of the landscape concept plan click [here](#)





SAINSBURY ROAD RECREATION RESERVE PIRONGIA

DRAFT LANDSCAPE CONCEPT PLAN

FEB. 2023

PREPARED BY TRAVIS TERRY IN CONSULTATION WITH PAUL GUNN AND LANDSCAPE ARCHITECT LIZ HAYES
 PREPARED AS A CONSULTATION DOCUMENT FOR THE DRAFT PROJECT PLAN
 Document Set ID: 10970936
 Version: 5, Version Date: 27/02/2023



Head Office 07 872 0030 • 101 Bank Street, Private Bag 2402, Te Awamutu 3840

Cambridge Office 07 823 3800 • 23 Wilson Street, Cambridge 3434

0800 WAIPADC (924 723)

waipadc.govt.nz

 [/WaipaDistrictCouncil](https://www.facebook.com/WaipDistrictCouncil)

 [/Waipa_NZ](https://www.instagram.com/WaipaNZ)

 [/Waipa_DC](https://twitter.com/WaipDC)



SUMMARY OF SUBMISSIONS

Submission Points:

- **The Vision: Nature and people flourish at Sainsbury Reserve**
- **Goal One: Restore native forest to improve nature's strength and resilience.**
- **Goal Two: Enable people to care for and restore nature.**
- **Goal Three: Maximise recreational opportunities for a range of users.**
- **Goal Four: Enhance people's connection with and experience of the reserve.**
- **Landscape Concept Plan**

Staff recommendations on page 14, as in hearing report (document number 11011072)

#	Name / Organisation	Submission	Staff Recommendation
1	Sarah Rice Acre computer services ▪ Support	Vision: Support. Protecting and enhancing places of natural beauty is a worthy goal. Goal One: Support Goal Two: Support Goal Three: Support. Wonderful. The horse riding community needs many more spaces to ride and this proposal has been well thought out. I suggest riders and contractors take a look at the recently opened Waitekohekohe park in Western Bay of Plenty as it is also quite steep in parts. It offers a range of loops of varying steepness, a river crossing, a 200m lane of logs to jump. Horses can cope with steep slopes and riders benefit from the experience of riding up and down challenging terrain. The next Olympic Eventing Champion will not have spent their lives doing circles in arenas Goal Four: Support. Enhancing any traditional trails through the park and then educating users about the history of them is a wonderful way for users to appreciate and respect the land they are walking or riding over. Concept Plan: Support Additional comments: My general view is that the more user groups you can include, the more successful the park can be. This comes with the caveat that user groups need to be respectful of each other and play nicely together. Signs educating cyclists to 'Say hi to horse riders' so that they don't approach silently and spook horses are a good idea.	<i>Council thanks the submitter and acknowledges the submission. No further action required.</i>
2	Kelly Wolfe Wolfe Dogs ▪ Support / Neutral	Vision: Neutral Goal One: Support Goal Two: Support Goal Three: Support Goal Four: Support Concept Plan: Support Additional comments: Would love to see inclusion of dogs in the area for accessible recreation. Could be on lead, specific areas etc. Signage showing where stock is to exclude access to that, and/or a permit option. There is a lack of suitable options for hiking with dogs in the area and this is a great potential area that could be opened up to responsible owners looking to fulfil their dogs more appropriately. Look at Bottle Lake Forest (Christchurch) and Waiuku Forest (Waikato) for good examples of spaces being shared responsibly.	<i>Council thanks the submitter and acknowledges the submission. Staff note that Council's Dog Bylaw is the primary policy for the presence of dogs on reserves. Currently, Sainsbury Road Reserve is a dog on-lead area.</i>
3	Cayla Rohrlach ▪ Support / Neutral	Vision: Neutral. Dog on leads need to be included Goal One: Neutral Goal Two: Support Goal Three: Support Goal Four: Support Concept Plan: Support Additional comments: Dogs on leads. Even if permits are required should be allowed	<i>Council thanks the submitter and acknowledges the submission. Staff note that Council's Dog Bylaw is the primary policy for the presence of dogs on reserves. Currently, Sainsbury Road Reserve is a dog on-lead area.</i>

#	Name / Organisation	Submission	Staff Recommendation
4	Amanda Eady ▪ Neutral / Support	Vision: Neutral Goal One: Support Goal Two: Support Goal Three: Neutral. I don't have an issue with the proposed roadside cycle way since it is separated. Currently walkers are not commonly seen/ the tracks are unobstructed, so as a horse rider there is concern that obstruction with plantings would be a risk running someone over. The ability to have a good trot and canter in the park without having to worry about running anyone over is unique to the reserve. It is important to retain for both horses health, improving rider ability and confidence and provide a fitness training platform for those who do not have access to a large acreage of land. Dogs should only be allowed to be walked via the cycle pathway on lead only for the same reasons. / No dogs allowed on horse recreation trails. Low plantings to allow for unobstructed view in shared trails with walkers Goal Four: Neutral Concept Plan: Neutral. See comments under 'Goal Three'. Additional comments: What are your thoughts on the reserve only being for people riding horses or on foot? It is and has been a very important recreational location for horse riders!	<i>Council thanks the submitter and acknowledges the submission.</i> <i>No further action required.</i>
5	Catherine Michelle Fransen ▪ Support	Vision: Support Goal One: Support Goal Two: Support Goal Three: Support. Particularly horse riders, as many people struggle to find off-road areas to ride, so this is a very valuable resource. Goal Four: Support. Track-sharing would need to be managed carefully to ensure the safety of walkers and bikers around horses and vice versa. Concept Plan: Support. Loop tracks would enhance enjoyment and usability. Also tracks being of a quality that all horses, shod or unshod, can go on i.e.. not gravel. Additional comments: Separate tracks for horse riders vs. walkers may enhance enjoyment for both parties - can be difficult to let horses trot or canter if expecting to come across walkers around a corner. There are many opportunities for walking on Mt Pirongia but far fewer places to ride so ideally riders would get priority! The idea of a separate track for bikers and horses is great.	<i>Council thanks the submitter and acknowledges the submission.</i> <i>No further action required.</i>
6	Shirley Dianne Meier ▪ Support / Neutral	Vision: Support Goal One: Support Goal Two: Support Goal Three: Support Goal Four: Support Concept Plan: Neutral Additional comments: Horse riders especially require places to ride plus walkers need good nature walks as well. We must give people opportunities to enjoy nature and their chosen sports - it is paramount for mental health.	<i>Council thanks the submitter and acknowledges the submission.</i> <i>No further action required.</i>
7	Arthur Darcy Meier ▪ Support	Vision: Support Goal One: Support Goal Two: Support Goal Three: Support Goal Four: Support Concept Plan: Support Additional comments: This is a hilly bit of land perfect for horses and people walking. It was originally handed to the council for HORSE use. Please continue with this request from the donor.	<i>Council thanks the submitter and acknowledges the submission.</i> <i>No further action required.</i>
8	Christine Coates ▪ Support	Vision: Support Goal One: Support. Would prefer all native plantings Goal Two: Support	<i>Council thanks the submitter and acknowledges the submission.</i> <i>The proposed cycleway project comprising an off-road cycleway running</i>

#	Name / Organisation	Submission	Staff Recommendation
		<p>Goal Three: Support</p> <p>Goal Four: Support</p> <p>Concept Plan: Support. Ideally reserve should be only for horse riders and pedestrians on foot (not cycles or motocross bikes). / Lower part of the block needs an access gate for horse riders to enter/exit (could be at same point where cycle track exits onto the road) so that people riding from lower Sainsbury Rd can enter block asap without riding on the road for another couple of km's before accessing the block via the main carpark. There is an entry/exit point at top of the block which is currently used (and being retained in the plan).</p>	<p><i>parallel to the road is indicative and is subject to detailed design and funding.</i></p>
9	<p>Hope Spooner</p> <ul style="list-style-type: none"> ▪ Support 	<p>Vision: Support. I would like it to be an awesome place for people to ride their horses</p> <p>Goal One: Support. I support this decision as long as it includes a wonderful trail space for horse riders</p> <p>Goal Two: Support.</p> <p>Goal Three: Support. Please make this a staple area to ride horse</p> <p>Goal Four: Support</p> <p>Concept Plan: Support</p>	<p><i>Council thanks the submitter and acknowledges the submission.</i></p> <p><i>No further action required.</i></p>
10	<p>Ange Carson</p> <p>Pirongia Horse Riders Club</p> <ul style="list-style-type: none"> ▪ Support 	<p>Vision: Support. Restoring native flora and fauna is very important. The vision to create a shared space for horse riders, walkers, runners and the wider community is urgently needed as there isn't any facilities like this. Currently riders will travel up to 2hrs to rider here and this will increase when it is better set up.</p> <p>Goal One: Support. Suggestions from riding community have included: putting mounting blocks next to traps so riders can easily reset them while on the reserve. Stream crossing would also improve recreational usability.</p> <p>Goal Two: Support. This project will move well with the ecological corridor project</p> <p>Goal Three: Support. Track upgrades are needed asap as tracks are damaged by cattle. Tracks will allow the planting and pest control to be done by 4wd. Tracks need to be linked up (a lot are dead ends currently) Cattle need to be kept off tracks</p> <p>Goal Four: Support. Wayfinding signage is an issue I hear from riders all the time. They don't know where they can & can't go.</p> <p>Concept Plan: Support. The plan is great. We need to ensure the bike track is properly thought through. It should be a track shared with walkers. Speed bumps would be needed as currently bikers love to race down the road.. Would downhill bikers use it at all? Cost vs effectiveness?</p> <p>Additional comments: Track upgrades are first priority. It will get more riders using the block. And will allow easier access for planting & pest control. At the moment tracks are pugged, slippery tomos, skips - dangerous for horses and walkers.</p>	<p><i>Council thanks the submitter and acknowledges the submission.</i></p> <p><i>No further action required.</i></p>
11	<p>Lesley Jane Kettle</p> <ul style="list-style-type: none"> ▪ Support 	<p>Vision: Support</p> <p>Goal One: Support</p> <p>Goal Two: Support</p> <p>Goal Three: Support</p> <p>Goal Four: Support</p> <p>Concept Plan: Support</p> <p>Additional comments: I would love for this reserve to only be for horses or people on foot. Somewhere safe for horse riders and foot traffic without the worry of traffic or motor bikes. The reserve Tect Park is an amazing example of what can be done. Thank you.</p>	<p><i>Council thanks the submitter and acknowledges the submission.</i></p> <p><i>No further action required.</i></p>
12	<p>Karin Watson</p> <ul style="list-style-type: none"> ▪ Neutral / Support 	<p>Vision: Neutral</p> <p>Goal One: Neutral</p> <p>Goal Two: Neutral</p> <p>Goal Three: Support</p> <p>Goal Four: Neutral</p> <p>Concept Plan: Neutral</p> <p>Additional comments: I would prefer if the area was only available to horse riders and walkers, but not to motor bikers and mountain bikers, as the wheels of bikes quickly cause ruts in the tracks, which are then a walking hazard for both horses and walkers on foot. Also walkers and horse riders are both mostly at a slow walking speed and are quiet (no motor noises, no fast approach), hence well suited to share the pathways, whilst bikers approaching at speed can frighten the horses and cause their riders having a fall. Motor bike engine noise</p>	<p><i>Council thanks the submitter and acknowledges the submission.</i></p> <p><i>No further action required.</i></p>

#	Name / Organisation	Submission	Staff Recommendation
		destroys the peace of the land and again can frighten the horses, plus the exhaust fumes can be very strong. One thing worth mentioning is that many horses these days are barefoot, as in not wearing metal shoes. This is an increasing trend for horse's health improvement, and also a big cost saving for owners. A barefooted horse, however, finds it very hard and painful to walk over stoney gravel paths. I would therefore like to ask to not try and "improve" the current beautiful soft clay tracks by placing any gravel. Gravel tracks would not only be a problem for barefoot horses, but also destroy the natural appeal of the area for walkers.	
13	Alison Lesley Cunningham Hamilton Adult riding club, Weekday Horse trekkers and Pirongia Horse Riding club. <ul style="list-style-type: none">▪ Neutral / Support	Vision: Neutral. I support original plans to create and beautify 205 for Horse riding in particular Goal One: Support. As long as horse riding still allowed Goal Two: Support. Same as aboe as long as horse riding not excluded. Goal Three: Neutral. Do not want mountain bikers to take over. Goal Four: Support Concept Plan: Neutral Additional comments: Support horse riding, walkers and dog walking on leads, can work together as done overseas , no problems.	<i>Council thanks the submitter and acknowledges the submission.</i> <i>No further action required.</i>
14	Sarina Clark <ul style="list-style-type: none">▪ Support	Vision: Support Goal One: Support. Recommend planting of native forest to improve birdlife / outlook. Goal Two: Support Goal Three: Support Goal Four: Support Concept Plan: Support Additional comments: I would love to see it developed for horses / walkers. I think the mountain bikers already have lots of area to use. It would be great to have some set tracks for each interest.	<i>Council thanks the submitter and acknowledges the submission.</i> <i>Staff recommend the RMP be amended to include native planting only.</i>
15	Jenny Chandler <ul style="list-style-type: none">▪ Support	Vision: Support Goal One: Support Goal Two: Support Goal Three: Support. improving the tracks and reducing grazing area will greatly enhance the recreational appeal to all groups. Currently grazing is important to keep grass under control but it does restrict usage and the stock damage the existing tracks. Goal Four: Support. I would love to learn more about the area and its history Concept Plan: Support Additional comments: The Mountain bike group have extensive tracks further up the mountain and so not require access to this block. It is not suitable for motorbikes. All aspects of the plan are important, possibly some pest control, both animal and plant would be necessary before planting I think fencing the stream while cattle still grazing is very important I would prefer all natives.	<i>Council thanks the submitter and acknowledges the submission.</i> <i>Staff recommend the RMP be amended to include native planting only.</i>
16	Sarina Clark <ul style="list-style-type: none">▪ Support	Vision: Support Goal One: Support. Primary natives planting would encourage bird life as well such as tui and fantails Goal Two: Support Goal Three: Support Goal Four: Support Concept Plan: Support Additional comments: Having this area primary for horses would be wonderful. There is already a lot of good areas for mountain biking and walking but less opportunity to ride in beautiful areas like this. Tracks will need some maintenance and some set trails are a great idea as a priority	<i>Council thanks the submitter and acknowledges the submission.</i> <i>Staff recommend the RMP be amended to include native planting only.</i>
17	Kay Whitehead <ul style="list-style-type: none">▪ Support	Vision: Support Goal One: Support	<i>Council thanks the submitter and acknowledges the submission.</i>

#	Name / Organisation	Submission	Staff Recommendation
		<p>Goal Two: Support</p> <p>Goal Three: Support</p> <p>Goal Four: Support</p> <p>Concept Plan: Support</p> <p>Additional comments: I agree with the reserve being for people on foot or horses. If you introduce bikes to the mix there is a much higher likelihood of accidents happening, trails may have to be changed or separated</p>	<p><i>The proposed cycleway project comprising an off-road cycleway running parallel to the road is indicative and is subject to detailed design and funding.</i></p>
18	<p>Stella Hansen</p> <ul style="list-style-type: none"> ▪ Support 	<p>Vision: Neutral</p> <p>Goal One: Support</p> <p>Goal Two: Support</p> <p>Goal Three: Support</p> <p>Goal Four: Support</p> <p>Concept Plan: Neutral</p>	<p><i>Council thanks the submitter and acknowledges the submission.</i></p> <p><i>No further action required.</i></p>
19	<p>Karen Rhind</p> <ul style="list-style-type: none"> ▪ Neutral / Support 	<p>Vision: Support</p> <p>Goal One: Neutral</p> <p>Goal Two: Neutral</p> <p>Goal Three: Neutral</p> <p>Goal Four: Neutral</p> <p>Concept Plan: Neutral</p>	<p><i>Council thanks the submitter and acknowledges the submission.</i></p> <p><i>No further action required.</i></p>
20	<p>Hewetson</p> <ul style="list-style-type: none"> ▪ Support 	<p>Vision: Support</p> <p>Goal One: Support</p> <p>Goal Two: Support</p> <p>Goal Three: Support</p> <p>Goal Four: Support</p> <p>Concept Plan: Support</p> <p>Additional comments: We need a safe place for people to ride horses</p>	<p><i>Council thanks the submitter and acknowledges the submission.</i></p> <p><i>No further action required.</i></p>
21	<p>Anna Cottington</p> <ul style="list-style-type: none"> ▪ Support 	<p>Vision: Support</p> <p>Goal One: Support</p> <p>Goal Two: Support</p> <p>Goal Three: Support</p> <p>Goal Four: Support</p> <p>Concept Plan: Support</p> <p>Additional comments: I would love to continue to ride there, we don't have many riding places available in the Waikato so this is a treasure. The kids spend a lot of time of their ponies just exploring the landscape.</p>	<p><i>Council thanks the submitter and acknowledges the submission.</i></p> <p><i>No further action required.</i></p>
22	<p>Rahna Campbell</p> <ul style="list-style-type: none"> ▪ Support 	<p>Vision: Support</p> <p>Goal One: Support</p> <p>Goal Two: Support</p>	<p><i>Council thanks the submitter and acknowledges the submission.</i></p> <p><i>The proposed cycleway project comprising an off-road cycleway running</i></p>

#	Name / Organisation	Submission	Staff Recommendation
		<p>Goal Three: Support</p> <p>Goal Four: Support</p> <p>Concept Plan: Support</p> <p>Additional comments: Yes I think it's very important to keep Sainsbury reserve for horse riding and walkers only ,there are not enough good places to ride</p>	<p><i>parallel to the road is indicative and is subject to detailed design and funding.</i></p>
23	<p>Marie Richards</p> <ul style="list-style-type: none"> ▪ Support 	<p>Vision: Support</p> <p>Goal One: Support</p> <p>Goal Two: Support</p> <p>Goal Three: Support</p> <p>Goal Four: Support</p> <p>Concept Plan: Support</p> <p>Additional comments: I am in high support that the reserve only be for people riding horses and on foot to enjoy and am grateful for this reserve and the proposal you are presenting. I have been unaware that this reserve has been available for people horse-riding and by foot. It is becoming increasing difficult and unsafe for horse riding in general and safe reserves such as this is very welcomed and sought after for riders who enjoy this past-time. Thank you.</p>	<p><i>Council thanks the submitter and acknowledges the submission.</i></p> <p><i>No further action required.</i></p>
24	<p>Jessica Blissett</p> <ul style="list-style-type: none"> ▪ Support 	<p>Vision: Support</p> <p>Goal One: Support</p> <p>Goal Two: Support</p> <p>Goal Three: Support</p> <p>Goal Four: Support</p> <p>Concept Plan: Support</p> <p>Additional comments: I am a horse rider, I use the reserve and would love to continue to do so</p>	<p><i>Council thanks the submitter and acknowledges the submission.</i></p> <p><i>No further action required.</i></p>
25	<p>Ruth Webb</p> <p>Pirongia Community Association</p> <ul style="list-style-type: none"> ▪ Support 	<p>Vision: Support. The Community Association supports the proposed Sainsbury Road Reserve design for the Pirongia Community to use recreationally. We would like to highlight the need for major road upgrades for road safety concerns which includes making the existing entrance wider to avoid traffic queuing on the road. Also, to ensure that adequate off-road parking is part of the plan.</p> <p>Goal One: Support</p> <p>Goal Two: Support</p> <p>Goal Three: Support</p> <p>Goal Four: Support</p> <p>Concept Plan: Support</p> <p>Additional comments: The Community Association supports the proposed Sainsbury Road Reserve design for the Pirongia Community to use recreationally. We would like to highlight the need for major road upgrades for road safety concerns which includes making the existing entrance wider to avoid traffic queuing on the road. Also, to ensure that adequate off-road parking is part of the plan.</p>	<p><i>Council thanks the submitter and acknowledges the submission.</i></p> <p><i>Comments regarding road safety will be passed on to Council's Transportation Department.</i></p>
26	<p>Ruth Webb</p> <ul style="list-style-type: none"> ▪ Support 	<p>Vision: Support</p> <p>Goal One: Support</p> <p>Goal Two: Support</p> <p>Goal Three: Support</p> <p>Goal Four: Support</p> <p>Concept Plan: Support</p>	<p><i>Council thanks the submitter and acknowledges the submission.</i></p> <p><i>Comments regarding road safety will be passed on to Council's Transportation Department.</i></p>

#	Name / Organisation	Submission	Staff Recommendation
		Additional comments: Road needs upgrading especially the first corner needs shelving. Also the current entrance is dangerous when horse floats are travelling in convoy. Opportunities for food Forest there too.	
27	Kasia Hagan ▪ Support	<p>Vision: Support. I'm in full support of developing the 205 Sainsbury Road for horse riding recreation. There is a large community of horse riders locally and other areas of the Waikato that utilise this block. Horse riders are currently faced with an issue of no areas to ride. The equestrian sport/recreation is of economic importance in the region and is fantastic to see the council putting resource to creating areas to ride. / My only suggestion would be to ensure the tracks are developed and established before the planting. The block has fantastic potential for tracks that loop and join, currently it doesn't which makes for frustrating riding</p> <p>Goal One: Support. I'm excited to see plans to restore the native forest and plant the block.</p> <p>Goal Two: Support</p> <p>Goal Three: Oppose. I'm not opposed to having a shared space for walkers but not cyclers. I don't see mountain bikers enjoying the tracks that would be optimal for horses and walkers. I'm all for collaborating and shared spaces but horses have limited to no spaces (areas to ride) , its imperative this remains a horse riding recreation block.</p> <p>Goal Four: Support</p> <p>Concept Plan: Support</p> <p>Additional comments: Great job! Lets develop this block to attract even more people to the region and create a space for horse riders to connect and enjoy the land. I'm excited to see the planting plan and the restoration of forest. The block has so much potential but the first priority is to establish tracks the loop and join. Currently the area becomes boggy even with a little rain and makes it very difficult to ride in areas. Lets get the tracks so it can be utilised to its full potential.</p>	<p><i>Council thanks the submitter and acknowledges the submission.</i></p> <p><i>No further action required.</i></p>
28	Heidi Richardson ▪ Support	<p>Vision: Support. This is a great idea, I regularly ride this block of land with friends and children and it would be really nice to see it developed in a lovely riding and walking block</p> <p>Goal One: Support</p> <p>Goal Two: Support</p> <p>Goal Three: Support. Would support it for biking trails, walking trails and horse riding trails, we don't have enough places to ride in the Waipa area so this would be great</p> <p>Goal Four: Support</p> <p>Concept Plan: Support. as long as the metal carpark and wash bay for horses was kept there</p> <p>Additional comments: Support this idea as long as horse riders can still use the block of land, happy to even come and help develop it for riding trails.</p>	<p><i>Council thanks the submitter and acknowledges the submission.</i></p> <p><i>No further action required.</i></p>
29	Matt Carson ▪ Support	<p>Vision: Support. Restoration of native plantings is hugely important. Easy access/good tracks is key to allowing everyone access to enjoy the flora and fauna</p> <p>Goal One: Support. Fencing off native forest remnants and wetland needs to be done now. Followed by construction of stream crossings</p> <p>Goal Two: Support. Support and enable the horse riding community to be involved in this project</p> <p>Goal Three: Support. Track construction/ maintenance is the first step to making this entire project succeed. It will get more riders using the reserve therefore more community support. It will allow 4wd/tractor access for all other parts of the vision: the plantings, fencing, pest control and the community enjoyment.</p> <p>Goal Four: Support. I support this section. Manu Whenua involvement is key. Way finding signage is hugely important - currently a lot of people won't go there because they are unclear of where they can and can't go</p> <p>Concept Plan: Support. The plan is good. We do need to ensure all tracks link up and don't have dead ends More clarity is needed around the bike track. If bikes where travelling at speed this could be dangerous. It should be a "shared path" for horses, walkers and bikers to stay off the road. Speed bumps of some sort would be needed to slow bikes.</p> <p>Additional comments: Track construction/ maintenance is the first step to making this entire project succeed. It will get more riders using the reserve therefore more community support. It will allow 4wd/tractor access for all other parts of the vision: the plantings, fencing, pest control and the community enjoyment. Currently cattle grazing is taking priority over public's enjoyment of the reserve. Grazing needs to be phased out. Cattle are currently damaging wetlands, native forest remnants an the stream.</p>	<p><i>Council thanks the submitter and acknowledges the submission.</i></p> <p><i>Staff recommend the RMP be amended to include native planting only.</i></p>
30	Holly Nicholson ▪ Support	<p>Vision: Support</p> <p>Goal One: Support</p> <p>Goal Two: Support</p> <p>Goal Three: Support</p> <p>Goal Four: Support</p> <p>Concept Plan: Support</p>	<p><i>Council thanks the submitter and acknowledges the submission.</i></p> <p><i>No further action required.</i></p>

#	Name / Organisation	Submission	Staff Recommendation
31	Claire Sandy ▪ Support	Vision: Support Goal One: Support Goal Two: Support Goal Three: Support Goal Four: Support Concept Plan: Support Additional comments: Please help us ride our horses in a safe and enjoyable environment , there are so few places available to us. We are respectful and appreciative and just want to be able to enjoy this wonderful area of ours. Thanks	<i>Council thanks the submitter and acknowledges the submission. No further action required.</i>
32	Ruth Carlyle ▪ Support	Vision: Support Goal One: Support Goal Two: Support Goal Three: Support Goal Four: Support Concept Plan: Support Additional comments: Please keep it only for horse riders. There are so few safe places for us to ride without vehicles and mountain bikes. Please have better signage of routes and fewer dead end tracks.	<i>Council thanks the submitter and acknowledges the submission. The proposed cycleway project comprising of an off-road cycleway running parallel to the road is indicative and may be repositioned depending on future land availability.</i>
33	Meike Raasche ▪ Support	Vision: Support Goal One: Support Goal Two: Support Goal Three: Support. We need to develop a track system without dead ends and clear signage as well as accessibility for tractors and other machinery for maintenance. This will encourage more users Goal Four: Support Concept Plan: Support Additional comments: I would prefer the reserve to be for horses or on foot. cyclists have multiple options to go to where horse riding places are very limited. Horses and cyclists are not very compatible and sometimes downright dangerous. Love the idea of native forestry, we should try to restore native as often as we can.	<i>Council thanks the submitter and acknowledges the submission. The proposed cycleway project comprising an off-road cycleway running parallel to the road is indicative and is subject to detailed design and funding.</i>
34	Angelika Anderson ▪ Support	Vision: Support. I agree that connecting people to resources such as this, where users derive benefits will promote their commitment to contribute and protect the reserve. The future vision is inspiring. Goal One: Support. Promoting the regeneration of native forest is important. / Ensure the safety of horse riders is considered in the creation of stream crossings, i.e. shallow fords where possible, rather than wooden bridges. Goal Two: Support. Ensure the community is equally involved in the planning - not just funding and execution. / It's a good idea to build on existing community interests. Goal Three: Support The safety of all users is paramount. / There are very few safe riding trails in this area of the Waikato. Bicycles and horses do not always mix well. Ensure that there are bicycle-free trails available for inexperienced or young horses and riders. Ensure that there are clear rules and appropriate signage for the safe use of shared trails. Generally, internationally it is accepted that horse riders have the right of way as they potentially carry the greatest risk and are the least predictable Goal Four: Support Yes, connection between the local population and the reserve is important. Concept Plan: Support Additional comments: I have some reservations about the reserve being used for cycling and horse riding. The main reason for this that the most likely cyclists using this reserve would be mountain bikers, who tend to ride fast. Currently the mountain biking community already have access to good facilities further up the hill. There is an abundance of cycle paths available across the Waikato. It would be nice to have a place where horse riders could feel completely safe.	<i>Council thanks the submitter and acknowledges the submission. Staff recommend the RMP be amended to include native planting only. The proposed cycleway project comprising an off-road cycleway running parallel to the road is indicative and is subject to detailed design and funding.</i>
35	Laurie-Anne Cole ▪ Support	Vision: Support Goal One: Support	<i>Council thanks the submitter and acknowledges the submission.</i>

#	Name / Organisation	Submission	Staff Recommendation
		<p>Goal Two: Support</p> <p>Goal Three: Support</p> <p>Goal Four: Support</p> <p>Concept Plan: Support</p> <p>Additional comments: I think the reserve being for horse riders & walkers only is a great idea as cyclists already have many other places available for them. I think the mix of native & exotic forestry is a great idea</p>	<p>Staff recommend the RMP be amended to include native planting only.</p>
36	<p>Justene Davidson</p> <ul style="list-style-type: none"> ▪ Support 	<p>Vision: Support</p> <p>Goal One: Support</p> <p>Goal Two: Support</p> <p>Goal Three: Neutral I would like to continue the use of horse riding and walking tracks on this block</p> <p>Goal Four: Support</p> <p>Concept Plan: Support</p>	<p>Council thanks the submitter and acknowledges the submission.</p> <p>No further action required.</p>
37	<p>Faith Haakma</p> <ul style="list-style-type: none"> ▪ Neutral / Support / Oppose 	<p>Vision: Neutral. Keep it simple! Keep it as primarily a basic horse riding area with other activities secondary.</p> <p>Goal One: Support. To put any plantings in requires pest control - But keep it simple - this is a recreation reserve not restoration</p> <p>Goal Two: Neutral. Good luck with that</p> <p>Goal Three: Neutral Keep it simple! Keep the challenges there for horses. Not nice having a horse rear up because a cyclist, runner or person with an umbrella or some such thing likes the idea of a stroll in the bush and spooks the horse. Cycle way along the road separate from the horse riding area is great.</p> <p>Goal Four: Oppose. Keep it simple - name = 205 Sainsbury - no cost no problem - How it is known locally now! Story boards and carvings are unnecessary!</p> <p>Concept Plan: Support</p> <p>Additional comments: In case you hadn't guessed - Keep it simple and safe for horse riding, but ensure they natural challenges are maintained. Keep the focus on the reserve as a HORSE RIDING RECREATIONAL RESERVE!</p>	<p>Council thanks the submitter and acknowledges the submission.</p> <p>No further action required.</p>
38	<p>Sharlene Eichler</p> <ul style="list-style-type: none"> ▪ Support 	<p>Vision: Support. I think it will be great to make a nice native area for horse riders and walkers to use as there is not many places available</p> <p>Goal One: Support</p> <p>Goal Two: Support</p> <p>Goal Three: Support. There is not many places available for horse riders so it will be nice to have available places to ride.</p> <p>Goal Four: Support</p> <p>Concept Plan: Support. The draft plan looks good. Will make the area very attractive and appealing.</p> <p>Additional comments: Horses and walkers are a good mix. Mountain bikes and horses not so much as a lot of horses get spooked by bikes</p>	<p>Council thanks the submitter and acknowledges the submission.</p> <p>No further action required.</p>
39	<p>Lynette Trewavas</p> <ul style="list-style-type: none"> ▪ Support 	<p>Vision: Neutral</p> <p>Goal One: Support. Restoring native forest is always good for the local biodiversity and will encourage birds to visit the reserve from the nearby forested areas.</p> <p>Goal Two: Support. I support community involvement as this will reduce vandalism and encourage more people to visit the reserve.</p> <p>Goal Three: Oppose. This section encourages a wide range of recreational users, except dogs. I understand this is because stock may be present. However dogs on lead when stock are around should resolve the issue. Dogs should be allowed off lead when stock are absent. I consider it offensive to encourage all recreational users except people with dogs. If horses are allowed, dogs on lead should be allowed. This is exactly the place that dog owners need to stimulate their dogs, not tiny dog exercise areas. If dogs are not allowed, I personally will never use the reserve. / Inclusion of dogs at the site, preferably with a large dog off lead area.</p> <p>Goal Four: Neutral. See comments for the above section. Dog owners should not be excluded from reserve. If horses are allowed, dogs should be allowed.</p> <p>Concept Plan: Neutral</p> <p>Additional comments: I oppose the reserve excluding dogs. A site like this is perfect for people to exercise their dogs in a more natural environment.</p>	<p>Council thanks the submitter and acknowledges the submission.</p> <p>Staff note that Council's Dog Bylaw is the primary policy for the presence of dogs on reserves. Currently, Sainsbury Road Reserve is a dog on-lead area.</p>

#	Name / Organisation	Submission	Staff Recommendation
40	Les McKenzie Pirongia MTB ▪ Support	Vision: Support. The vision to create a space where everyone can enjoy, participate and contribute to what the site offers is a priority Goal One: Support. Promote the planting of natives in the Reserve area which will encourage bird life Goal Two: Support. Ongoing planting and maintenance to be promoted amongst community groups by having 2-3 days per year where there is a day for all to participate Goal Three: Support. A cycle path inside the roadside fence would be an advantage. Keeping cars and cyclists separate. Horse trails and pedestrians to also have their designated areas Goal Four: Support. Walkways and boards that explain the history and plants of significance in the area Concept Plan: Support. Planting of natives and exotics with regards for the waterways is a must and will future proof the site for birds and other wildlife. Pest control is also a must Additional comments: I think the Reserve should be accessible to all. Walkers, horse riders and cyclists in their designated areas	<i>Council thanks the submitter and acknowledges the submission.</i> <i>Staff are recommending the RMP be amended to include native planting only.</i> <i>The proposed cycleway project comprising an off-road cycleway running parallel to the road is indicative and is subject to detailed design and funding.</i>
41	Sarah McKinlay Horse Access Advocates Waikato Inc ▪ Support	Vision: Support Goal One: Support Goal Two: Support Goal Three: Support. HAAWI supports working with the horse riding community to develop a track construction programme which includes identifying opportunities for loop tracks, appropriate grades for safe riding and easy to use gate infrastructure will maximise the useability of the reserve for horse riding. Goal Four: Support Concept Plan: Support	<i>Council thanks the submitter and acknowledges the submission.</i> <i>No further action required.</i>
42	Dominique Anderson ▪ Support / Neutral	Vision: Support Goal One: Support Goal Two: Support Goal Three: Support. Please include horse riding trails in the reserve also. Goal Four: Support Concept Plan: Neutral Additional comments: Riding and walking can go hand in hand.	<i>Council thanks the submitter and acknowledges the submission.</i> <i>No further action required.</i>
43	Sandra Rawlings ▪ Support	Vision: Support. Forest exploration and different riding terrain is great. Less gates to open and shut is fantastic as many of the current gates are difficult to open whilst on horseback. Goal One: Support Goal Two: Support Goal Three: Support. As long as people are open to sharing the space with horses and signage reflects the range of users including horse riders. Goal Four: Support Native forest regeneration attracts birds. Part of our enjoyment of horse riding is the enjoyment of nature and wildlife and serenity that comes with it. Concept Plan: Support I would like to see some horse riding water crossings. Additional comments: An option for a water crossing (even if small) would be great for horse riding.	<i>Council thanks the submitter and acknowledges the submission.</i> <i>Staff recommend the RMP be amended to include native planting only.</i>
44	Jennifer Carew WHDVS - Waikato Horse Drawn Vehicle Society ▪ Neutral / Support	Vision: Support. Would like tracks to be accessible (at least 2 metres wide) to allow for carriages to go through. This way, we can expand our ability to offer access to disabled persons, through equestrian means. Goal One: Neutral Goal Two: Neutral Goal Three: Neutral Goal Four: Neutral Concept Plan: Neutral	<i>Council thanks the submitter and acknowledges the submission.</i> <i>Staff will make sure to incorporate access for all when designing the tracks.</i>
45	Adrian Bathgate and Les McKenzie	Vision: Support	<i>Council thanks the submitter and acknowledges the submission.</i>

#	Name / Organisation	Submission	Staff Recommendation
	Pirongia MTB Club ▪ Support	<p>Goal One: Support</p> <p>Goal Two: Support</p> <p>Goal Three: Support. On behalf of the Pirongia MTB club we would like to see opportunities for recreation to flourish on the maunga. As we have access to the Council forestry land at the top of the Sainsbury Road, we do not seek widespread access to the Sainsbury Reserve for mountain bikers. However we do think that cycling access along the roadside boundary of the reserve would be a great addition to the reserve. This would improve safety on Sainsbury Road and improve the experience for the many cyclists who use the road. This would be best done with two trails, an uphill biking/two way walking trail and a downhill biking only trail.</p> <p>Goal Four: Support</p> <p>Concept Plan: Support</p> <p>Additional comments: The Pirongia MTB Club supports the development of the Sainsbury Reserve, balancing the need to protect and enhance the environment with enabling opportunities for the community to experience the maunga. The club would like this to go further, we would like to see the Reserve expanded to include the 300ha block at the top of Sainsbury Road, which is currently used as forestry and water catchment by the Council. Given the strong growth of the club and the MTB park, we believe there's far more value in this land than the trees being cut down every 30 years. Together, the two blocks would create an amazing recreational asset for the Waipa District.</p>	<i>The proposed cycleway project comprising an off-road cycleway running parallel to the road is indicative and is subject to detailed design and funding</i>
46	Lisa Berejoni ▪ Support	<p>Vision: Support</p> <p>Goal One: Support</p> <p>Goal Two: Support</p> <p>Goal Three: Support. It is great to read about the community consultation and trying to cater to as many users as possible.</p> <p>Goal Four: Support</p> <p>Concept Plan: Support</p> <p>Additional comments: I like the idea of "an off-road cycle track on the roadside boundary of the reserve was deemed an appropriate balance of recreational activities" to make the area more accessible to more individuals.</p>	<p><i>Council thanks the submitter and acknowledges the submission.</i></p> <p><i>The proposed cycleway project comprising an off-road cycleway running parallel to the road is indicative and is subject to detailed design and funding</i></p>
47	Rachel Duncan ▪ Support / Neutral	<p>Vision: Support</p> <p>Goal One: Support</p> <p>Goal Two: Support. Yes more of this please.</p> <p>Goal Three: Support. It would be great to prioritise walking tracks. The esplanade walk is very well used. People like to stay local and keep up fitness.</p> <p>Goal Four: Support. Not enough public places to walk currently. If you are not fit enough to walk up Mount Pirongia. Local walks keep people out of their cars. Will need a carpark as too dangerous to walk from the village to the reserve. (or cycle!)</p> <p>Concept Plan: Neutral</p> <p>Additional comments: Walking tracks priority please, bikes need to be segregated as can be very fast > accidents. Native forestry better - why exotic?</p>	<p><i>Council thanks the submitter and acknowledges the submission.</i></p> <p><i>Staff recommend the RMP be amended to include native planting only.</i></p>
48	8 Tony Cato ▪ Support	<p>Vision: Support. Get the tracks improved and the native trees planted.</p> <p>Goal One: Support</p> <p>Goal Two: Support</p> <p>Goal Three: Support</p> <p>Goal Four: Support</p> <p>Concept Plan: Support</p> <p>Additional comments: Track improvements need to happen first then planting. Working grazing out of steep areas and tracks.</p>	<p><i>Council thanks the submitter and acknowledges the submission.</i></p> <p><i>Staff recommend the RMP be amended to include native planting only.</i></p>
49	Jo Roxburgh ▪ Support	<p>Vision: Support</p> <p>Goal One: Support</p> <p>Goal Two: Support</p> <p>Goal Three: Support</p>	<p><i>Council thanks the submitter and acknowledges the submission.</i></p> <p><i>The proposed cycleway project comprising an off-road cycleway running</i></p>

#	Name / Organisation	Submission	Staff Recommendation
		<p>Goal Four: Support. Excellent figure plan and into the future. Love the fact that cyclists, horse riders and pedestrians considered - maybe future though the infrastructure is there as road reserve.</p> <p>Concept Plan: Support</p> <p>Additional comments: Horses need more space than mountain bikers and pedestrians. Planting Natives!! We are experiencing at the moment - planted natives after pine harvesting. Pine grows so quickly and overtakes natives in a very short time. Better to have plots of each but I'm all for native! For better for long term future of area, country, planet.</p>	<p><i>parallel to the road is indicative and is subject to detailed design and funding.</i></p> <p><i>Staff recommend the RMP be amended to include native planting only.</i></p>
50	<p>Kathy Boggiss</p> <ul style="list-style-type: none"> ▪ Support / Neutral 	<p>Vision: Support</p> <p>Goal One: Support</p> <p>Goal Two: Support</p> <p>Goal Three: Neutral. How much traffic would increase?</p> <p>Goal Four: Support</p> <p>Concept Plan: Support</p> <p>Additional comments: No pines.</p>	<p><i>Council thanks the submitter and acknowledges the submission.</i></p> <p><i>Staff recommend the RMP be amended to include native planting only.</i></p>
51	<p>Department of Conservation</p> <ul style="list-style-type: none"> ▪ Support 	<p>Vision: Support</p> <p>Goal One: Support. Mistletoe translocation opportunities, support of extensive pest control.</p> <p>Goal Two: Support. Supports pest management and ecological restoration. Tree harvest should be undertaken with due care and incorporate 'Protocols for minimising the risk of dwelling bat roosts.</p> <p>Goal Three: Support. Supports the opportunities to provide a play for horse riding which releases pressure from riders wanting to access Pirongia Forest Park. Does not want dogs allowed on the reserve due to risk to kiwi and kokako.</p> <p>Goal Four: Support. supports the progression of iwi aspirations in this area.</p> <p>Concept Plan: Support</p>	<p><i>Council thanks the submitter and acknowledges the submission.</i></p> <p><i>Staff will continue to collaborate with DOC on these matters.</i></p>
52	<p>Sara Murphy</p> <ul style="list-style-type: none"> ▪ Support 	<p>Vision: Support. Fantastic Place for horse riders, walker to access. Planting forestry (native) would supplement riding, bird life, wildlife etc.</p> <p>Goal One: Support. Providing native areas for horse riding would be fantastic. Always nice to ride through bush listening to bird call and wildlife.</p> <p>Goal Two: Support. Involving the community with planting, planting and taking care of the native planting will create ownership and pride of the area. Will encourage people to use the land more for recreation.</p> <p>Goal Three: Support. The more people using the area - the better. Bikers, horse riders and walkers.</p> <p>Goal Four: Support. Creating places to ride horses is important for connecting with nature and wellbeing</p> <p>Concept Plan: Support. Any native plantings will be fantastic for shade and creating riding areas in bush</p> <p>Additional comments: I don't mind who uses the reserve but maybe different tracks for the users i.e. - horses, bikes. I think creating or upgrading tracks is important to start with - this will make planting etc easier as will be able to use vehicle etc</p>	<p><i>Council thanks the submitter and acknowledges the submission.</i></p> <p><i>Staff recommend the RMP be amended to include native planting only.</i></p>
53	<p>Paula Maree Evans</p> <ul style="list-style-type: none"> ▪ Support 	<p>Vision: Support. There has been lots of lost reserves for horse riding within Waikato District. E.g. Hamilton light horse club, Ngarewarewa horse / Pony Club. Horse riders are not catered for - I support any initiative to allow equestrian recreational events</p> <p>Goal One: Support. I support planning equestrian tracks before forestry is restored.</p> <p>Goal Two: Support</p> <p>Goal Three: Support. We need council support just like every other recreational group within the Waikato District.</p> <p>Goal Four: Support. Provide an opportunities for equestrian people to connect by providing a venue</p> <p>Concept Plan: Support. provide tracks, then replant.</p> <p>Additional comments: horse riders definitely need to be catered for - just like any other group. We need a venue and support. Provide mounting blocks. Provide jumps</p>	<p><i>Council thanks the submitter and acknowledges the submission.</i></p> <p><i>No further action required.</i></p>
54	<p>Leanne Matthews</p>	<p>Vision: Support. Please fix and maintain the tracks. The gates need to be working.</p>	<p><i>Council thanks the submitter and acknowledges the submission.</i></p>

#	Name / Organisation	Submission	Staff Recommendation
	<ul style="list-style-type: none"> Support 	<p>Goal One: Support</p> <p>Goal Two: Support</p> <p>Goal Three: Support</p> <p>Goal Four: Support</p> <p>Concept Plan: Support</p> <p>Additional comments: Shared tracks for all please, native bush, maintain tracks and gave all purpose surfaces, mounting blocks.</p>	<p>Staff recommend the RMP be amended to include native planting only.</p>
55	<p>Joanne Tyler</p> <ul style="list-style-type: none"> Support 	<p>Vision: Support. Agree with the vision. Having the opportunity to ride through restored native bush abundant with wildlife will be fantastic. With less and less rural land in the area, and more housing going in, this area will be so important for the communities wellbeing</p> <p>Goal One: Support</p> <p>Goal Two: Support. Involving the community in the restoration will make people appreciate and care for the reserve.</p> <p>Goal Three: Support. Only concern would be the cycle/pedestrian track that runs down the Sainsbury road boundary. The speed that cyclists come down this track could be dangerous. It would be nice if walkers could also use this track safely to stay off Sainsbury Road if they wish to.</p> <p>Goal Four: Support</p> <p>Concept Plan: Support</p> <p>Additional comments: Only concern with exotic forestry planting would be the costs, damage and disruption to the reserve when the exotic trees required milling. Only horses or walkers would be idea, livestock grazing will do so much damage, pugging to the tracks and will increase costs on maintaining tracks and fencing. Electric would also have to be running if livestock are grazing. Track maintenance/access should be prioritised to get everything underway and accessible for planting/riding etc. Prioritise phasing out livestock grazing.</p>	<p>Council thanks the submitter and acknowledges the submission.</p> <p>Staff recommend the RMP be amended to include native planting only.</p>
56	<p>Fiona Scott</p> <ul style="list-style-type: none"> Oppose / Neutral / Support 	<p>Vision: Support. As a horse rider, dairy farmer and native bush lover I agree with the goals of planting along the stream and any steeper sidling's to stop erosion.</p> <p>Goal One: Oppose. As a horse rider, dairy farmer and native bush lover I agree with the with the goals of planting along the stream and any steeper sidling's to stop erosion. I do not agree with "harvesting" trees in the future for carving. The exception would be if trees fall over by themselves in heavy winds. Damage is done to bush when "selective harvesting" takes place.</p> <p>Goal Two: Oppose. I oppose native tree harvesting! There are some large old pine trees that need to be removed for safety, so they don't fall over on someone. Another good reason to remove these are to stop "wilding" pines spreading into the native bush.</p> <p>Goal Three: Oppose. I would like to see this reserve dedicated to horse riding, walking, jogging and picnicking. Off road cycling has tracks already further up Sainsbury Road. When a cyclist "pops out" from behind a tree or hill into a horse's line of sight the horse can get a fright with the sudden movement. Please look at the example of tect park near Tauranga that has dedicated areas to both interested. Thank you for listening. I think a second entrance could be a waste of money.</p> <p>Goal Four: Neutral. Way finding signs and history noticeboards would be fantastic. Toilets would be good. Picnic tables with a view would be good also. I hope that name that is chosen is short and easy for people to pronounce!</p> <p>Concept Plan: Oppose. Horse riders need loop tracks. The whole piece of land should be dedicated to horse riding simply because there is nowhere else in public ownership in the Waikato that horse riders can go! I travel from Eastern Waikato (Matamata Piako) to ride at Sainsbury Road because there is nowhere else closer! It takes me approx. 1.5 hours to drive there. Western beaches are under the threat of being taken off horse riders as a place to ride. I support the reserve only being for people riding horses or people on foot</p> <p>Additional comments: Remove any non-native unstable pine trees. They are dangerous and spreads wild pines. Planting should be native only.</p>	<p>Council thanks the submitter and acknowledges the submission.</p> <p>Staff recommend the RMP be amended to include native planting only.</p>
57	<p>Shirley Collie</p> <ul style="list-style-type: none"> Support 	<p>Vision: Support. I want to continue to enjoy the Reserve whilst riding my horse</p> <p>Goal One: Support. Regeneration of bush areas will enhance every visitors experience of the Reserve.</p> <p>Goal Two: Support. I support restoration initiatives</p> <p>Goal Three: Support. I wholly support this approach & goal outlined. The policies and explanations detailed are ideal, achievable in the medium term and will help improve the Reserve for users.</p> <p>Goal Four: Support. A better name than 205 Sainsbury Road is a priority!!! Signage and viewing platforms will be great benefit to all users.</p> <p>Concept Plan: Support. I have viewed, read and understand the concept plan. I entirely agree with this plan for the Reserve. Bring it on!!</p> <p>Additional comments: I agree with having horse riders and walkers only in the Reserve. A fair compromise for biker riders is the plan for the bike path alongside the road ONLY.</p>	<p>Council thanks the submitter and acknowledges the submission.</p> <p>No further action required.</p>

#	Name / Organisation	Submission	Staff Recommendation
58	Bill Harris ▪ Support	Vision: Support. We favour the building of a kai forest and the return of kaimoana to the stream. We also favour the planting of native forest on our Maunga. Goal One: Support Goal Two: Support Goal Three: Support Goal Four: Support Concept Plan: Support Additional comments: Supports a name reflecting "Kahu" as put forward by Tom Roa	<i>Council thanks the submitter and acknowledges the submission.</i> <i>Staff recommend the RMP be amended to include native planting only.</i> <i>Discussions will continue with mana whenua for the naming of the reserve.</i>
59	Jennifer Hunt ▪ Support	Vision: Support. Ngaparierua stream will not be restored to clear water - flow with water cress and aquatic life is if the planned exotic forest and existing pine plantations continue. The plant litter from these trees will fall and wash into the water-course and physically + chemically contaminate it. This will reduce any revitalisation of te awa. Requires a sizeable 'green buffer' from any stock areas. Goal One: Support. There remains very little of the original native bush cover. These areas must be protected urgently to encourage regeneration. Goal Two: Support. However planting of pinus radiata for harvesting OR carbon credits MUST be EXCLUDED. Any exotic trees planted must be non-toxic to the environment AND not readily seed, thus limiting them becoming nuisance species on the maunga. Goal Three: Support. Look out points made disability accessible improve parking areas and ablution facilities. Disability access, eco-friendly composting toilet. More generalised usage focus NOT all about horse-riders. Easy access at gates - styles and disability gates Goal Four: Support. Wayfinding signs including mana whenua historical points. Plant names and mana whenua usage (Māori, English, botanical). Seating, picnic tables along pathways @ viewpoint. History board, general and carparks. Identify & promote the old water storage tank. Concept Plan: Support. But object to any further planting of pinus radiata. Any exotics that are planted for harvesting must be where access by 'appropriate vehicles' needed won't require new temporary road works. Additional comments: NO MORE PINE TREES, ever! Remove existing pine trees before any other major planting happens. Composting toilets with disability access. Disability access especially to viewing points.	<i>Council thanks the submitter and acknowledges the submission.</i> <i>Staff recommend the RMP be amended to include native planting only.</i>
60	Pirongia Community Board ▪ Support	Vision: Support Goal One: Support Goal Two: Support Goal Three: Support Goal Four: Support Concept Plan: Support	<i>Council thanks the submitter and acknowledges the submission.</i> <i>No further action required.</i>

Staff recommended changes (as in hearing report):

Based on the submissions received, analysis of the submissions and discussions with relevant Council staff, there are a number of changes recommended to the draft RMP. These changes relate to the vegetation cover and recreation activities at the reserve, as follows:

- *The concept plan in the draft RMP is amended to provide only for the planting of native species on the reserve, rather than the proposed area of exotic and natives that could be used for selective forestry harvesting in the future. The rationale for this recommendation is based on the strong community support for native vegetation only.*
- *Additionally, planting solely native vegetation is aligned with aspirations of the Taia te Taiao Ecological Corridor Project, which aims to restore an ecological corridor between Maungatautari and Pirongia along the Mangapiko River and the Ngāparierua Stream. The proposed 2.8- hectare continuous cover forestry area will still be available for selective harvesting should Council decide harvesting is worthwhile to pursue in the future;*
- *The wording in the concept plan regarding the proposed two-way cycle track running alongside the reserve is amended to reflect that the ecological restoration of the reserve and the improvement of recreational access across the reserve for walkers, runners and horse riders are the top priorities for implementation of the RMP.*

The rationale for this amendment is that there was opposition from some submitters to the reserve being used for cycling, as well as strong support for the reserve being used the recreational activities of walking, running and horse riding and for ecological restoration to be undertaken. Additionally, while the RMP provides a proposed location for the cycle track, the project is subject to analysis of the road safety benefits and costs, detailed design and sourcing of funding. It is recommended that the wording in the landscape concept plan (outlined in Section 4 of the draft RMP) be amended:

- **FROM:** *“Proposed 2-way cycle track generally aligned near road side boundary. Enables cyclists to avoid using road for length of reserve. Potential to create mountain bike track linkages on reserve. Track approx. 1.8km long”;*
- **TO:** *“Proposed 2-way cycle track generally aligned within road corridor alongside the reserve. Enables cyclists to avoid using road for length of reserve. Track approx. 1.8km long”.*