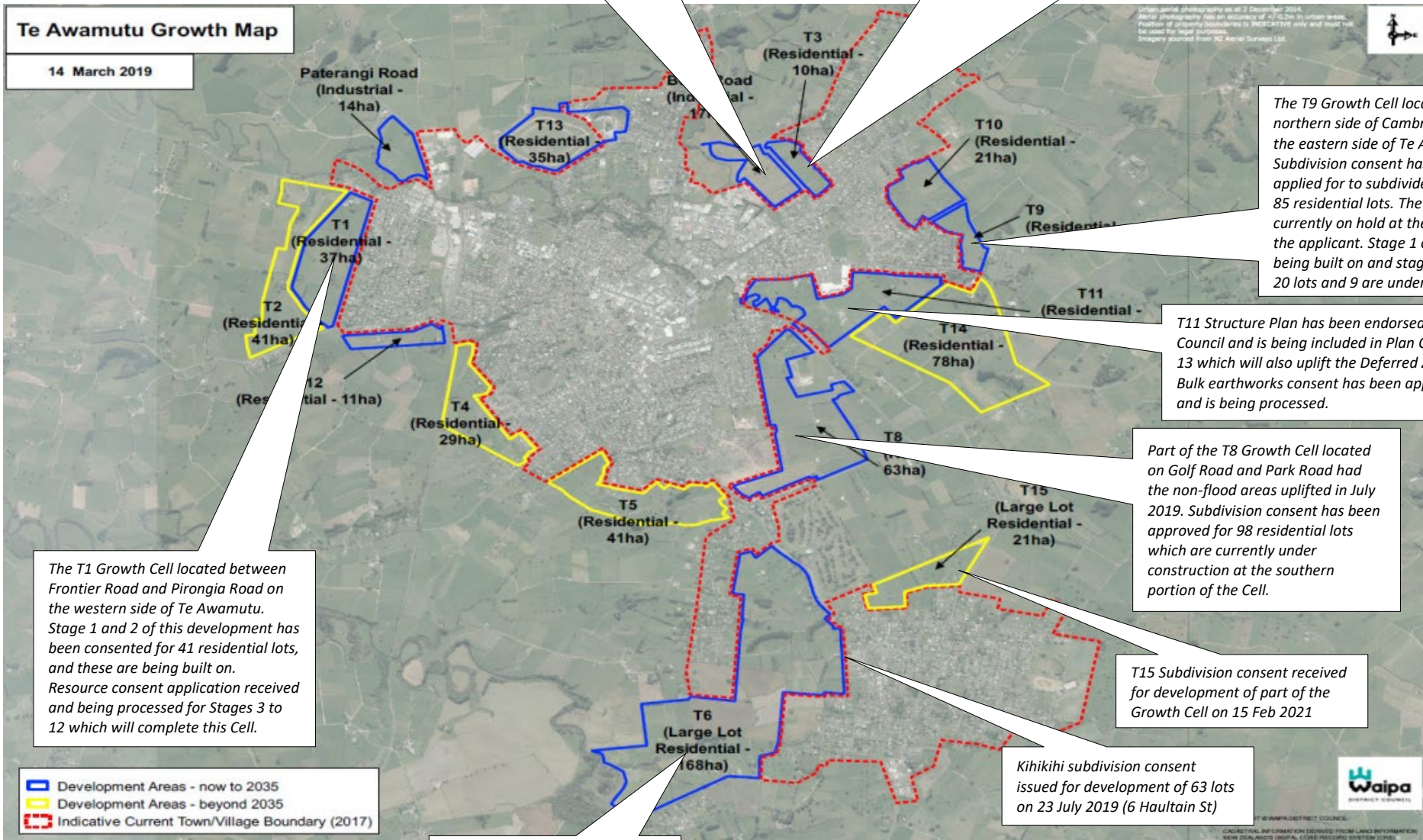


Te Awamutu Growth Map

14 March 2019



Bond Road north has been subdivided and constructed for industrial use. No current indication from landowner of on Bond Road south regarding development.

Part of the T3 Growth Cell had its zoning uplifted in part in May 2017 and subdivision consent for 41 residential lots approved in July 2017. To date approximately half of the subdivision has new dwellings on them. In terms of the remaining part of the Growth Cell, this is still deferred zoning and discussions are underway with the owner regarding potential subdivision.

The T9 Growth Cell located on the northern side of Cambridge Road on the eastern side of Te Awamutu. Subdivision consent has been applied for to subdivide this site into 85 residential lots. The application is currently on hold at the request of the applicant. Stage 1 of 30 lots are being built on and stages 2 and 3 of 20 lots and 9 are underway.

T11 Structure Plan has been endorsed by Council and is being included in Plan Change 13 which will also uplift the Deferred Zone. Bulk earthworks consent has been applied for and is being processed.

Part of the T8 Growth Cell located on Golf Road and Park Road had the non-flood areas uplifted in July 2019. Subdivision consent has been approved for 98 residential lots which are currently under construction at the southern portion of the Cell.

The T1 Growth Cell located between Frontier Road and Pirongia Road on the western side of Te Awamutu. Stage 1 and 2 of this development has been consented for 41 residential lots, and these are being built on. Resource consent application received and being processed for Stages 3 to 12 which will complete this Cell.

T15 Subdivision consent received for development of part of the Growth Cell on 15 Feb 2021

Kihikihi subdivision consent issued for development of 63 lots on 23 July 2019 (6 Haultain St)

T6 Structure Plan has been endorsed by Council and is being included in Plan Change 13 which will also uplift the Deferred Zone.

Note: T12 and T13 – no indication from landowners that they wish to pursue development at this time



© 2019 DISTRICT COUNCIL
 CADASTRAL INFORMATION DERIVED FROM LAND INFORMATION NEW ZEALAND'S DIGITAL CORE RECORD SYSTEM (CORS)