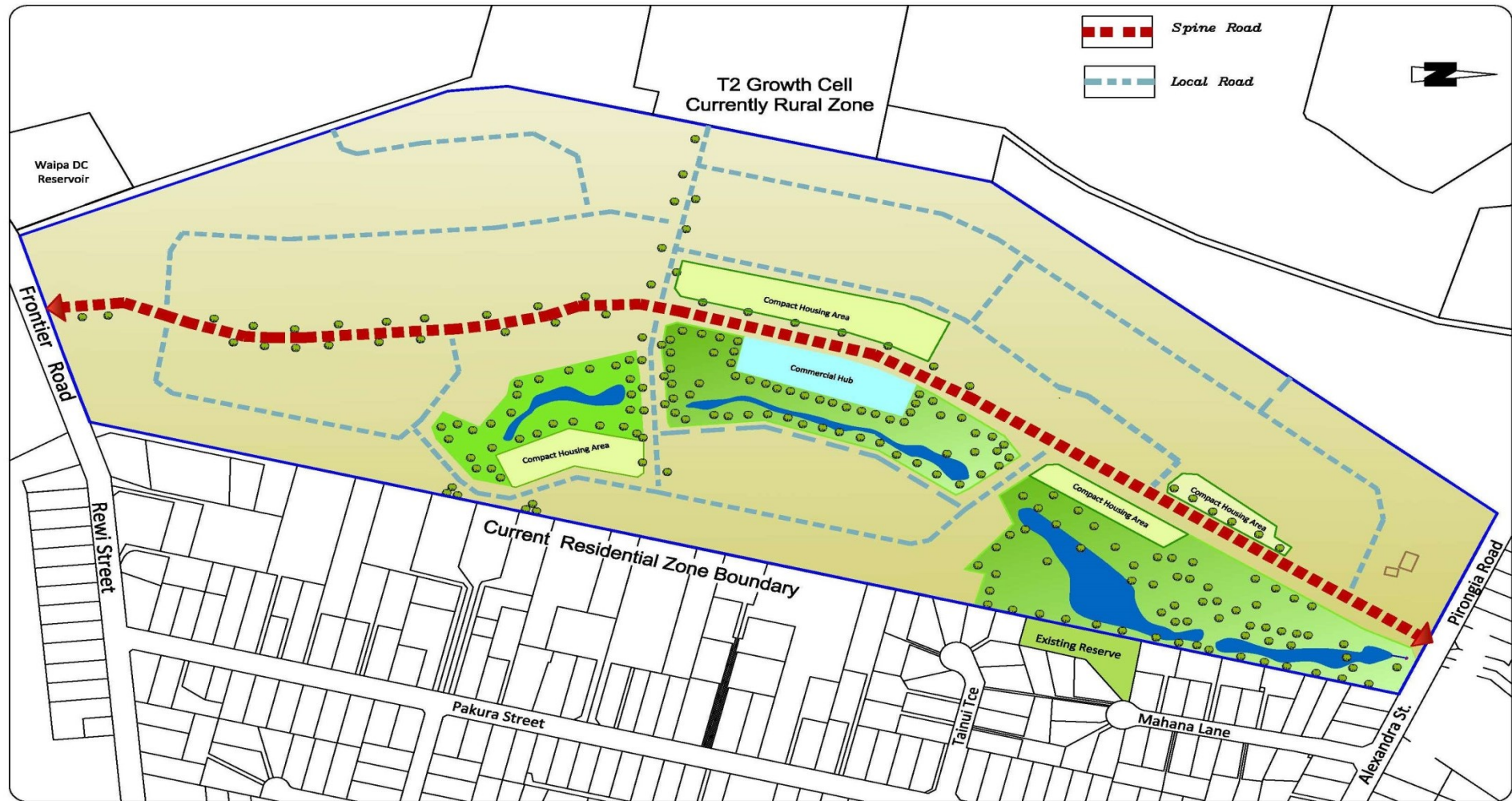


# Appendix S17 - Te Awamutu T1 Growth Cell Structure Plan



**Auckland Office:**  
A: 25 Broadway, Newmarket  
P: 09 524 7209

**Hamilton Office:**  
A: 58 Church Road, Hamilton  
P: 07 849 9921

**Te Awamutu Office:**  
A: 103 Market Street, Te Awamutu  
P: 07 871 6144

## TE AWAMUTU T1 GROWTH CELL STRUCTURE PLAN Roading

Issue	Description	Checked	Date

Designed:	DCL	Date	Feb 2016
Drawn:	KLC	Date	Feb 2016
Checked:	DCL	Date	Feb 2016

Job No:	Revision:	Page No:
<b>F2212</b>	<b>S1</b>	<b>1 of 1</b>

Scale: **1:3000**  
(A3 Original)