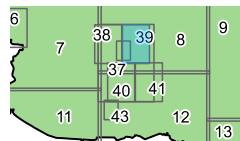


Prepared by the Waipā District Council. All rights reserved. No part of this publication may be reproduced, stored in a retrieval system, or transmitted in any form or by any means, electronic, mechanical, photocopying, recording, or by any information storage and retrieval system, without the prior written permission of the Waipā District Council.

Copyright © Waipā District Council. All rights reserved. No part of this publication may be reproduced, stored in a retrieval system, or transmitted in any form or by any means, electronic, mechanical, photocopying, recording, or by any information storage and retrieval system, without the prior written permission of the Waipā District Council.

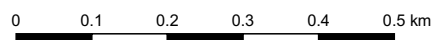
39 Zones

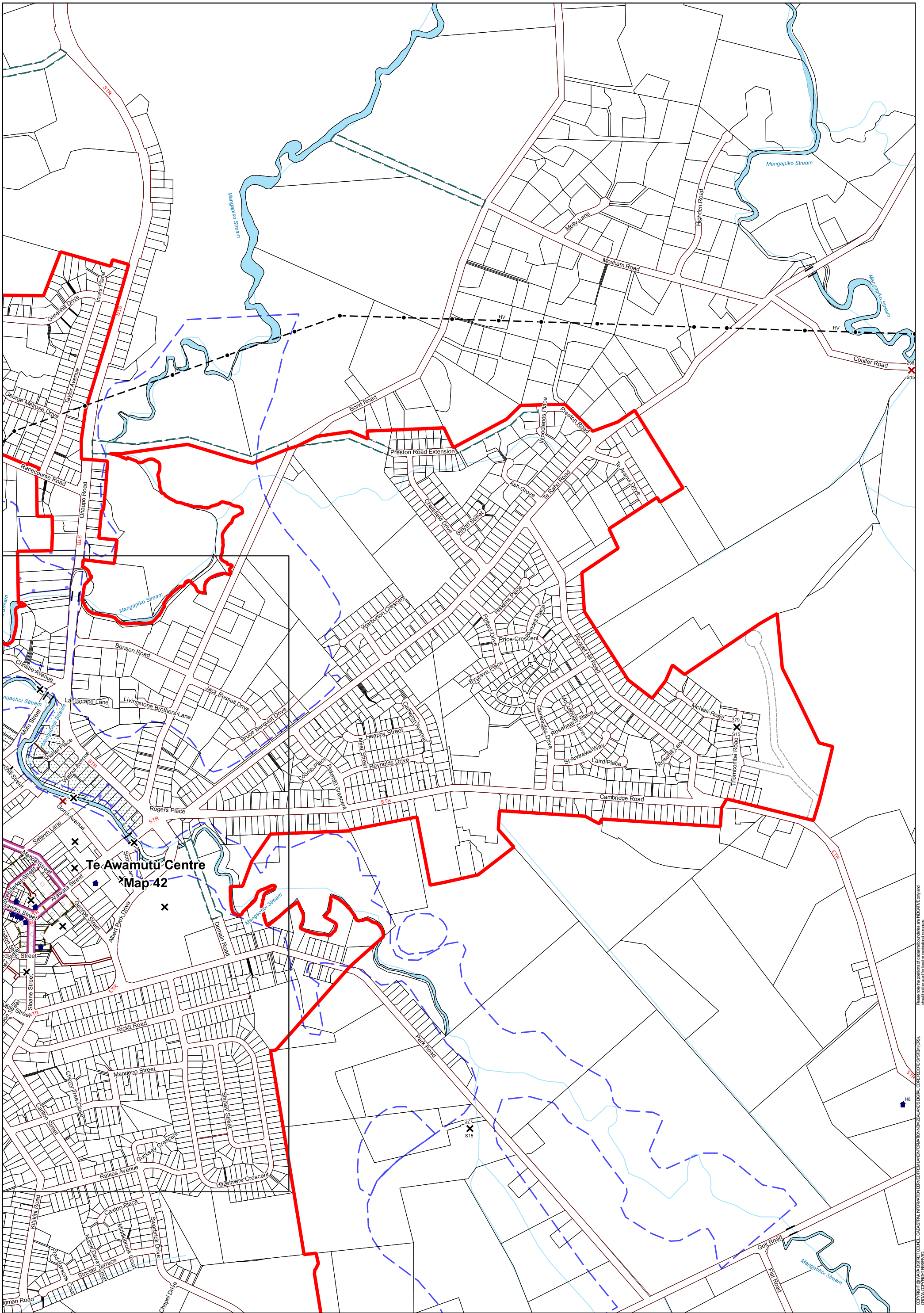


Te Awamutu (East)

Waipā District Plan
Page Version - 27 January 2017

Scale: 1 : 10,000 at A3





Te Awamutu Centre
Map 42

