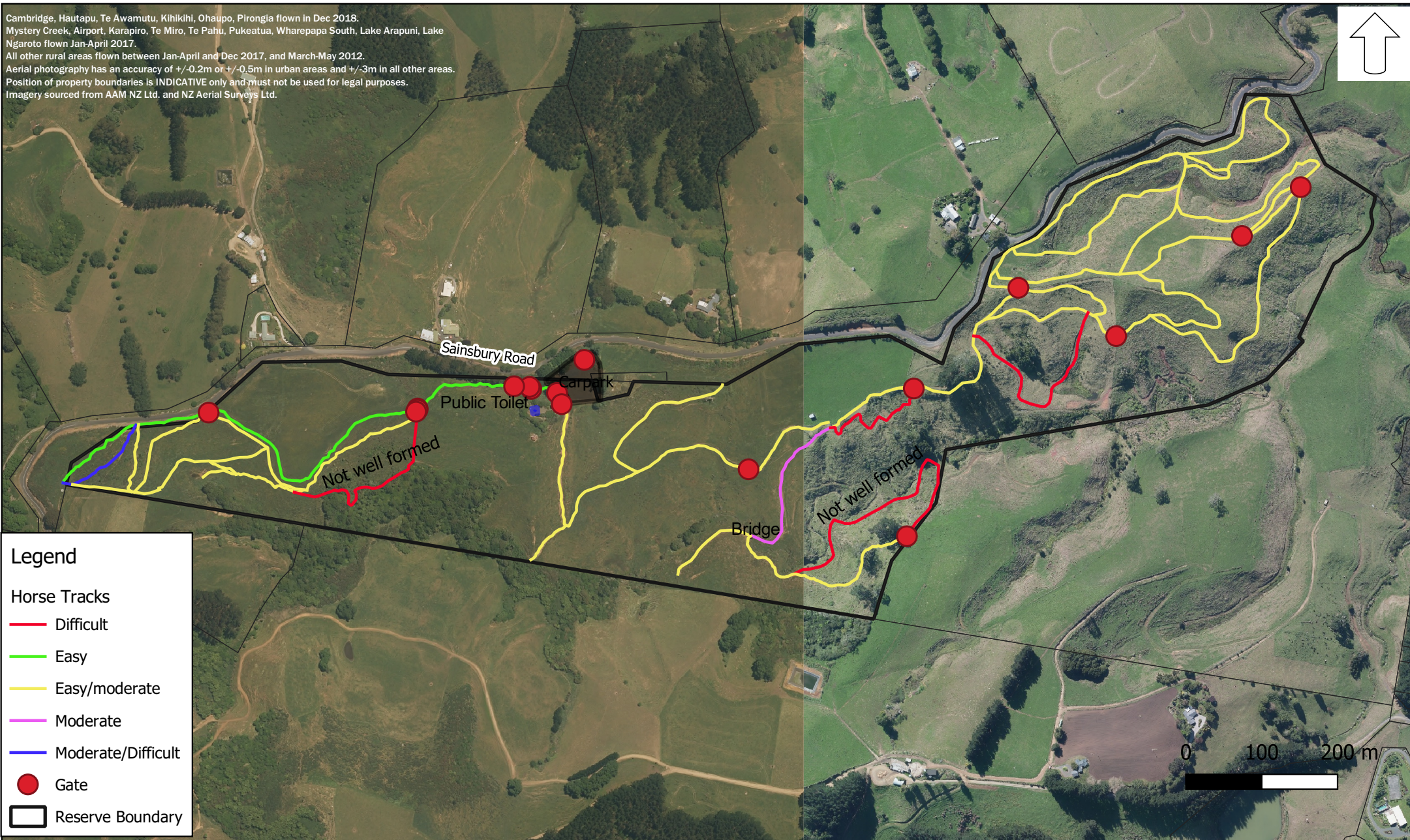
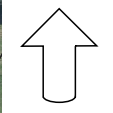


Cambridge, Hautapu, Te Awamutu, Kihikihi, Ohaupo, Pirongia flown in Dec 2018.
 Mystery Creek, Airport, Karapiro, Te Miro, Te Pahu, Pukeatua, Wharepapa South, Lake Arapuni, Lake Ngaroto flown Jan-April 2017.
 All other rural areas flown between Jan-April and Dec 2017, and March-May 2012.
 Aerial photography has an accuracy of +/-0.2m or +/-0.5m in urban areas and +/-3m in all other areas.
 Position of property boundaries is INDICATIVE only and must not be used for legal purposes.
 Imagery sourced from AAM NZ Ltd. and NZ Aerial Surveys Ltd.



Legend

- Difficult
- Easy
- Easy/moderate
- Moderate
- Moderate/Difficult
- Gate
- Reserve Boundary

Sainsbury Road Reserve Horse Tracks

Disclaimer - This map shows unformed horse-riding tracks at 205 Sainsbury Road to support the horse-riding community. Council does not currently maintain these tracks, hence some of these tracks might not be easily accessible and could be overgrown with gorse. The track alignment may change in the future as Council work on the Concept Plan for this Reserve.

COPYRIGHT © WAIPA DISTRICT COUNCIL

CADASTRAL INFORMATION DERIVED FROM LAND INFORMATION NEW ZEALAND'S DIGITAL CORE RECORD SYSTEM (CRS).

1:6500 @ A4 Date: 21 Dec 2020

