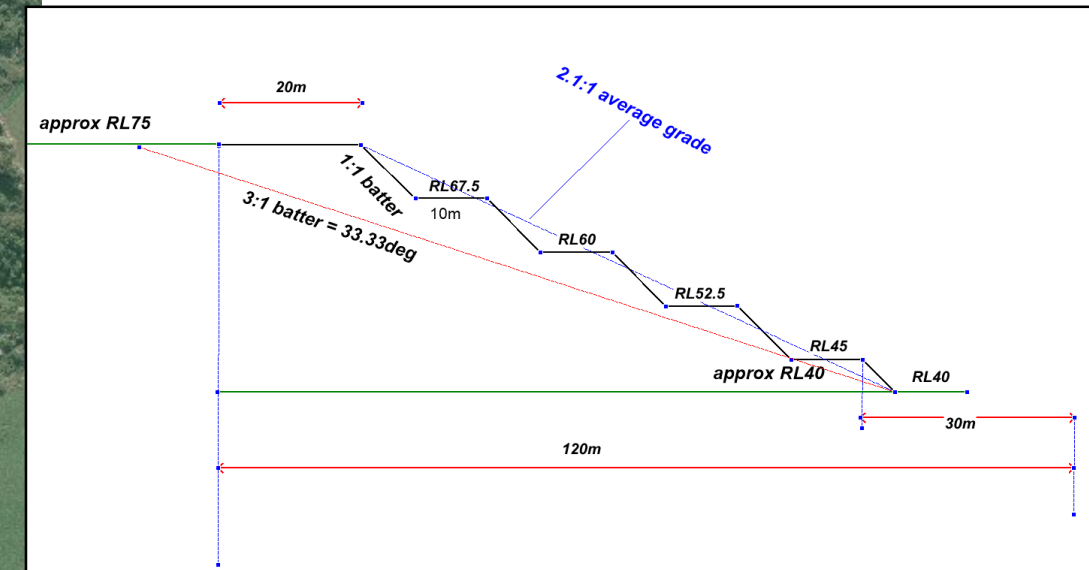
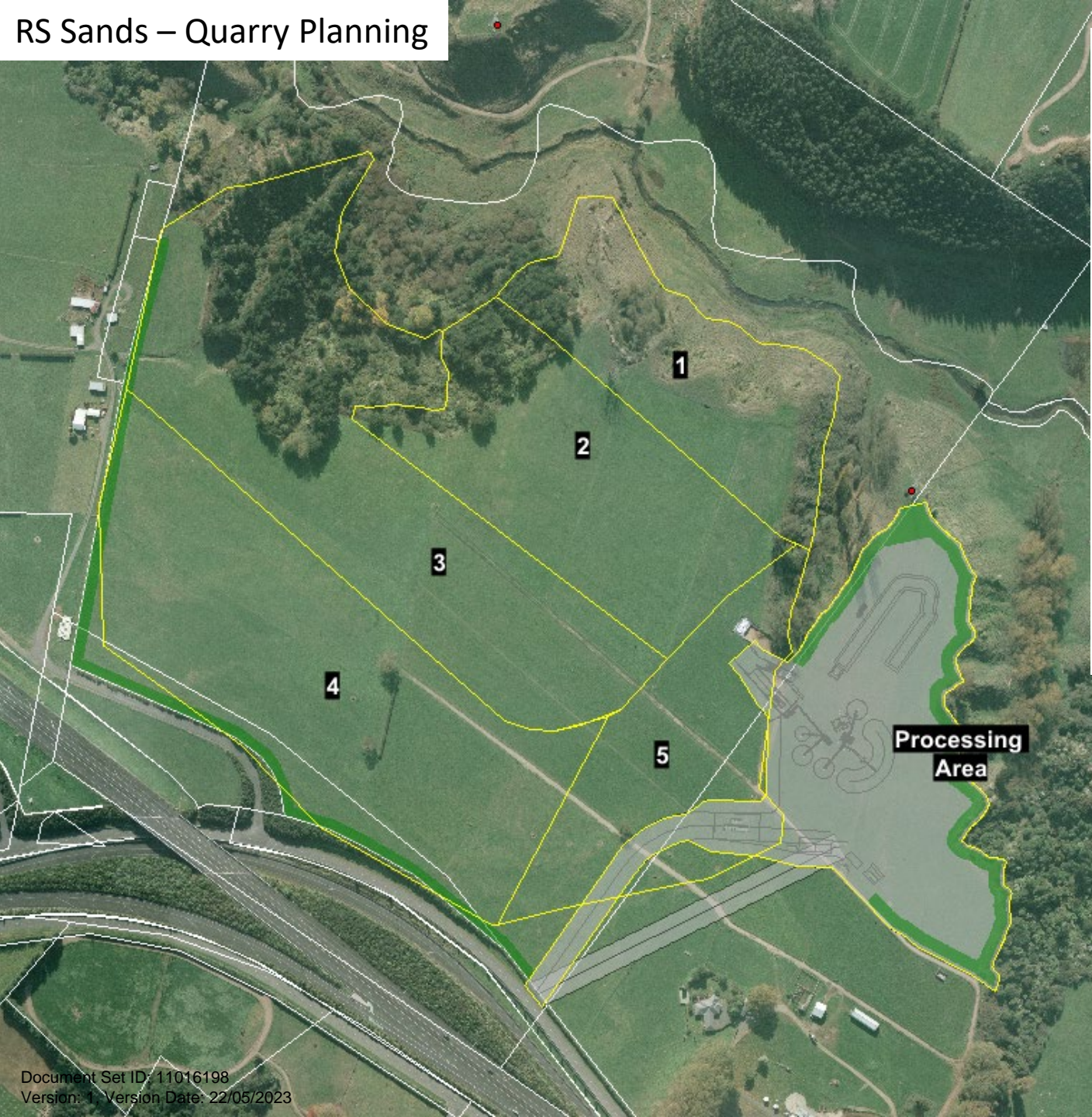


Newcombe Road entrance and Area A staging

Key points

- Yellow lines indicative only
- Batters on the yellow lines reflect interim batters (see figure below)
- Batters on the outer edges which = the contours shown are 3:1
- Sales are estimated at 300,000tpa
- Sand density used = 1.8t/m³
- Have assumed RL 67.5 = top of sand everything above this is a 50-50 split between overburden and pit sand
- Balance = concrete sand approx. 27.5m



RS Sands – Quarry Planning

As surveyed June 2020

Now 2021



RS Sands – Quarry Planning

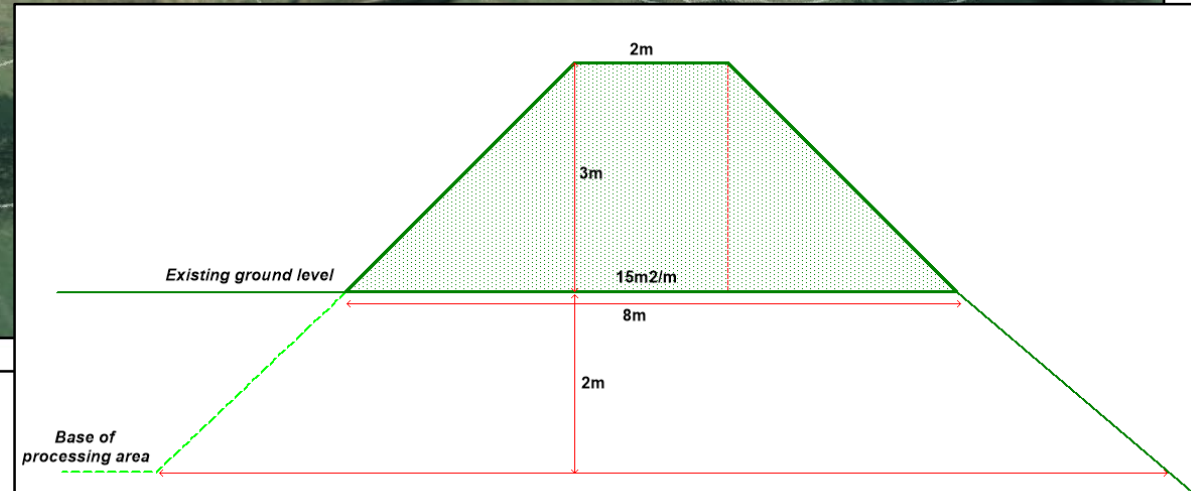
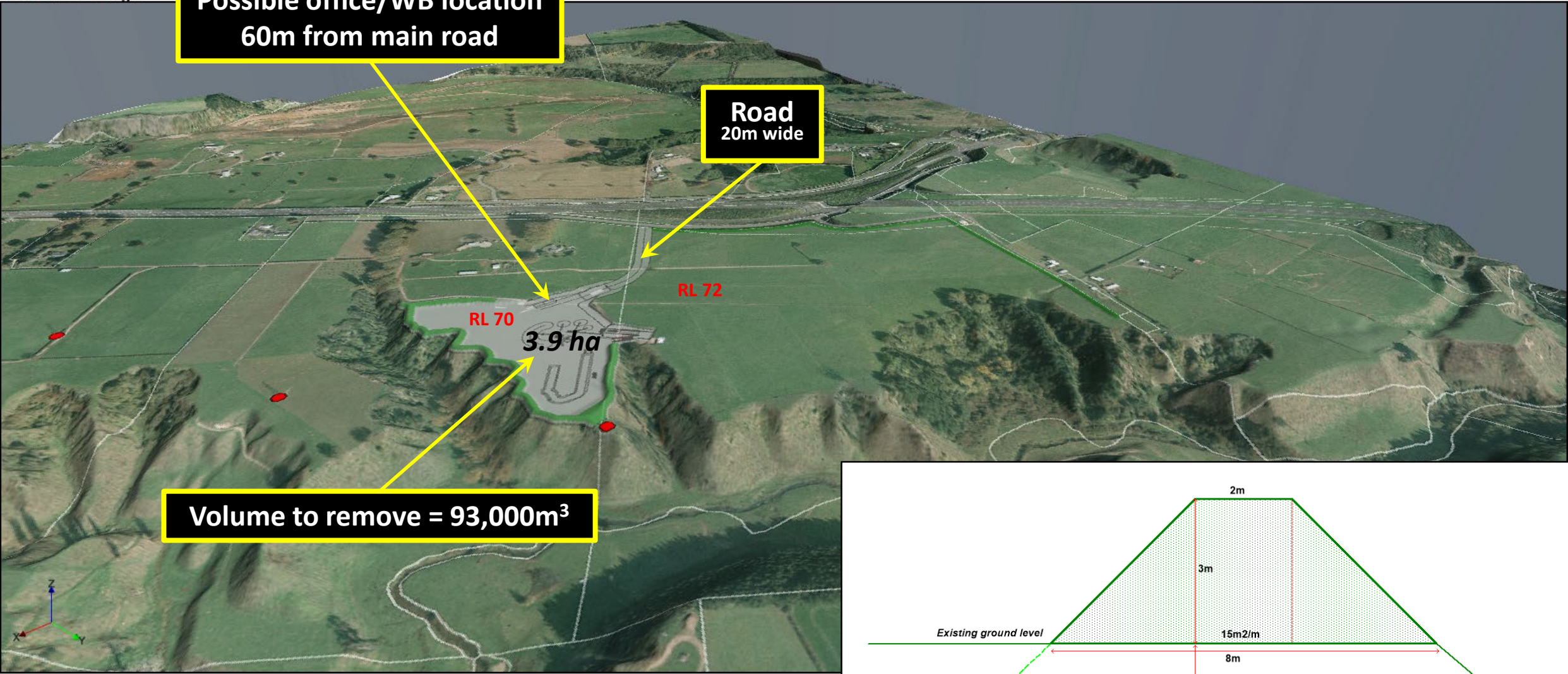
Processing area and bunds

2021 Year 1 image

**Possible office/WB location
60m from main road**

**Road
20m wide**

Volume to remove = 93,000m³

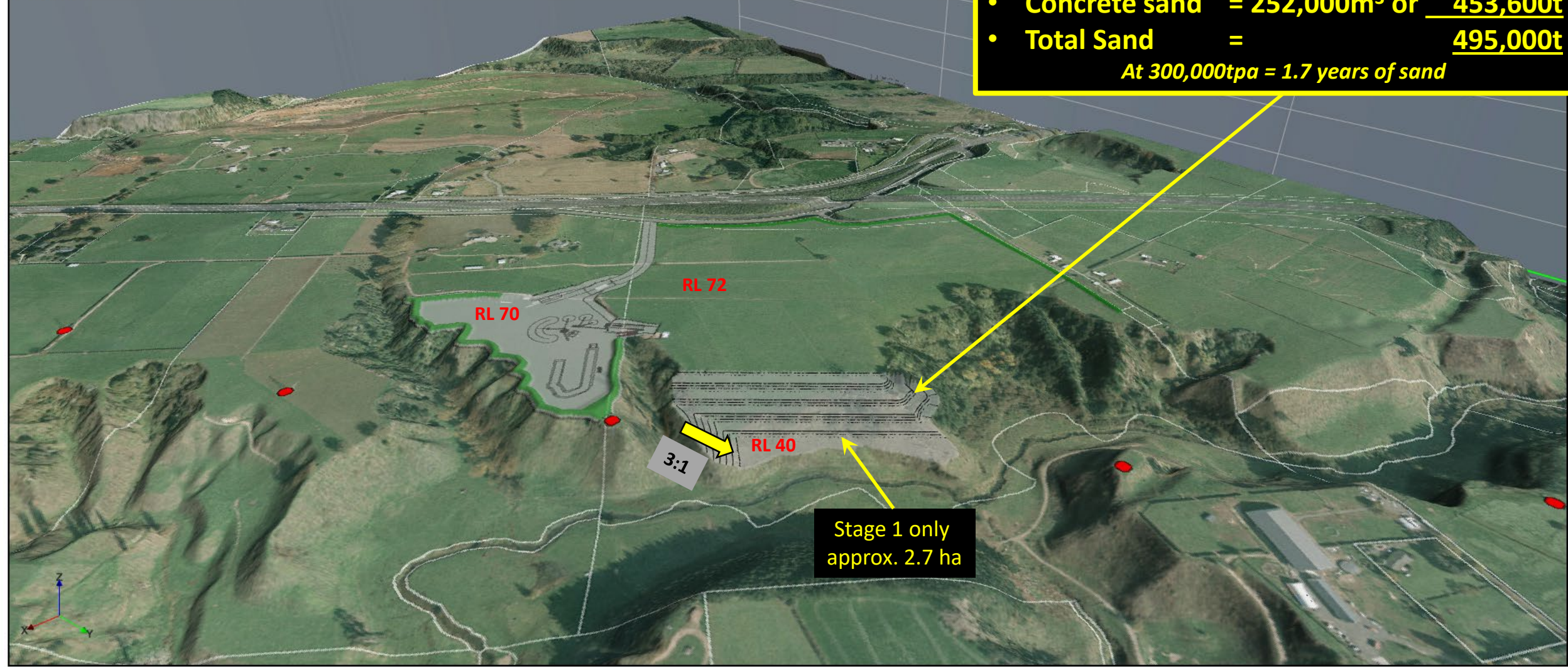


RS Sands – Quarry Planning

Stage 1 – Years 1 to 1.7

- **Overburden** = 23,000m³
- **Pit sand** = 23,000m³ or 41,4000t
- **Concrete sand** = 252,000m³ or 453,600t
- **Total Sand** = 495,000t
At 300,000tpa = 1.7 years of sand

2022 Year 1



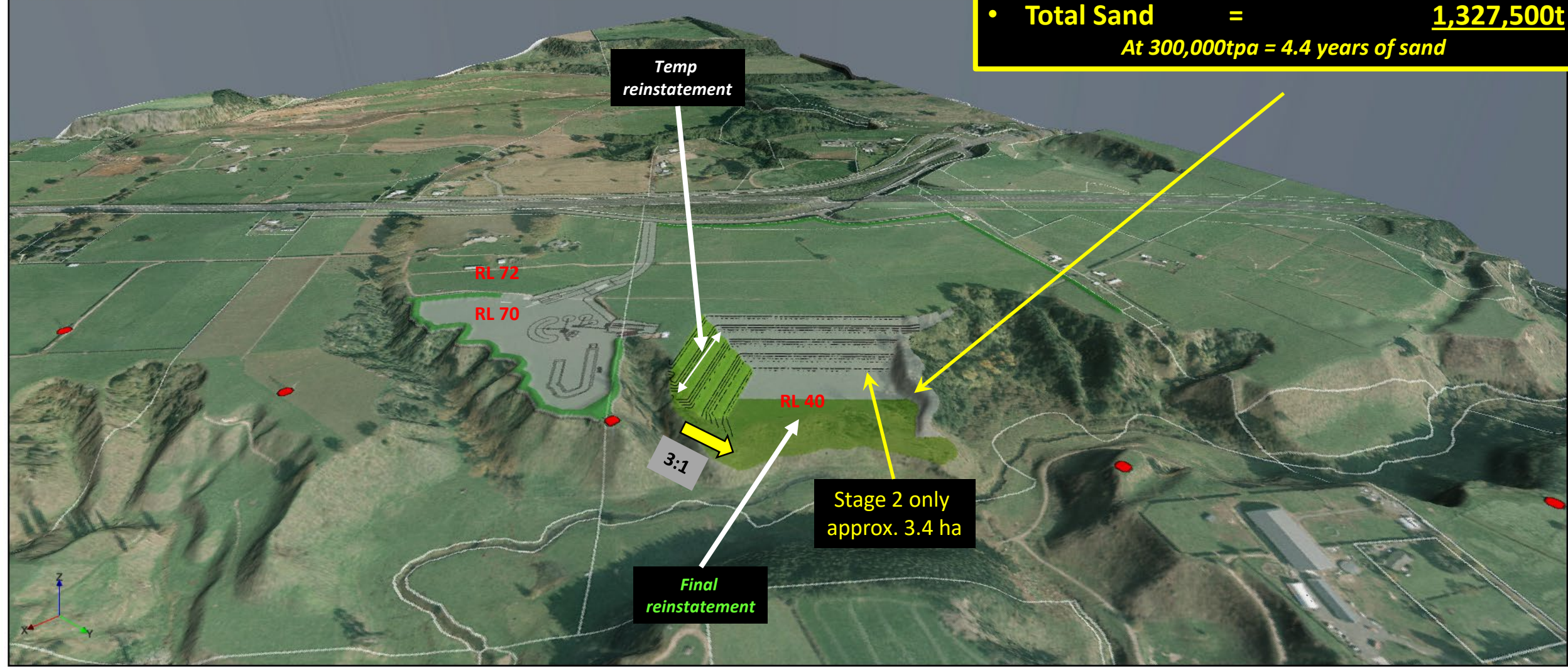
Viewpoint at the end of each stage – including reinstatement

RS Sands – Quarry Planning

Stage 2 – Years 1.7 to 6.1

- **Overburden** = 62,500m³
- **Pit sand** = 62,500m³ or 112,500t
- **Concrete sand** = 675,000m³ or 1,215,000t
- **Total Sand** = 1,327,500t
At 300,000tpa = 4.4 years of sand

2022 Year 2



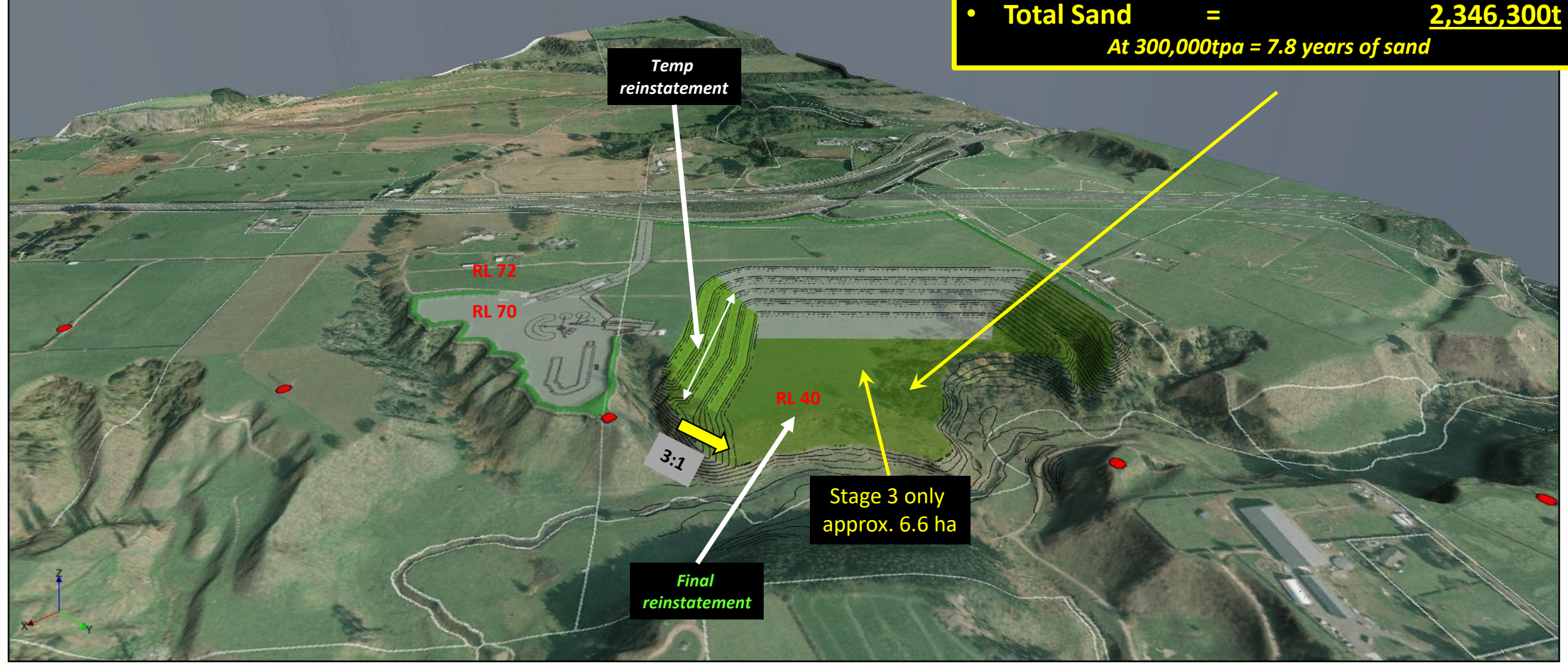
Viewpoint at the end of each stage – including reinstatement

RS Sands – Quarry Planning

Stage 3 – Years 6.1 to 13.9

- **Overburden** = 105,500m³
- **Pit sand** = 105,500m³ or 189,900t
- **Concrete sand** = 1,198,000m³ or 2,156,400t
- **Total Sand** = 2,346,300t
At 300,000tpa = 7.8 years of sand

2022 Year 3



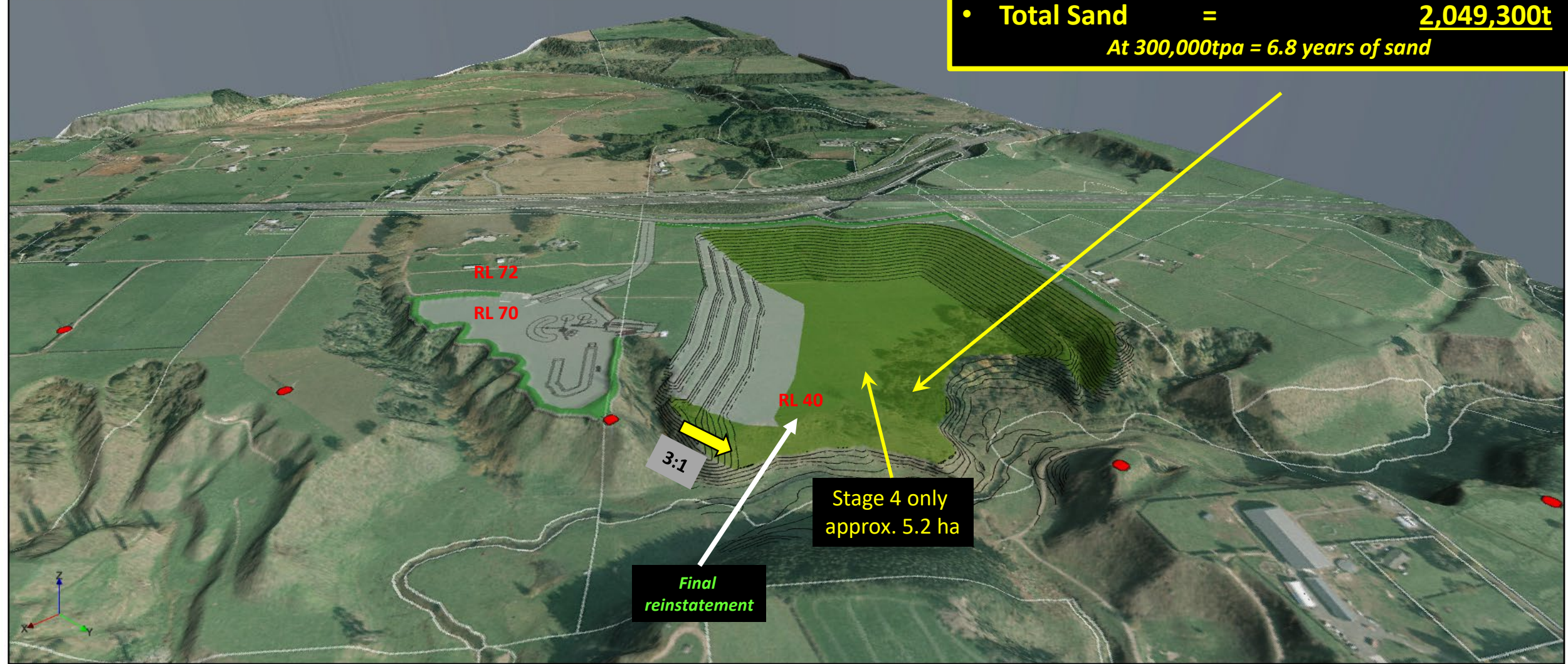
Viewpoint at the end of each stage – including reinstatement

RS Sands – Quarry Planning

Stage 4 – Years 13.9 to 20.7

- **Overburden** = 127,500m³
- **Pit sand** = 127,500m³ or 229,500t
- **Concrete sand** = 1,011,000m³ or 1,819,800t
- **Total Sand** = 2,049,300t
At 300,000tpa = 6.8 years of sand

2022 Year 4

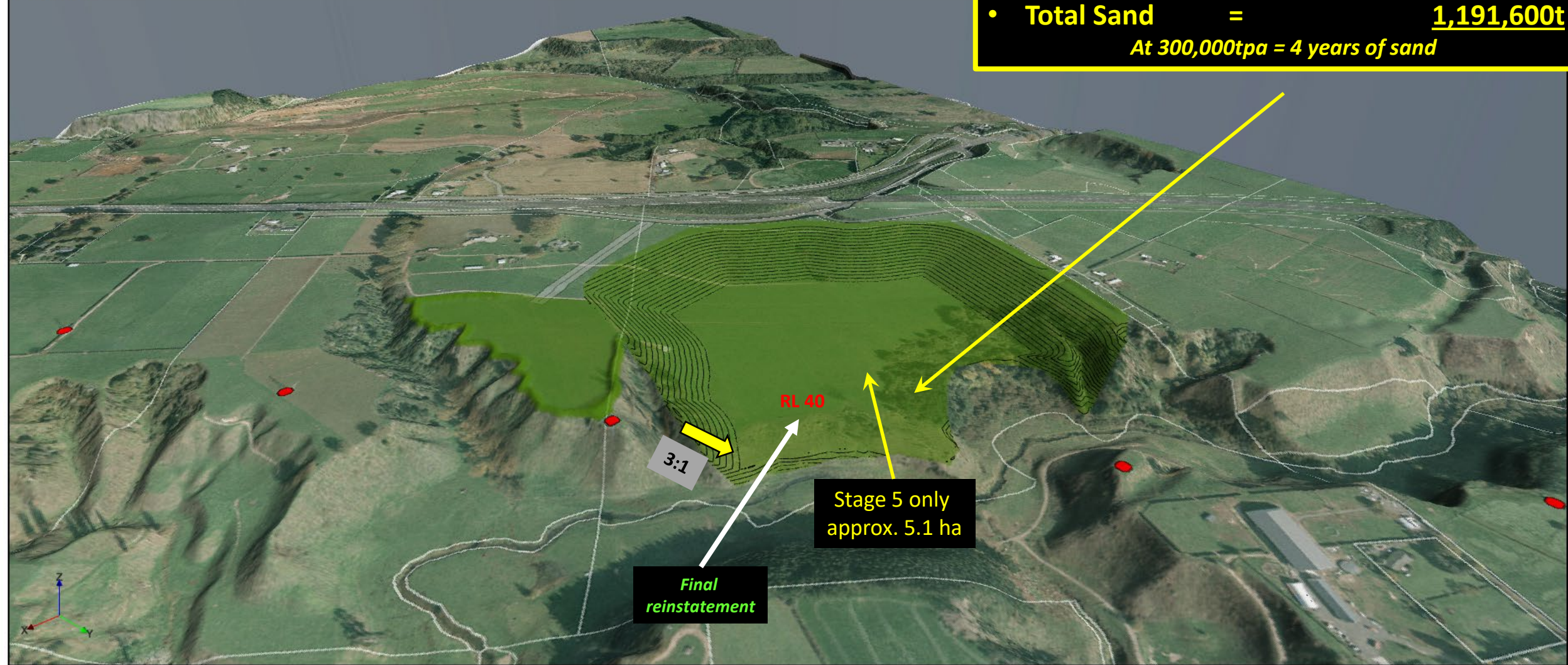


Viewpoint at the end of each stage – including reinstatement

RS Sands – Quarry Planning Stage 5 – Years 20.7 to 24.7

- **Overburden** = 73,000m³
- **Pit sand** = 73,000m³ or 131,400t
- **Concrete sand** = 589,000m³ or 1,060,200t
- **Total Sand** = 1,191,600t
At 300,000tpa = 4 years of sand

2022 Year 5



Viewpoint at the end of each stage – including reinstatement

Summary

| | m3 | | | t | | | years |
|------------------|------------------|----------|---------------|------------------|---------------|-----------|---------------------|
| | Overburden | Pit sand | Concrete Sand | Pit sand | Concrete Sand | Subtotal | |
| Stage 1 | 23,000 | 23,000 | 252,000 | 41,400 | 453,600 | 495,000 | <i>1.65</i> |
| Stage 2 | 62,500 | 62,500 | 675,000 | 112,500 | 1,215,000 | 1,327,500 | <i>4.43</i> |
| Stage 3 | 105,500 | 105,500 | 1,198,000 | 189,900 | 2,156,400 | 2,346,300 | <i>7.82</i> |
| Stage 4 | 127,500 | 127,500 | 1,011,000 | 229,500 | 1,819,800 | 2,049,300 | <i>6.83</i> |
| Stage 5 | 73,000 | 73,000 | 589,000 | 131,400 | 1,060,200 | 1,191,600 | <i>3.97</i> |
| Sub total | 391,500 | 391,500 | 3,725,000 | 704,700 | 6,705,000 | 7,409,700 | <i>24.70</i> |
| Totals | 4,508,000 | | | 7,409,700 | | | <i>24.70</i> |